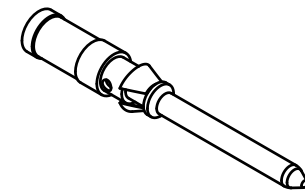
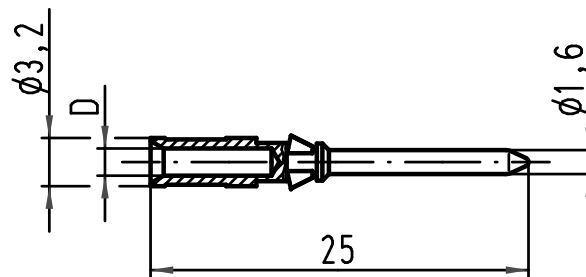
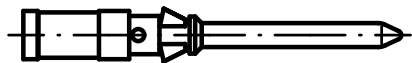


1 2 3 4 5 6

A

B



Bestell-Nummer / Part No.		D	Leiterquerschnitt wire gauge		Abisolierlänge der Litze stripping length
versilbert silver plated	vergoldet gold plated		mm <sup>2</sup>	AWG	
09 15 000 6104	09 15 000 6124	0,90	0,14-0,37	26-22	8
09 15 000 6103	09 15 000 6123	1,10	0,5	20	
09 15 000 6105	09 15 000 6125	1,30	0,75	18	
09 15 000 6102	09 15 000 6122	1,45	1	18	
09 15 000 6101	09 15 000 6121	1,75	1,5	16	
09 15 000 6106	09 15 000 6126	2,25	2,5	14	6

C

D



All Dimensions in mm  
Original Size DIN A 4

Techn. Character.

Nicht tolerierte Masse! Free size tolerances

	Dat.	Name	Masstab/Scale
Detail.	22.03.99	Kö	2:1
Insp.		SDT	
Stand.			

**Han D / R15 Stiftkontakt**  
Crimpkontakt gedreht 10A  
crimpcontact turned 10A

412766 07.03.07 Ho

HARTING Electric GmbH & Co. KG  
D-32339 Espelkamp



**TB 09 15 000 61..**

Blatt/ page

Bestell-Nr/Part No

Mod. Dat. Name

Sub. TB 09 15 000 6... v. 22.02.93