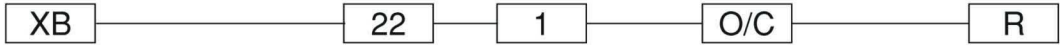
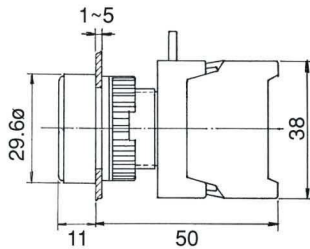


PUSH BUTTON SWITCHES, IP65

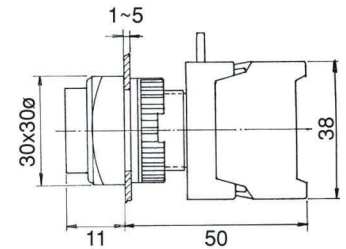


| Type | Mounting hole | No. of contact | Type of contact | Lens colour |
|---|----------------------|------------------|---|--|
| XB, GBF, PBF: Flat head XBL, GBL, PBL: Long head XBS: Square head XLS: Square long head XBG: Guard ring XGS: Guard ring square XE, EB, GEB, XES: Mushroom head 40ø BXE, BEB: Mushroom head 60ø LEB, GLEB: Latching head PF, EPF, GPF, GEPP: Push on-Push off | 22 : 22ø 30 : 30ø | 1 2 3 4 | O: N/O(a) C: N/C(b) O/C: N/O+N/C 1a+1b | <ul style="list-style-type: none"> ● R: Red ● G: Green ● Y: Yellow ● BL: Blue ● BK: Black ○ W: White |

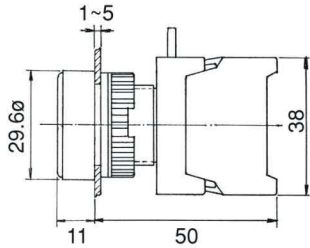
XB22-1/O



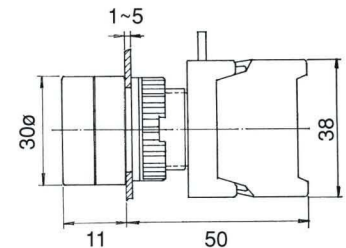
XLS22-1/O XLS22-10/C
XLS22-1/C



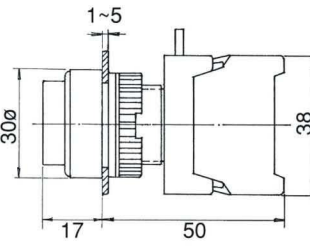
XB22-10/C



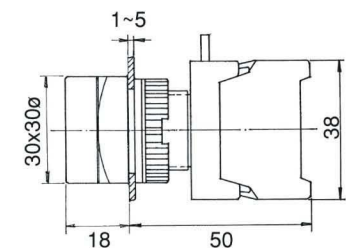
XBG22-1/O XBG22-10/C
XBG22-1/C



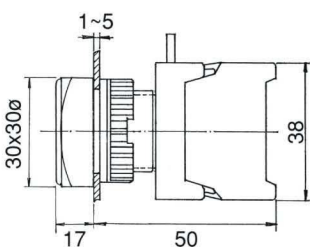
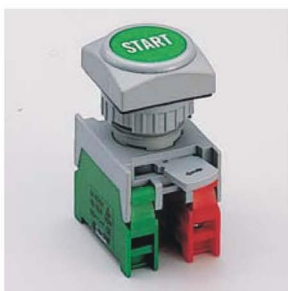
XBL22-1/O XBL22-10/C
XBL22-1/C



XGS22-1/O XGS22-10/C
XGS22-1/C



XBS22-1/O XBS22-10/C
XBS22-1/C



XE22-1/O XE22-10/C
XE22-1/C

