

1

2

3

4

5

6

7

FOR
客户名称APPROVED
客户确认签字ATTN
销售负责人

A

B

C

D

E

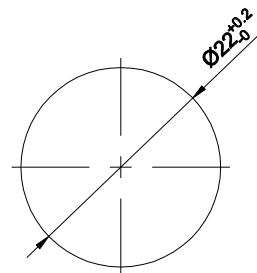
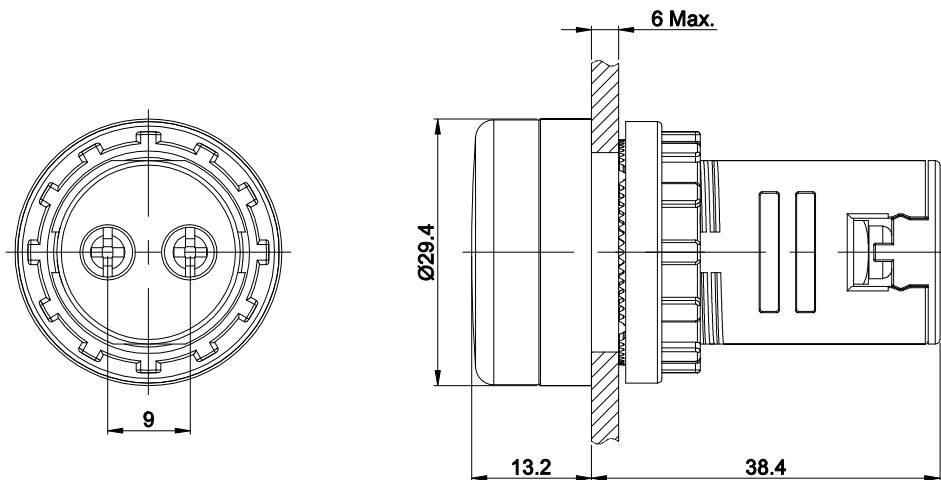
A

B

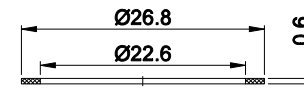
C

D

E



PANEL CUTOUT



SEAL RING

PART NUMBER:AD16-22DS/△/▲/※

"△"	CAP & LAMP COLOR
R	RED
G	GREEN
Y	YELLOW
B	BLUE
W	WHITE

"▲"	LAMP VOLTAGE (RESISTANCE DROPPING)
6V	AC/DC 6V
12V	AC/DC 12V
24V	AC/DC 24V
110VDC	AC/DC 110V
220VDC	AC/DC 220V
380VDC	AC/DC 380V

"▲"	LAMP VOLTAGE (CAPACITANCE DROPPING)
110V	AC 110V
220V	AC 220V
380V	AC 380V

"※"	PROTECTION DEGREE
NO LETTER	IP40
P	IP65

SPECIFICATIONS:

- OPERATING TEMPERATURE: -25°C~ +55°C, ELEVATION<2,000m.
- ELECTRICAL LIFE: ≥40,000 hours.
- PERMITTED VOLTAGE ±20%(≥110V).
- POWER-FREQUENCY WITHSTAND VOLTAGE: 1890kV(AC RMS),1min.
- USAGE FREQUENCY(AC): 50~60 Hz.
- RATED OPERATING CURRENT: ≤20mA.
- BRIGHTNESS: ≥100cd/m².
- COMPARATIVE TRACKING INDEX CTI≥100,FLAME RETARDANT.
- INSULATION RESISTANCE: U_i≤60V 5MΩ, 60V<U_i≤660V 50MΩ.
- FRONT FANEL PROTECTION DEGREE: IP40/IP65.
- TERMINAL TYPE: SCREW TYPE CONNECTION.
- GENERAL TOLERANCE:0-18mm=±0.25, 18-80mm=±0.52.
- COMPLIANT WITH RoHS.

MATERIALS:

- LAMP CAP: PS.
- BODY: PA.
- BASE: PA.

BRAND 品牌		红波按钮制造有限公司			
ONPOW 欧宝龙®		ONPOW PUSH BUTTON MANUFACTURE CO.,LTD.			
TITLE 名称	AD16 PILOT LAMP		UNIT 单位	mm	
DWG NO. 图号	AD16-22DS	SCALE 比例	1.2 : 1	SIZE 图纸	A4
FILE NAME 档案名称	AD16-22DS.DWG	DRAWN 制图	YDY 2025/01/17	SHEET 张	1/1
		REV. 版本	V1.0		

1

2

3

4

5

6

7