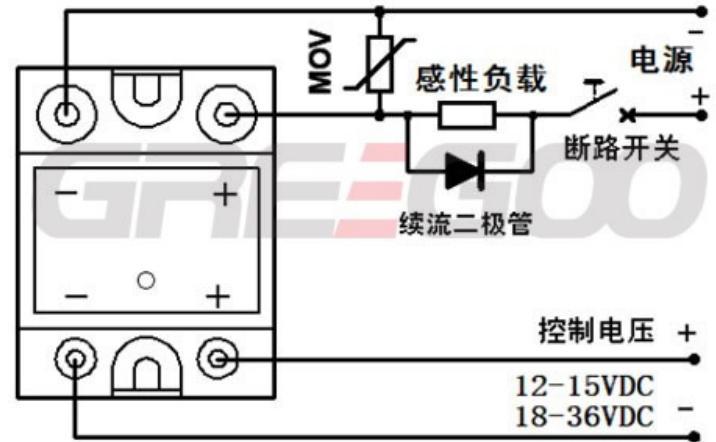
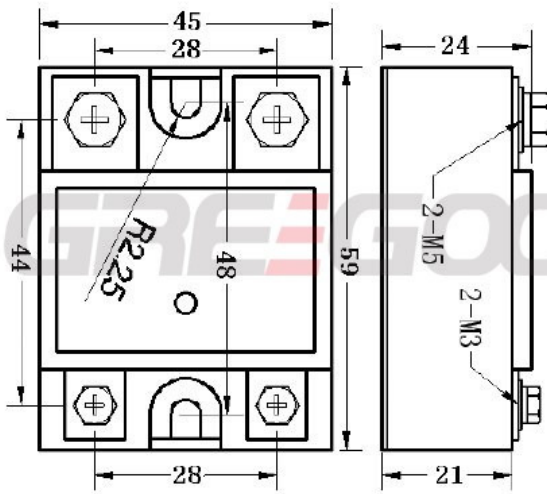


GRE-GOO



Product Details

10-200A DC to DC SSR

Electromagnetic coupling isolation between input and output circuits.

Control signal interface with PLC, TTL logic.

Light-emitting diode indicates operating status.

Built-in input undervoltage protection, output transient overvoltage absorption protection.

Solid non-contact output, fast switching speed, no spark and no arcing on and off.

Epoxy resin encapsulation, anti-corrosion, fire and shock resistance, stable and reliable switch work.

The product is mainly used in the new energy vehicles of high-power DC appliances non-contact switch. Such as PTC DC heater, battery charging and discharging, DC motor, solenoid valve and other switching switches.

MODEL	RATED CURRENT	VOLTAGE RANGE	CONTROL	CASING
DC TO DC				
GDZ02-10100ZD3	10A	100VDC	4-32VDC	J-7
GDZ02-20100ZD3	20A	100VDC	4-32VDC	J-7
GDZ02-30100ZD3	30A	100VDC	4-32VDC	J-7
GDZ02-40100ZD3	40A	100VDC	4-32VDC	J-7
GDZ02-50100ZD3	50A	100VDC	4-32VDC	J-7
GDZ02-60100ZD3	60A	100VDC	4-32VDC	J-7
GDZ02-80100ZD3	80A	100VDC	4-32VDC	J-7
GDZ02-100100ZD3	100A	100VDC	4-32VDC	J-7
GDZ02-120100ZD3	120A	100VDC	4-32VDC	J-7
GDZ02-150100ZD3	150A	100VDC	4-32VDC	J-7
GDZ02-180100ZD3	180A	100VDC	4-32VDC	J-7
GDZ02-200100ZD3	200A	100VDC	4-32VDC	J-7
GDZ02-10200ZD3	10A	200VDC	4-32VDC	J-7
GDZ02-20200ZD3	20A	200VDC	4-32VDC	J-7
GDZ02-30200ZD3	30A	200VDC	4-32VDC	J-7
GDZ02-40200ZD3	40A	200VDC	4-32VDC	J-7
GDZ02-50200ZD3	50A	200VDC	4-32VDC	J-7
GDZ02-60200ZD3	60A	200VDC	4-32VDC	J-7
GDZ02-80200ZD3	80A	200VDC	4-32VDC	J-7
GDZ02-100200ZD3	100A	200VDC	4-32VDC	J-7
GDZ02-120200ZD3	120A	200VDC	4-32VDC	J-7
GDZ02-150200ZD3	150A	200VDC	4-32VDC	J-7
GDZ02-180200ZD3	180A	200VDC	4-32VDC	J-7
GDZ02-10400ZD3	10A	400VDC	4-32VDC	J-7
GDZ02-20400ZD3	20A	400VDC	4-32VDC	J-7
GDZ02-30400ZD3	30A	400VDC	4-32VDC	J-7
GDZ02-40400ZD3	40A	400VDC	4-32VDC	J-7
GDZ02-50400ZD3	50A	400VDC	4-32VDC	J-7
GDZ02-60400ZD3	60A	400VDC	4-32VDC	J-7
GDZ02-80400ZD3	80A	400VDC	4-32VDC	J-7
GDZ02-100400ZD3	100A	400VDC	4-32VDC	J-7
GDZ02-120400ZD3	120A	400VDC	4-32VDC	J-7
GDZ02-150400ZD3	150A	400VDC	4-32VDC	J-7
GDZ02-180400ZD3	180A	400VDC	4-32VDC	J-7

GDZ02-10600ZD3	10A	600VDC	4-32VDC	J-7
GDZ02-20600ZD3	20A	600VDC	4-32VDC	J-7
GDZ02-30600ZD3	30A	600VDC	4-32VDC	J-7
GDZ02-40600ZD3	40A	600VDC	4-32VDC	J-7
GDZ02-50600ZD3	50A	600VDC	4-32VDC	J-7
GDZ02-60600ZD3	60A	600VDC	4-32VDC	J-7
GDZ02-80600ZD3	80A	600VDC	4-32VDC	J-7
GDZ02-100600ZD3	100A	600VDC	4-32VDC	J-7
GDZ02-120600ZD3	120A	600VDC	4-32VDC	J-7
GDZ02-150600ZD3	150A	600VDC	4-32VDC	J-7
GDZ02-180600ZD3	180A	600VDC	4-32VDC	J-7
GDZ02-101200ZD3	10A	1200VDC	4-32VDC	J-7
GDZ02-201200ZD3	20A	1200VDC	4-32VDC	J-7
GDZ02-301200ZD3	30A	1200VDC	4-32VDC	J-7
GDZ02-401200ZD3	40A	1200VDC	4-32VDC	J-7
GDZ02-501200ZD3	50A	1200VDC	4-32VDC	J-7
GDZ02-601200ZD3	60A	1200VDC	4-32VDC	J-7
GDZ02-801200ZD3	80A	1200VDC	4-32VDC	J-7
GDZ02-1001200ZD3	100A	1200VDC	4-32VDC	J-7
GDZ02-1201200ZD3	120A	1200VDC	4-32VDC	J-7
GDZ02-1501200ZD3	150A	1200VDC	4-32VDC	J-7
GDZ02-1801200ZD3	180A	1200VDC	4-32VDC	J-7
AC TO DC				
GDZ02-10100ZA2	10A	100VDC	130-240VAC	J-7
GDZ02-20100ZA2	20A	100VDC	130-240VAC	J-7
GDZ02-30100ZA2	30A	100VDC	130-240VAC	J-7
GDZ02-40100ZA2	40A	100VDC	130-240VAC	J-7
GDZ02-50100ZA2	50A	100VDC	130-240VAC	J-7
GDZ02-60100ZA2	60A	100VDC	130-240VAC	J-7
GDZ02-80100ZA2	80A	100VDC	130-240VAC	J-7
GDZ02-100100ZA2	100A	100VDC	130-240VAC	J-7
GDZ02-120100ZA2	120A	100VDC	130-240VAC	J-7
GDZ02-150100ZA2	150A	100VDC	130-240VAC	J-7
GDZ02-180100ZA2	180A	100VDC	130-240VAC	J-7
GDZ02-200100ZA2	200A	100VDC	130-240VAC	J-7
GDZ02-10200ZA2	10A	200VDC	130-240VAC	J-7
GDZ02-20200ZA2	20A	200VDC	130-240VAC	J-7
GDZ02-30200ZA2	30A	200VDC	130-240VAC	J-7
GDZ02-40200ZA2	40A	200VDC	130-240VAC	J-7
GDZ02-50200ZA2	50A	200VDC	130-240VAC	J-7

GDZ02-60200ZA2	60A	200VDC	130-240VAC	J-7
GDZ02-80200ZA2	80A	200VDC	130-240VAC	J-7
GDZ02-100200ZA2	100A	200VDC	130-240VAC	J-7
GDZ02-120200ZA2	120A	200VDC	130-240VAC	J-7
GDZ02-150200ZA2	150A	200VDC	130-240VAC	J-7
GDZ02-180200ZA2	180A	200VDC	130-240VAC	J-7
GDZ02-10400ZA2	10A	400VDC	130-240VAC	J-7
GDZ02-20400ZA2	20A	400VDC	130-240VAC	J-7
GDZ02-30400ZA2	30A	400VDC	130-240VAC	J-7
GDZ02-40400ZA2	40A	400VDC	130-240VAC	J-7
GDZ02-50400ZA2	50A	400VDC	130-240VAC	J-7
GDZ02-60400ZA2	60A	400VDC	130-240VAC	J-7
GDZ02-80400ZA2	80A	400VDC	130-240VAC	J-7
GDZ02-100400ZA2	100A	400VDC	130-240VAC	J-7
GDZ02-120400ZA2	120A	400VDC	130-240VAC	J-7
GDZ02-150400ZA2	150A	400VDC	130-240VAC	J-7
GDZ02-180400ZA2	180A	400VDC	130-240VAC	J-7
GDZ02-10600ZA2	10A	600VDC	130-240VAC	J-7
GDZ02-20600ZA2	20A	600VDC	130-240VAC	J-7
GDZ02-30600ZA2	30A	600VDC	130-240VAC	J-7
GDZ02-40600ZA2	40A	600VDC	130-240VAC	J-7
GDZ02-50600ZA2	50A	600VDC	130-240VAC	J-7
GDZ02-60600ZA2	60A	600VDC	130-240VAC	J-7
GDZ02-80600ZA2	80A	600VDC	130-240VAC	J-7
GDZ02-100600ZA2	100A	600VDC	130-240VAC	J-7
GDZ02-120600ZA2	120A	600VDC	130-240VAC	J-7
GDZ02-150600ZA2	150A	600VDC	130-240VAC	J-7
GDZ02-180600ZA2	180A	600VDC	130-240VAC	J-7
GDZ02-101200ZA2	10A	1200VDC	130-240VAC	J-7
GDZ02-201200ZA2	20A	1200VDC	130-240VAC	J-7
GDZ02-301200ZA2	30A	1200VDC	130-240VAC	J-7
GDZ02-401200ZA2	40A	1200VDC	130-240VAC	J-7
GDZ02-501200ZA2	50A	1200VDC	130-240VAC	J-7
GDZ02-601200ZA2	60A	1200VDC	130-240VAC	J-7
GDZ02-801200ZA2	80A	1200VDC	130-240VAC	J-7
GDZ02-1001200ZA2	100A	1200VDC	130-240VAC	J-7
GDZ02-1201200ZA2	120A	1200VDC	130-240VAC	J-7
GDZ02-1501200ZA2	150A	1200VDC	130-240VAC	J-7
GDZ02-1801200ZA2	180A	1200VDC	130-240VAC	J-7

Note: Control voltage 9-72vdc , Normal Close type SSR, Over-current protection can be custom-made to meet your demand.

Input	Control power	3 ~32 VDC	12 ~15 VDC	18 ~36 VDC	
	Control current	8 ~20 mA	30 ~80 mA	25 ~ 70 mA	
	Undervoltage protection	no	<10VDC self-locking	<16VDC self-locking	
	On-off time	≤8mS	≤1mS	≤1mS	
	Working Instruction	LED			
Output	Maximum output voltage	100VDC	200VDC	600VDC	1200VDC
	Max. load current	10, 20, 30, 60, 80, 100 200 A			
	On-state voltage drop	≤0.5 ~ 4.6 V			
	Off-statevoltage	≥100V	≥200V	≥600V	≥1200V
	Overtoltage protection	Transient protection voltage are: 80V, 180V, 470V, 1000V			
	Switching Characteristics	MOS or IGBT-solid-state non-contact switching characteristics			
Performance	Isolation voltage	≥ 1800~2500 V			
	Insulation voltage	≥ 2000~2500 V			
	Operating Temperature	-25~75°C			
	Insulation resistance	≥ 100 MΩ			
	Heat dissipation conditions	More than 20A, equipped with heatsink only; more than 80A, equipped with heat sink and fan for strong cooling			
	Safety factor of load current	2.5-3 times for resistive load, 3-6 times for inductive load			
	Dimension	59×45×24 mm			

Selection Guide:

A margin should be left when selecting the voltage and current of the product. For resistive load: the current is selected according to 2.5~4 times the load current, and the voltage is selected according to 2~2.5 times the load power. Inductive load: current is selected according to 3-7 times load current, voltage is selected according to 2.5-3 times load voltage.

According to the relationship between load current and ambient temperature, when the ambient temperature is high or heat dissipation conditions are not good, the current capacity of the solid state relay should be increased accordingly.