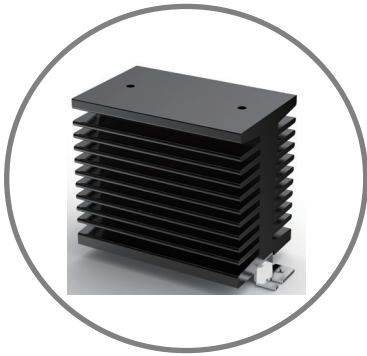


### Heat sink [Radiator] Series



### Features

- Use high-quality bone material, through anodic oxidation, so that the effect of aluminum alloy is better
- Optional ceiling accessories
- Optional fan attachment
- Solve customer customization
- With international standard DIN35mm bracket, it is more convenient to install

### Ordering Options

GSH

GSH Heat sink series

7

Product serial number

D

D: DIN Rail

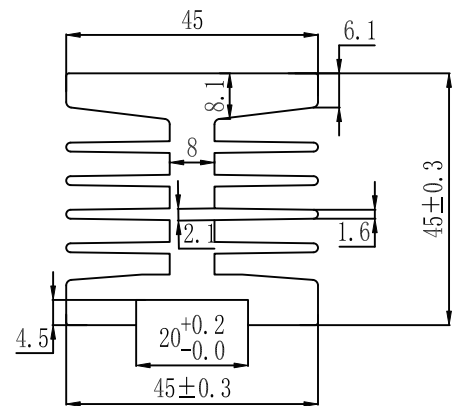
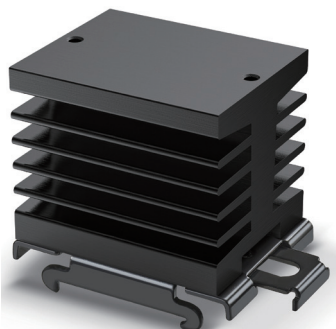
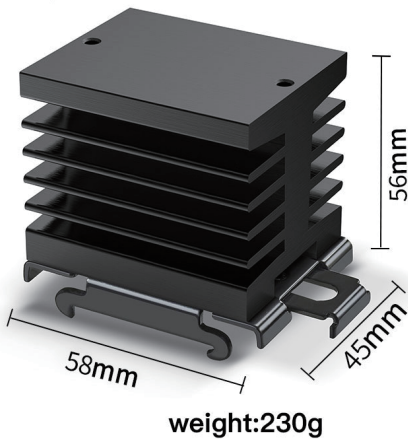
F

F: Fan

- The radiator is an accessory of the solid state relay, mainly for conduction, absorption and radiating the heat of the solid state relay.
- The user selects the radiator and solid state relay according to the output current of the selected solid state relay and the environmental conditions.

### Dimensions

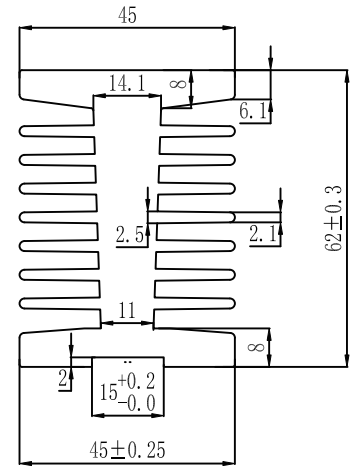
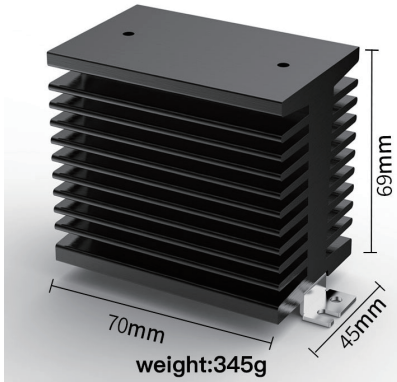
#### GHS-6 [DIN35]



## Heat sink [Radiator] Series

### Dimensions

GHS-7 [DIN35]



GHS-8 [DIN35]

