

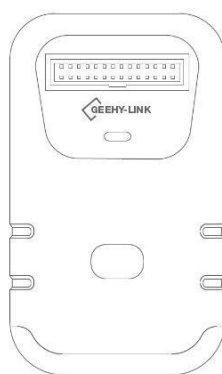
User Manual

GEEHY-LINK

Version: V1.1

1. Overview

GEEHY-LINK is an all-in-one emulator and programmer for online debugging and emulation of APM32 full series MCUs under Keil IDE. It supports full-speed operation, single-step debugging, breakpoint setting, and other debugging methods.



2. Performance

- Support Windows7/8/10 without drives
- Support APM32 full series MCU programming
- Support both SWD and JTAG programming
- Power target board via a control button
- High-speed USB provides a power supply

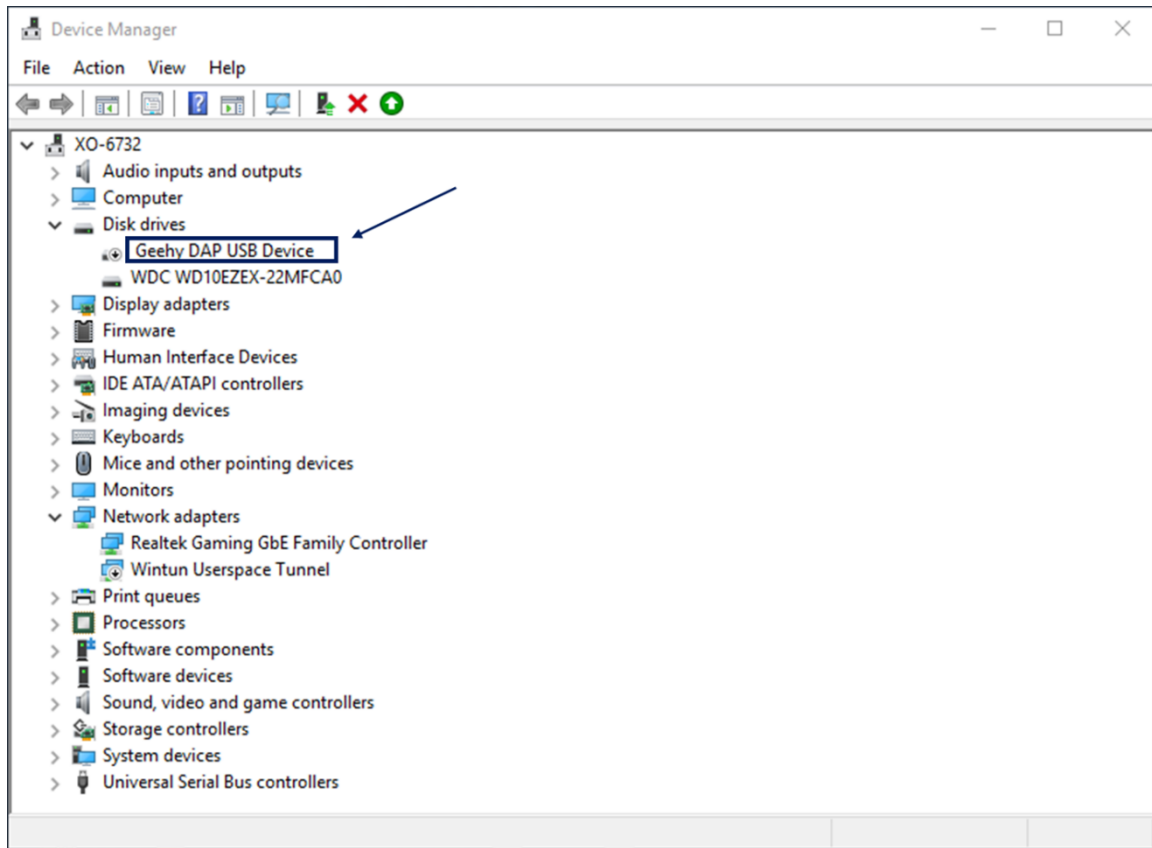
3. Electrical Parameters

- Input voltage:5V Input current \geq 500mA
- Output voltage:3.3V Output current \leq 350mA

4. Instruction

- 1) Connect GEEHY-LINK to the computer with a USB cable and the Device Manager


will appear on Geehy DAP USB Device as shown in Figure 1:

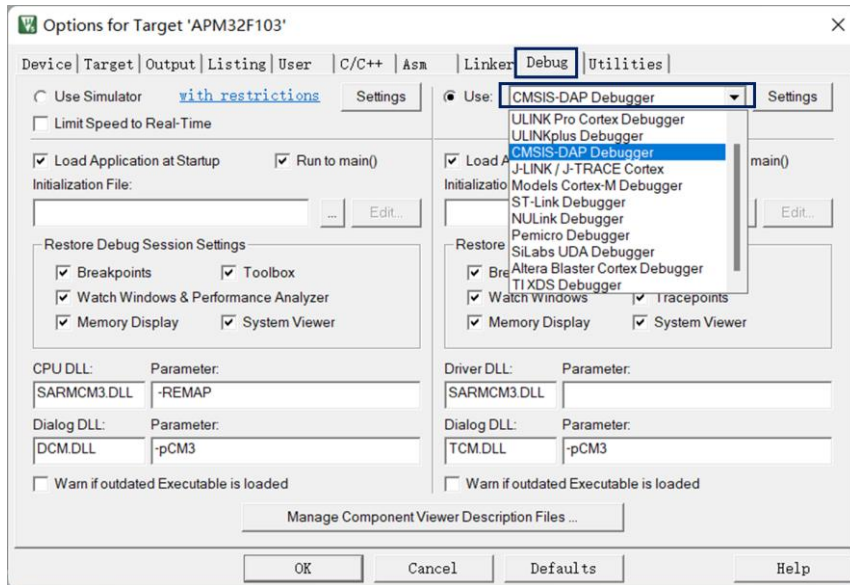


(Figure 1)

2) The power supply of the target board can be controlled by the keys on the tool. The tool is not powered in the default state. Press and hold the button for 3s, the red light will be on to power the target board; Press and hold the button again for 3s, the red light will be off to stop the power supply.

3) Choose to use SWD or JTAG on keil.

a) Click “Debug” on the “Options for Target”  , interface and then select “CMSIS-DAP Debugger” as shown in Figure 2:



(Figure 2)

b) Click “Settings” to select mode(SWD or JTAG) and frequency, as shown in Figures 3 and 4:

A : Emulator name

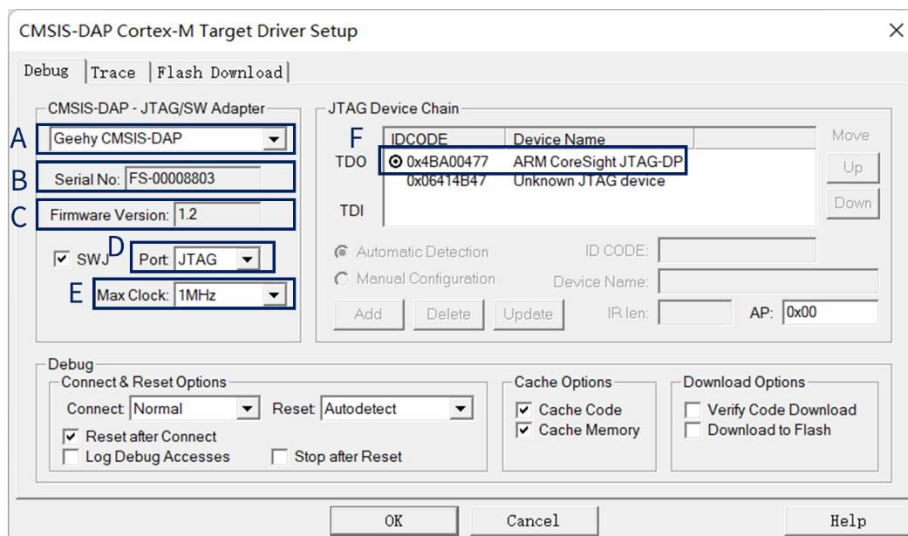
B : Emulator serial number

C : Emulator firmware version

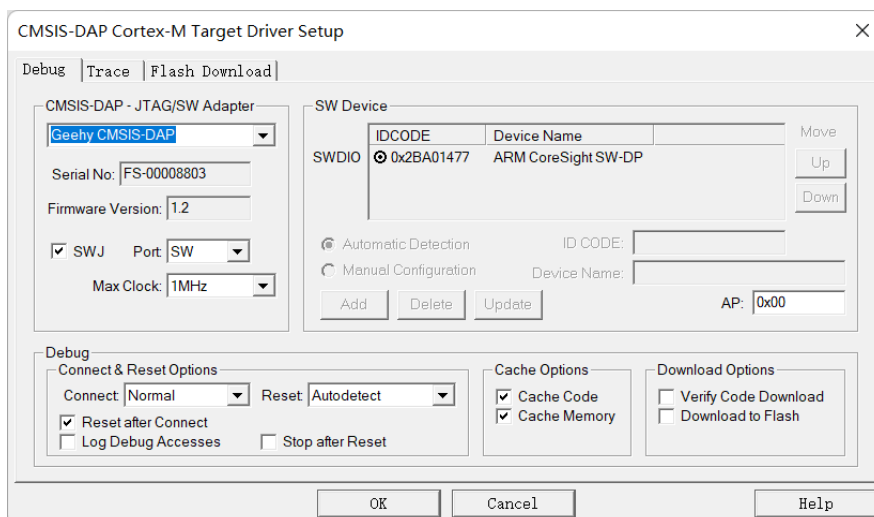
D : SWD and JTAG selection (only keil version V5.22 or above supports JTAG)

E : Maximum frequency: 10M

F : IDCODE is displayed after a successful connection to the target board.

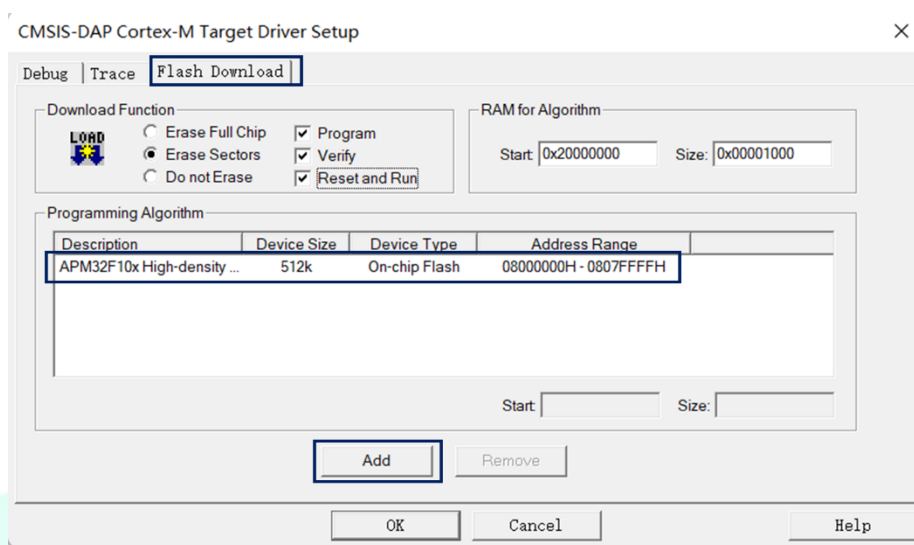


(Figure 3)



(Figure 4)

- 4) Enter the “Flash Download” interface and select “Programming Algorithm”. Click the “Add” button and add the corresponding Flash, as shown in Figure 5.



(Figure 5)