

GQ12-C

12mm Latching Type Metal Pushbutton Switch



Product Description

GQ12-C series is Latching Type Product which is developed on the basis of GQ12-A.
 And all the electrical properties of GQ12-C are the same as GQ12-A series except the following items
 Switch Rating: 1A/36V
 LED Voltage: Red&Yellow&Orange AC/DC 1.8V
 Green&Blue&White 2.8V
 all the Voltage need to connect an outer resistor.

Related parameters

Terminal Type	Pin Terminal(2.8×0.5mm)	Material of Actuator	Stainless Steel
Switching:	x(double-break and slow-motion contact)	The Crust Material	Stainless Steel
Panel Thickness	1~10mm	Material of Base	PA66
Torque	About 0.6Nm	Operation Pressure	About 3.5N
Mechanical Life	More than 200,000 cycles	Operation Travel	About 2.5mm
Electrical Life	More than 50,000 cycles		

Part-number Description

GQ12-C	★	-	□	Z	◇	/	J	/	△	/	▲	/	◎
Code of series	The Front Shape	Contact Structure	Operation Type	Lamp Type	Terminal Type	LED color	LED voltage	The Crust Material					
	H Flat head +High button	10 1NO	Z Latching If you need Momentary Type, pls choose GQ12-A series.	E Ring No letter means no lamp	J Pin Terminal	R Red G Green Y Yellow O Orange B Blue W White	(white and yellow LED only used for DC) AC/DC 6V AC/DC 12V AC/DC 24V AC/DC 36V Other voltage can be made to order and all the Voltage need to connect an outer resistor.	S Stainless Steel Other Material can be made to order.					

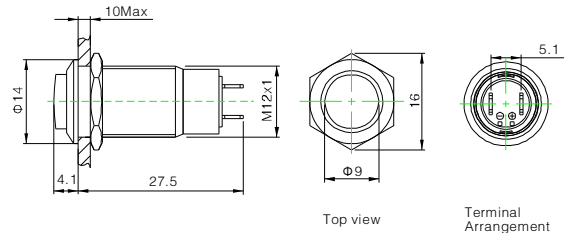
Note: Pls read the catalogue carefully, and choose the right part-number according to the sign.

GQ12-CH-10Z/J/S

Stainless Steel



- ⊙ Diameter: Φ12mm
- ⊙ Switch Rating: 1A/36V
- ⊙ Contact Configuration: 1NO
- ⊙ Operation Type: Latching(Z)
- ⊙ The Crust Material: Stainless steel
- ⊙ IP Degree: IP40
- ⊙ Terminal Type: Pin Terminal(2.8×0.5mm)



GQ12-CH-10ZE/J/Δ/▲/S

Stainless Steel



- ⊙ Diameter: Φ12mm
- ⊙ Switch Rating: 1A/36V
- ⊙ Contact Configuration: 1NO
- ⊙ Operation Type: Latching(Z)
- ⊙ Lamp Type: Ring
- ⊙ LED color(Δ): R G Y O B W
- ⊙ LED voltage(▲): 6V/12V/24V/36V
- ⊙ The Crust Material: Stainless steel
- ⊙ IP Degree: IP40
- ⊙ Terminal Type: Pin Terminal(2.8×0.5mm)

