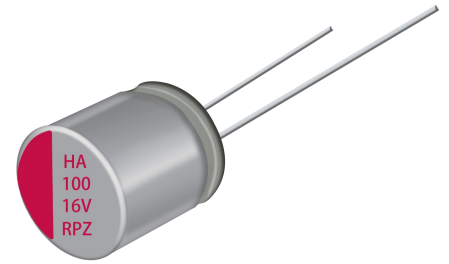


RPZ Series 引线式导电聚合物固体铝电解电容器极低 ESR 品 Extra Low ESR . Conductive Polymer . Radial Lead Type

- 105℃、2000 小时 105℃、2000 hours
- 性能稳定，可靠性高 High stability and reliability
- 极低 ESR、耐大纹波电流 Extra Low ESR、High ripple current capability

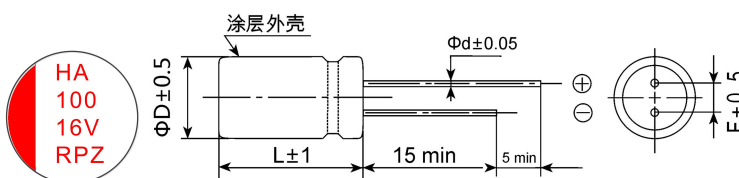


主要技术性能 Specifications

项目 Items	主要特性 Performance Characteristics								
使用温度范围 Operating Temperature Range	-55~+105℃								
额定电压范围 Rated Voltage Range	2.5~25V. DC								
标称容量允许偏差 Capacitance Tolerance	±20% (120Hz, 20℃)								
漏电流(20℃) Leakage Current	施加额定工作电压 2 分钟, $I \leq 0.2 C_R U_R$ (μA) After 2 minutes' application of rated voltage, the leakage current is not more than $0.2 C_R U_R$								
损耗角正切值(120Hz 20℃) Dissipation Factor	测试频率 120Hz/温度 20℃, 损耗小于规范值 Less than the specified value at 120Hz, 20℃								
等效串联电阻 Equivalent Series Resistance	测试频率 100KHz/温度 20℃, 等效串联电阻小于规范值 Less than the specified value at 100KHz, 20℃								
耐久性 Load Life(105℃,2000hrs)	在 105℃ 环境施加额定工作电压 2000 小时后,电容器的特性符合下表要求。 After 2000 hours' application of rated voltage at +105℃, capacitors meet the characteristics requirements listed .								
	<table border="1"> <tr> <td>电容量变化率 Capacitance Change</td> <td>初始值的±20%以内 Within ±20% of the initial value</td> </tr> <tr> <td>漏电流值 Leakage</td> <td>≤规范值 Less than the specified value</td> </tr> <tr> <td>损耗角正切值 Dissipation Factor</td> <td>≤规范值的 150% Less than 150% of the specified value</td> </tr> <tr> <td>等效串联电阻 Equivalent Series Resistance</td> <td>≤规范值的 150% Less than 150% of the specified value</td> </tr> </table>	电容量变化率 Capacitance Change	初始值的±20%以内 Within ±20% of the initial value	漏电流值 Leakage	≤规范值 Less than the specified value	损耗角正切值 Dissipation Factor	≤规范值的 150% Less than 150% of the specified value	等效串联电阻 Equivalent Series Resistance	≤规范值的 150% Less than 150% of the specified value
	电容量变化率 Capacitance Change	初始值的±20%以内 Within ±20% of the initial value							
	漏电流值 Leakage	≤规范值 Less than the specified value							
	损耗角正切值 Dissipation Factor	≤规范值的 150% Less than 150% of the specified value							
等效串联电阻 Equivalent Series Resistance	≤规范值的 150% Less than 150% of the specified value								
耐湿温特性 Damp heat(Steady state) (60℃,90~95%RH,1000hrs)	在温度为 60℃、湿度为 90~95%RH 的环境中, 1000 小时后,电容器的特性符合下表要求。 60℃, 90 to 95%RH,1000h,No applied voltage capacitors meet the characteristics requirements listed .								
<table border="1"> <tr> <td>电容量变化率 Capacitance Change</td> <td>初始值的±20%以内 Within ±20% of the initial value</td> </tr> <tr> <td>漏电流值 Leakage</td> <td>≤规范值 Less than the specified value</td> </tr> <tr> <td>损耗角正切值 Dissipation Factor</td> <td>≤规范值的 150% Less than 150% of the specified value</td> </tr> <tr> <td>等效串联电阻 Equivalent Series Resistance</td> <td>≤规范值的 150% Less than 150% of the specified value</td> </tr> </table>	电容量变化率 Capacitance Change	初始值的±20%以内 Within ±20% of the initial value	漏电流值 Leakage	≤规范值 Less than the specified value	损耗角正切值 Dissipation Factor	≤规范值的 150% Less than 150% of the specified value	等效串联电阻 Equivalent Series Resistance	≤规范值的 150% Less than 150% of the specified value	
电容量变化率 Capacitance Change	初始值的±20%以内 Within ±20% of the initial value								
漏电流值 Leakage	≤规范值 Less than the specified value								
损耗角正切值 Dissipation Factor	≤规范值的 150% Less than 150% of the specified value								
等效串联电阻 Equivalent Series Resistance	≤规范值的 150% Less than 150% of the specified value								

外形图及尺寸 Case size table

mm



ΦD×L	ΦD	L	F	Φd
5×6	5	6	2.0	0.5
5×7	5	7	2.0	0.5
5×8	5	8	2.0	0.5
6.3×5	6.3	5	2.5	0.5
6.3×8	6.3	8	2.5	0.5/0.6
6.3×9	6.3	9	2.5	0.5/0.6
8×8	8	8	3.5	0.6
8×12	8	12	3.5	0.6
10×12	10	12	5.0	0.6

RPZ Series

■ 编码和规格 Part number & Specifications

额定电压 Rated Voltage (V)	标称容量 Capacitance (μ F)	产品编码 Part Number	等效串联电阻 ESR(m Ω max) 100Khz to 300Khz	耐纹波电流 (mA rms/ 105 $^{\circ}$ C, 100Khz)	损耗 Tan δ (120Hz)	漏电流 (max) (μ A)	尺寸 Φ D \times L (mm)
2.5	220	RPZ0E221M0506	25	3500	0.12	110	5 \times 6
	330	RPZ0E331M0507	12	4310	0.12	165	5 \times 7
	390	RPZ0E391M0507	12	4310	0.12	195	5 \times 7
	470	RPZ0E471M0508	10	4610	0.12	235	5 \times 8
	560	RPZ0E561M0508	10	4610	0.12	280	5 \times 8
	560	RPZ0E561M0608	7	5000	0.12	280	6.3 \times 8
	680	RPZ0E681M0608	7	5000	0.12	340	6.3 \times 8
	820	RPZ0E821M0608	7	5000	0.12	410	6.3 \times 8
	820	RPZ0E821M0808	7	6100	0.12	410	8 \times 8
	1000	RPZ0E102M0808	7	6100	0.12	500	8 \times 8
	1500	RPZ0E152M0812	7	6100	0.12	750	8 \times 12
	1500	RPZ0E152M1012	7	6640	0.12	750	10 \times 12
	2200	RPZ0E222M1012	7	6640	0.12	1100	10 \times 12
	3300	RPZ0E332M1012	7	5230	0.12	1650	10 \times 12
4	100	PPZ0G101M0506	25	1970	0.12	80	5 \times 6
	220	PPZ0G221M0507	12	2610	0.12	176	5 \times 7
	270	PPZ0G271M0507	12	2610	0.12	216	5 \times 7
	330	PPZ0G331M0508	10	2610	0.12	264	5 \times 8
	470	PPZ0G471M0608	9	2610	0.12	376	6.3 \times 8
	560	RPZ0G561M0808	7	6100	0.12	448	8 \times 8
	680	RPZ0G681M0808	7	6080	0.12	544	8 \times 8
	820	RPZ0G821M0808	7	6080	0.12	656	8 \times 8
	1000	RPZ0G102M0808	7	6080	0.12	800	8 \times 8
	1200	RPZ0G122M0808	7	6100	0.12	960	8 \times 8
	1500	RPZ0G152M0812	7	6240	0.12	1200	8 \times 12
	2200	RPZ0G222M1012	7	6440	0.12	1760	10 \times 12
	3300	RPZ0G332M1012	7	6440	0.12	2640	10 \times 12
	6.3	100	RPZ0J101M0606	15	2390	0.12	126
150		RPZ0J151M0606	15	2690	0.12	189	6.3 \times 5
220		RPZ0J221M0507	12	2690	0.12	277	5 \times 7
270		RPZ0J271M0507	12	2690	0.12	340	5 \times 7
270		RPZ0J271M0608	9	2990	0.12	340	6.3 \times 8
330		RPZ0J331M0508	10	2690	0.12	416	5 \times 8
330		RPZ0J331M0608	9	2990	0.12	416	6.3 \times 8
390		RPZ0J391M0508	10	2690	0.12	491	5 \times 8
470		RPZ0J471M0608	8	4700	0.12	592	6.3 \times 8
470		RPZ0J471M0808	8	5700	0.12	592	8 \times 8
560		RPZ0J561M0608	8	4700	0.12	706	6.3 \times 8
560		RPZ0J561M0808	8	5700	0.12	706	8 \times 8
680		RPZ0J681M0808	9	4080	0.12	857	8 \times 8
820		RPZ0J821M0608	8	4700	0.12	1033	6.3 \times 8
820		RPZ0J821M0808	8	5700	0.12	1033	8 \times 8
1000		RPZ0J102M0808	9	4080	0.12	1260	8 \times 8
1500		RPZ0J152M0812	8	4520	0.12	1890	8 \times 12
1500		RPZ0J152M1012	7	6640	0.12	1890	10 \times 12
2200			7	5440	0.12	2772	10 \times 12



鋁電解電容器

Aluminum Electrolytic Capacitor

RPZ Series

■ 编码和规格 Part number & Specifications

额定电压 Rated Voltage (V)	标称容量 Capacitance (μ F)	产品编码 Part Number	等效串联电阻 ESR(m Ω max) 100Khz to 300Khz	耐纹波电流 (mA rms/ 105 $^{\circ}$ C, 100Khz)	损耗 Tan δ (120Hz)	漏电流 (max) (μ A)	尺寸 Φ D \times L (mm)
10	150	RPZ1A151M0507	13	2690	0.12	300	5 \times 7
	220	RPZ1A221M0507	13	2690	0.12	440	5 \times 7
	220	RPZ1A221M0606	15	2200	0.12	440	6.3 \times 5
	270	RPZ1A271M0608	12	2690	0.12	540	6.3 \times 8
	330	RPZ1A331M0608	12	2690	0.12	660	6.3 \times 8
	330	RPZ1A331M0808	9	4080	0.12	660	8 \times 8
	470	RPZ1A471M0808	9	4080	0.12	940	8 \times 8
	470	RPZ1A471M0812	8	4080	0.12	940	8 \times 12
	560	RPZ1A561M0812	8	4080	0.12	1120	8 \times 12
	680	RPZ1A681M0812	8	4520	0.12	1360	8 \times 12
	820	RPZ1A821M0812	8	4520	0.12	1640	8 \times 12
	1000	RPZ1A102M0812	8	4520	0.12	2000	8 \times 12
1000	RPZ1A102M1012	7	5100	0.12	2000	10 \times 12	
1500	RPZ1A152M1012	7	5100	0.12	3000	10 \times 12	
16	33	RPZ1C330M0508	15	2200	0.12	106	5 \times 8
	47	RPZ1C470M0508	15	2200	0.12	150	5 \times 8
	68	RPZ1C680M0508	15	2200	0.12	218	5 \times 8
	68	RPZ1C680M0608	14	2690	0.12	218	6.3 \times 8
	82	RPZ1C820M0608	13	2690	0.12	263	6.3 \times 8
	100	RPZ1C101M0508	13	2200	0.12	320	5 \times 8
	100	RPZ1C101M0608	12	2690	0.12	320	6.3 \times 8
	150	RPZ1C151M0608	12	2690	0.12	480	6.3 \times 8
	220	RPZ1C221M0608	12	2690	0.12	704	6.3 \times 8
	220	RPZ1C221M0808	10	5000	0.12	704	8 \times 8
	270	RPZ1C271M0808	10	5000	0.12	864	8 \times 8
	330	RPZ1C331M0808	10	5000	0.12	1056	8 \times 8
	470	RPZ1C471M0812	10	5230	0.12	1504	8 \times 12
	470	RPZ1C471M1012	10	6100	0.12	1504	10 \times 12
	560	RPZ1C561M1012	10	6100	0.12	1792	10 \times 12
680	RPZ1C681M1012	10	6100	0.12	2176	10 \times 12	
820	RPZ1C821M1012	10	6100	0.12	2624	10 \times 12	
25	47	RPZ1E470M0606	40	1050	0.12	235	6.3 \times 5
	68	RPZ1E680M0608	30	1600	0.12	340	6.3 \times 8
	100	RPZ1E121M0808	22	1800	0.12	500	8 \times 8
	220	RPZ1E221M1012	22	4000	0.12	1100	8 \times 8
	270	RPZ1E271M1012	14	4000	0.12	1350	8 \times 12
	330	RPZ1E331M0812	16	3000	0.12	1650	8 \times 12
	330	RPZ1E331M1012	14	4000	0.12	1650	10 \times 12
	470	RPZ1E471M1012	14	4000	0.12	2350	10 \times 12

■ 纹波电流频率补偿系数 Frequency coefficient of allowable ripple current

Frequency 频率	120Hz \leq f<1KHz	1KHz \leq f<10KHz	10KHz \leq f<100KHz	100kHz \leq f<500KHz
Coefficient 系数	0.05	0.30	0.70	1.00