

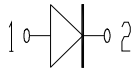
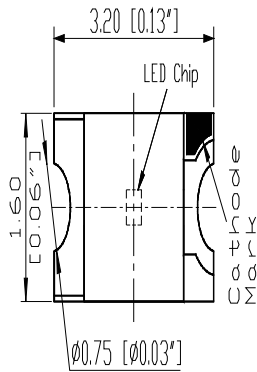
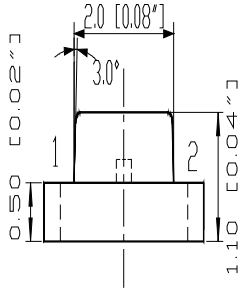
SURFACE MOUNT LED LAMPS

表面黏著型發光二極體指示燈

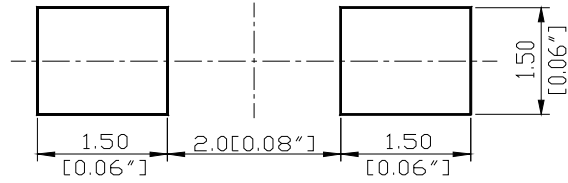
S150 Series SMD Chip LED Lamps


Part Number: 150UR

Package outlines



RECOMMEND PAD LAYOUT





ATTENTION
OBSERVE PRECAUTIONS
FOR HANDLING
ELECTROSTATIC
SENSITIVE DEVICES

ITEM	MATERIALS
Resin (mold)	Epoxy
Bonding Wire	$\phi 25 \mu\text{m Au}$
Lens color	Water transparent
Printed circuit board	BT (white)
Dice	GIGaAs
Emitted color	Red

NOTES:

1. All dimensions are in millimeters (inches);
2. Tolerances are $\pm 0.1\text{mm}$ (0.004inch) unless otherwise noted.

SURFACE MOUNT LED LAMPS

表面黏著型發光二極體指示燈

Part Number: 150UR

Absolute maximum ratings $(T_A=25^{\circ}\text{C})$

Parameter	Symbol	Value	Unit
Forward current	I _f	30	mA
Reverse voltage	V _r	5	V
Power dissipation	P _d	120	mW
Operating temperature range	T _{op}	-20 ~+80	°C
Storage temperature range	T _{stg}	-20 ~+80	°C
Peak pulsing current (1/8 duty f=1kHz)	I _{fp}	125	mA

Electro-optical characteristics $(T_A=25^{\circ}\text{C})$

Parameter	Test Condition	Symbol	Value			Unit
			Min	Typ	Max	
Wavelength at peak emission	I _f =20mA	λ_{peak}		660		nm
Spectral half bandwidth	I _f =20mA	$\Delta\lambda$	--	20	--	nm
Dominant wavelength	I _f =20mA	λ_{dom}	--	643	--	nm
Forward voltage	I _f =20mA	V _f	--	1.9	2.6	V
Luminous intensity * 1	I _f =20mA	I _v		17	--	mcd
Viewing angle at 50% I _v	I _f =10mA	2 $\theta_{1/2}$	--	140	--	Deg
Reverse current	V _r =5V	I _r	--	--	10	μA

* 1 Note: Luminous intensity tolerance is $\pm 10\%$.

SURFACE MOUNT LED LAMPS

表面黏著型發光二極體指示燈

Reflow Profile

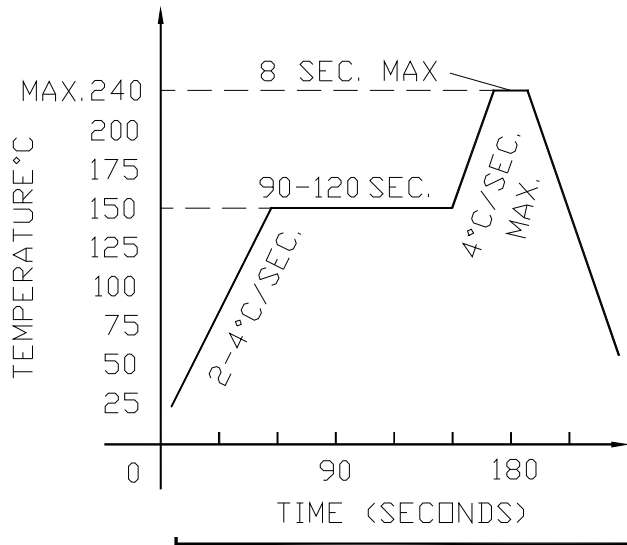
SURFACE MOUNT LED LAMPS

表面黏著型發光二極體指示燈

Test circuit

Test circuit

REFLOW PROFILE



Soldering iron

Basic spec is ≤ 5 sec when 260°C . If temperature is higher, time should be shorter

Handling precautions

- Over-current-proof
Power dissipation of iron should be smaller than 15W, and temperatures should be controllable. Surface temperature of the device should be under 230°C . Customer must apply resistors for protection; otherwise slight voltage shift will cause

Rework

- Customer must finish rework within 5 sec under 260°C .

Storage

- The head of iron can not touch copper foil
- It is recommended to store the products in the following conditions:
 - Twin-head type is preferred.
Humidity: 60% R.H. Max.

Temperature

2.2 Shelf life

Opened

≤ 20 R.

Baking

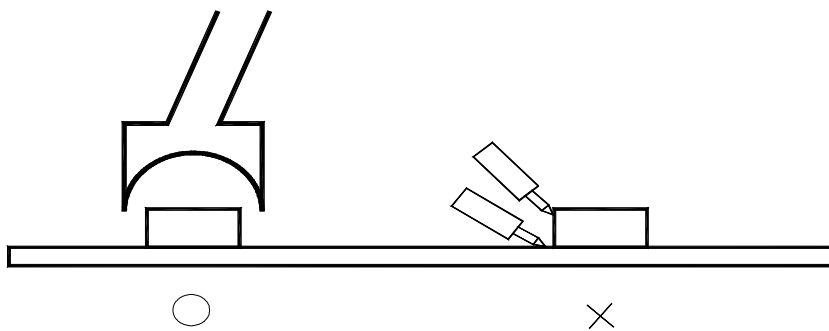
It is recommended

Conditions :

3.1 $60 \pm 3^{\circ}\text{C}$ x(12~24hrs) and $< 5\%$ RH, taped reel type

3.2 $100 \pm 3^{\circ}\text{C}$ x(45min~1hr), bulk type

3.3 $130 \pm 3^{\circ}\text{C}$ x(15~30min), bulk type



After the package is
keeping to stored at

72hrs. The

SURFACE MOUNT LED LAMPS

表面黏著型發光二極體指示燈

Test items and results of reliability

Type	Test Item	Test Conditions	Note	Number of Damaged
Sequential	Temperature Cycle	-20°C 30min ↑↓ 80°C 30min	100 cycle	0/22
	Thermal Shock	-20°C 15min ↑↓ 80°C 15min	100 cycle	0/22
	High Humidity Heat Cycle	30°C ↔ 65°C 90%RH 24hrs/1cycle	10 cycle	0/22
	High Temperature Storage	T _a =80°C	1000 hrs	0/22
	Humidity Heat Storage	T _a =60°C RH=90%	1000 hrs	0/22
	Low Temperature Storage	T _a =-30°C	1000 hrs	0/22
Sequential	Life Test	T _a =25°C I _F =20mA	1000 hrs	0/22
	High Humidity Heat Life Test	60°C RH=90% I _F =10mA	500 hrs	0/22
	Low Temperature Life Test	T _a =-20°C I _F =20mA	1000 hrs	0/22