

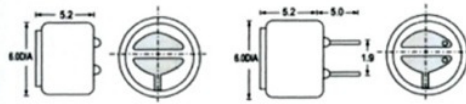
**KPCM - 6B ,KPCM - 6B- P(6.0X5.2)**

**UNIT:mm**

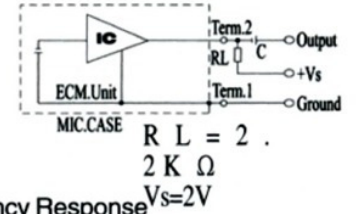


**Dimensions**

Lead Wire Type KPCM - 6B PCB Type KPCM - 6B-P



**Schematic**



**Specifications**

- Sensitivity :See Model No. Table
- Impedance :2.2K  $\Omega$  Max
- Standard Power Supply :2.0V DC
- Current Consumption :0.5mA Max
- Sensitivity Reduction :within-3dB at 1.0V
- S/N Ratio :more than 60dB
- Directivity :Omnidirectional

| Sensitivity<br>(0dB=1v/ub at 1kHz) | Sensitivity show method   |
|------------------------------------|---|
| -70 $\pm$ 2dB                      | As 1 pa=10ub, therefore when it be pa or ub showed, there would be -20ub distance between them.<br>For examples:<br>-40dB(0dB=1v/pa) is equivalent to<br>-60dB(0dB=1v/ub) |
| -68 $\pm$ 2dB                      |   |
| -66 $\pm$ 2dB                      |   |
| -64 $\pm$ 2dB                      |   |
| -62 $\pm$ 2dB                      |   |
| -60 $\pm$ 2dB                      |   |
| -58 $\pm$ 2dB                      |   |

**Frequency Response**

