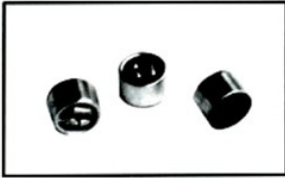
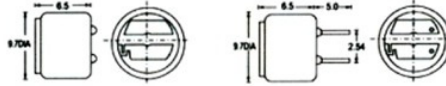


KPCM - 18WB , KPCM - 18WB - P(9.7X6.5) UNIT:mm

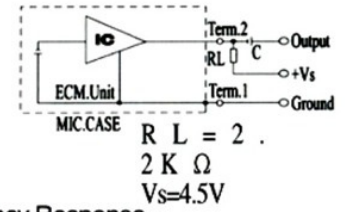


Dimensions

Lead Wire Type KPCM - 18WB PCB Type KPCM - 18WB - P



Schematic



Specifications

- Sensitivity :See Model No. Table
- Impedance :2.2K Ω Max
- Standard Power Supply :4.5V DC
- Current Consumption :0.5mA Max
- Sensitivity Reduction :within-3dB at 3V
- S/N Ratio :more than 60dB
- Directivity :Omnidirectional

Sensitivity (0dB=1v/ μ b at 1kHz)	Sensitivity show method
-66 \pm 2dB	As 1 pa=10 μ b, therefore when it be pa or μ b showed, there would be -20 μ b distance between them. For examples: -40dB(0dB=1v/pa)is equivalent to -60dB(0dB=1v/ μ b)
-64 \pm 2dB	
-62 \pm 2dB	
-60 \pm 2dB	
-58 \pm 2dB	
-56 \pm 2dB	
-54 \pm 2dB	
> -52dB	

Frequency Response

