

Ratings

Rated voltage	Noninductive Load(A)				Inductive Load(A)			
	Resistance Load		Lamp Load		Inductive Load		Motor Load	
	NC	NO	NC	NO	NC	NO	NC	NO
125VAC 250VAC	5(0.1) 3		1.5 1	0.7 0.5	3 2		2.5 1.5	1.3 0.8
8VDC	5(0.1)		2		5	4	3	
14VDC	5(0.1)		2		4	4	3	
30VDC	4(0.1)		2		3	3	3	
125VDC	0.4		0.05		0.4	0.4	0.05	
250VDC	0.2		0.03		0.2	0.2	0.03	

Operating characteristics

Models	CZ-3101	CZ-3102	CZ-3103	CZ-3104	CZ-3110	CZ-3111	CZ-3112	CZ-3113	CZ-3169
OF Max.	1200gf(11.77N)	1200gf(11.77N)	1200gf(11.77N)	580gf(5.69N)	1200gf(11.77N)	1800gf(17.65N)	1800gf(17.65N)	1800gf(17.65N)	150gf(1.47N)
RF Min.	450gf(4.41N)	450gf(4.41N)	450gf(4.41N)	150gf(1.47N)	450gf(4.41N)	450gf(4.41N)	450gf(4.41N)	50gf(4.41N)	-
PT Max.	1.8mm	1.8mm	1.8mm	25	1.8mm	1.8mm	1.8mm	1.8mm	15
OT Min.	3mm	3mm	3mm	40	3mm	3mm	3mm	3mm	-
MD Max.	0.2mm	0.2mm	0.2mm	3	0.2mm	0.2mm	0.2mm	0.2mm	-
OP	15.7±1mm	28.5±1mm	28.5±1mm	-	28.5±1mm	24.9±1mm	34.3±1mm	34.3±1mm	-

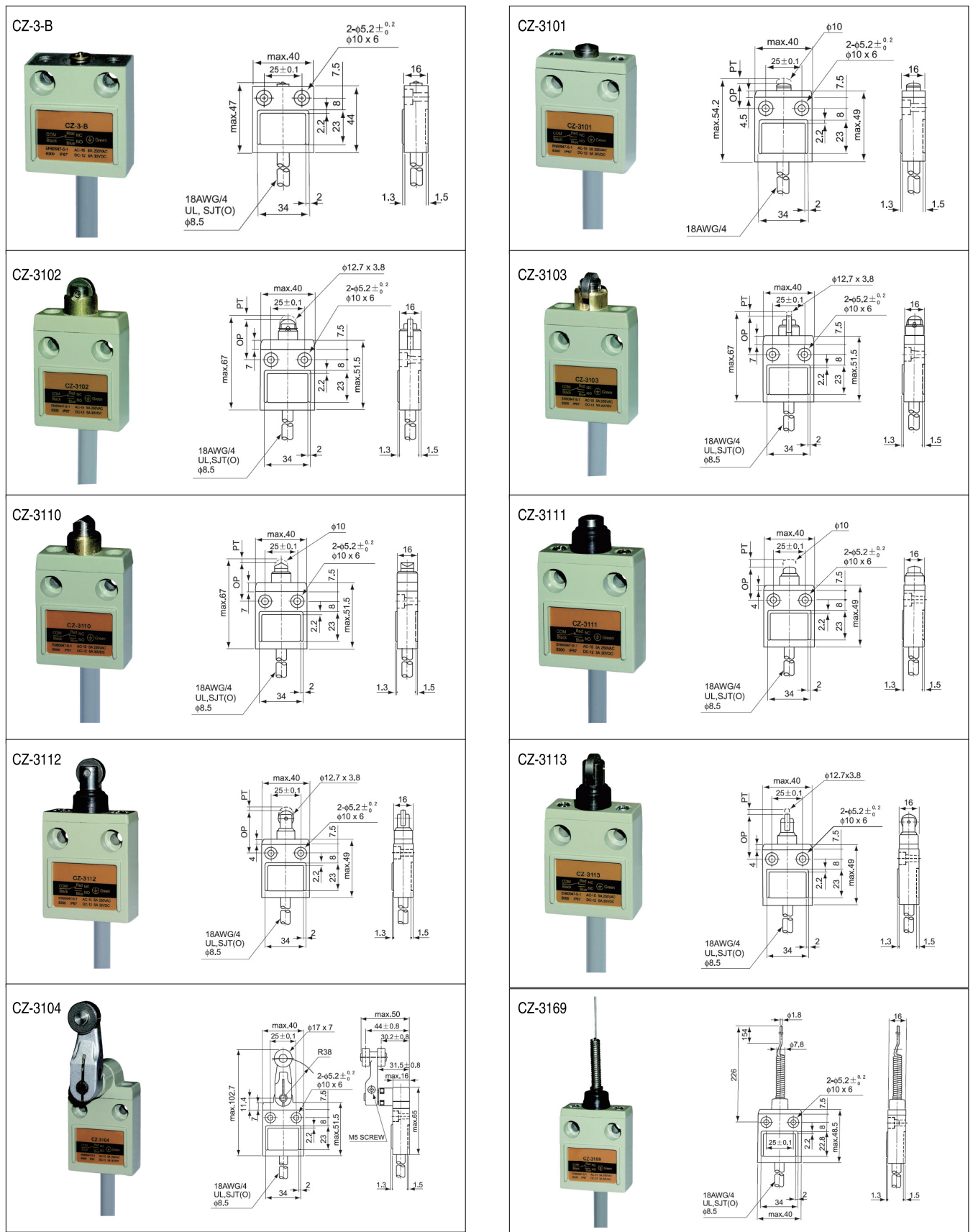
Specifications

- DPDS limit switch for multiple applications.
- Rugged aluminum alloy diecast housing
- High mechanical strength.
- Oil resistance,waterproof and dustproof structure.

Characteristics

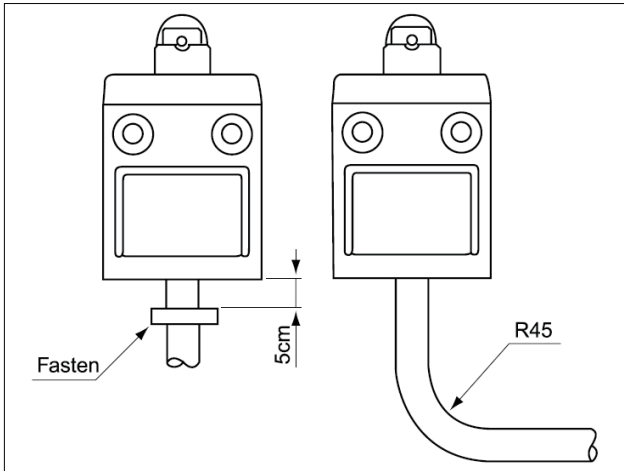
Rating	5A 125V,3A 250VAC
Operation speed	1mm~1m/s
Operating frequency	Mechanical:120 operations/min.
	Electrical:30 operations/min.
Contact resistance	15mΩ max. (initial value)
Insulation resistance	100mΩ min. at 500VDC
Dielectric strength	1000VAC, 50/60 HZ for 1 minute between terminals of the same polarity
	1500VAC, 50/60 HZ for 1 minute between current-carrying and non-current-carrying metal parts
	1500VAC, 50/60 HZ for 1 minute between each terminal and ground
Vibration	10-55HZ,1.5mm double amplitude
Shock	Mechanical durable: 1, 000m/Sec ² (about 100G'S)
	Malfunction: 300m/Sec ² (about 30G'S)
Ambient temperature	-10°Cto +70°C
Humidity	Below 95%RH
Life	Mechanical: 10,000,000 operations above
	Electrical: 500,000 operations above
Degree of protection	IEC:IP67
Weight	Approx.360g(cable length 3m)
	Approx.540g(cable length 5m)

Appearance and dimension



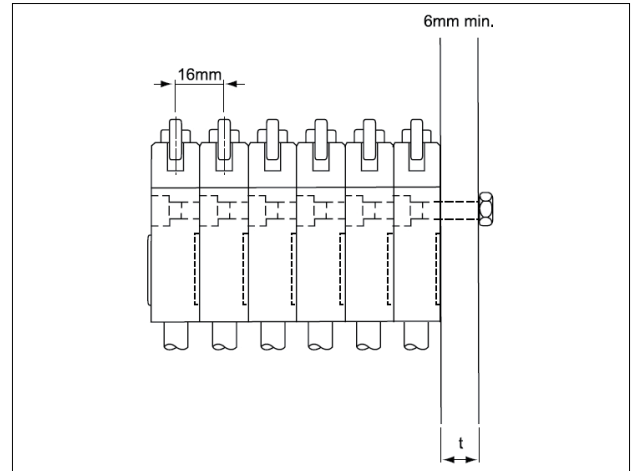
Fastening of the switch cable

The switch bodies are filled with resin for sealing purposes. To avoid stressing the cable and switch body, fasten the switch at 5cm or farther away from the switch body, should the wire be bent, the bending radius shall be at least 45mm.



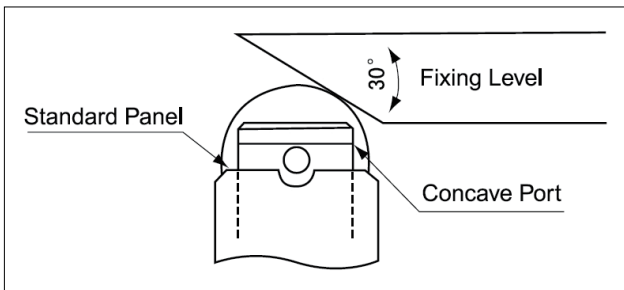
Switch bank mounting

A maximum of six switches may be mounted together as a switch bank. During the installation, the convex part of the switch back. The mounting panel shall be 6mm or thicker.



Installation

The service life and accuracy of switches will be effected by the shape of actuator operation frequency & over travel. So the angular of the fixing level should be about 30°, the surface finish of the fixing level should be over, the hardness is from HV400~500. When installing, the position of the concave part should be above the standard panel



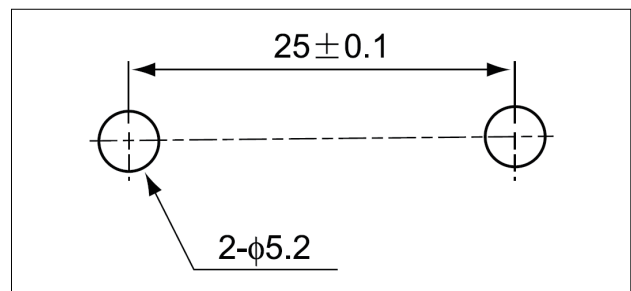
Mounting

Recommended tightening torque according to the following form.

Model	Screw type	Torque
1	M5 fastening screws	43.4~52lb.in(50~60kgf.cm)
2	M3.5 installing screws	6.9~7.9lb.in(8~9kgf.cm)

Mounting holes

Mount the switch body to a rigid mounting panel using two M5 screws.



Contact types

