

## SC Chip type, Standard Series

- Chip type higher capacitance in larger case size
- Designed for surface mounting on high density PC board
- Applicable to automatic insertion machine using carrier tape
- Complied to the RoHS directive

**S**  
Solvent Proof  
WV ≤ 100V



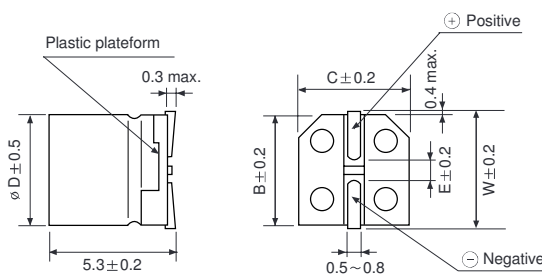
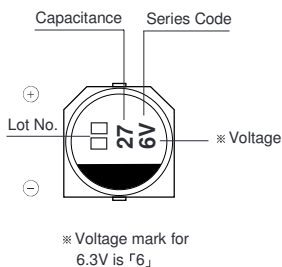
Item	Characteristics																														
Operating temperature range	-40 ~ +85°C																														
Leakage current max.	WV ≤ 100 I = 0.01CV or 3μA whichever is greater (after 2 minutes) WV ≥ 160 I = 0.04CV + 100μA (after 1 minutes)																														
Capacitance tolerance	±20% at 120Hz, 20°C																														
Dissipation factor max. (at 120Hz, 20°C)	<table border="1"> <tr> <td>WV</td> <td>4</td> <td>6.3</td> <td>10</td> <td>16</td> <td>25</td> <td>35</td> <td>50</td> <td>63</td> <td>100</td> <td>160</td> <td>200</td> <td>250</td> <td>400</td> <td>450</td> </tr> <tr> <td>tanδ</td> <td>0.35 (0.40)</td> <td>0.28 (0.35)</td> <td>0.20 (0.24)</td> <td>0.16 (0.20)</td> <td>0.13 (0.16)</td> <td>0.12 (0.15)</td> <td>0.09 (0.12)</td> <td>0.12</td> <td>0.12</td> <td>0.20</td> <td>0.20</td> <td>0.20</td> <td>0.25</td> <td>0.25</td> </tr> </table> <p>Figures in ( ) are for small size, over the 6.3 × 5.8 (ø D × L)</p>	WV	4	6.3	10	16	25	35	50	63	100	160	200	250	400	450	tanδ	0.35 (0.40)	0.28 (0.35)	0.20 (0.24)	0.16 (0.20)	0.13 (0.16)	0.12 (0.15)	0.09 (0.12)	0.12	0.12	0.20	0.20	0.20	0.25	0.25
WV	4	6.3	10	16	25	35	50	63	100	160	200	250	400	450																	
tanδ	0.35 (0.40)	0.28 (0.35)	0.20 (0.24)	0.16 (0.20)	0.13 (0.16)	0.12 (0.15)	0.09 (0.12)	0.12	0.12	0.20	0.20	0.20	0.25	0.25																	
Low temperature characteristics (Impedance ratio at 120Hz)	<table border="1"> <tr> <td>WV</td> <td>4</td> <td>6.3</td> <td>10</td> <td>16</td> <td>25</td> <td>35 ~ 100</td> <td>160 ~ 250</td> <td>400 ~ 450</td> </tr> <tr> <td>Z-25°C/Z+20°C</td> <td>6</td> <td>5</td> <td>4</td> <td>3</td> <td>2</td> <td>2</td> <td>3</td> <td>6</td> </tr> <tr> <td>Z-40°C/Z+20°C</td> <td>12</td> <td>10</td> <td>8</td> <td>6</td> <td>4</td> <td>3</td> <td>6</td> <td>10</td> </tr> </table>	WV	4	6.3	10	16	25	35 ~ 100	160 ~ 250	400 ~ 450	Z-25°C/Z+20°C	6	5	4	3	2	2	3	6	Z-40°C/Z+20°C	12	10	8	6	4	3	6	10			
WV	4	6.3	10	16	25	35 ~ 100	160 ~ 250	400 ~ 450																							
Z-25°C/Z+20°C	6	5	4	3	2	2	3	6																							
Z-40°C/Z+20°C	12	10	8	6	4	3	6	10																							
Load life (after application of the rated voltage for 2000 hours at 85°C)	<table border="1"> <tr> <td>Leakage current</td> <td>Less than specified value</td> </tr> <tr> <td>Capacitance change</td> <td>Within ±20% of initial value (Small size : ±25%)</td> </tr> <tr> <td>tanδ</td> <td>Less than 200% of specified value</td> </tr> </table>	Leakage current	Less than specified value	Capacitance change	Within ±20% of initial value (Small size : ±25%)	tanδ	Less than 200% of specified value																								
Leakage current	Less than specified value																														
Capacitance change	Within ±20% of initial value (Small size : ±25%)																														
tanδ	Less than 200% of specified value																														
Shelf life (at 85°C)	After 1000 hours no load test, leakage current, capacitance and tanδ are same as load life value.																														
Resistance to soldering heat	<p>The following specifications shall be satisfied when the capacitors are restored to 20°C after exposing them at 250°C for 30 seconds.</p> <table border="1"> <tr> <td>Leakage current</td> <td>Less than specified value</td> </tr> <tr> <td>Capacitance change</td> <td>Within ±10% of initial value</td> </tr> <tr> <td>tanδ</td> <td>Less than specified value</td> </tr> </table>	Leakage current	Less than specified value	Capacitance change	Within ±10% of initial value	tanδ	Less than specified value																								
Leakage current	Less than specified value																														
Capacitance change	Within ±10% of initial value																														
tanδ	Less than specified value																														

CHIP TYPES

### DRAWING

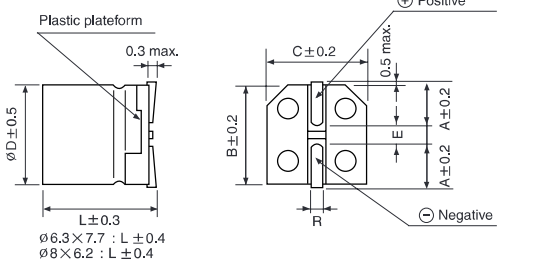
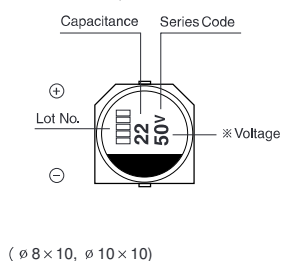
Unit : mm

(ø 4, ø 5, ø 6.3 × 5.3mL)

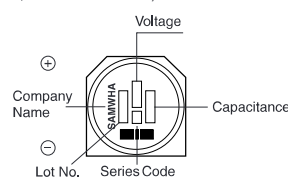


ø D × L	W	A	B	C	E	R
4 × 5.3	4.8		4.3	4.3	1.0	0.5~0.8
5 × 5.3	6.0		5.3	5.3	1.4	0.5~0.8
6.3 × 5.3	7.1		6.6	6.6	2.2	0.5~0.8
6.3 × 5.8		2.4	6.6	6.6	2.2	0.5~0.8
6.3 × 7.7		2.4	6.6	6.6	2.2	0.5~0.8
8 × 6.2		3.3	8.3	8.3	2.3	0.5~0.8
8 × 10		2.9	8.3	8.3	3.1	0.8~1.1
10 × 10		3.2	10.3	10.3	4.5	0.8~1.1
12.5 × 13.5		4.6	12.8	12.8	4.5	1.1~1.4

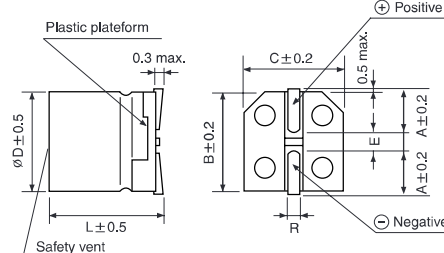
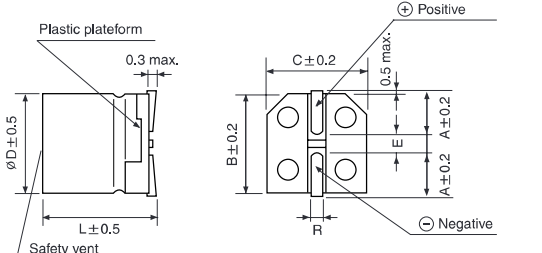
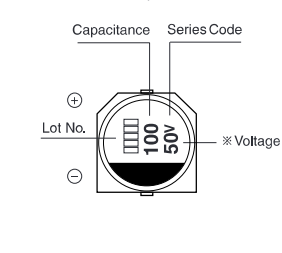
(ø 6.3, ø 8 × 6.2)



(ø 12.5 × 13.5mL)



(ø 8 × 10, ø 10 × 10)



# SURFACE MOUNT ALUMINUM ELECTROLYTIC CAPACITORS



## ● DIMENSIONS & MAXIMUM PERMISSIBLE RIPPLE CURRENT

μF \ WV	4		6.3		10		16		25		35		50	
	Case size	WV	Case size	WV	Case size	WV	Case size	WV	Case size	WV	Case size	WV	Case size	WV
0.1													3 × 5.3	2.4
													4 × 5.3	3.2
0.22													3 × 5.3	3.5
													4 × 5.3	4.7
0.33													3 × 5.3	4.3
													4 × 5.3	5.7
0.47													3 × 5.3	5.2
													4 × 5.3	6.8
1.0													3 × 5.3	7.5
													4 × 5.3	10
2.2											3 × 5.3	10	4 × 5.3	15
											4 × 5.3	11		
3.3									3 × 5.3	12	4 × 5.3	16	4 × 5.3	18
									4 × 5.3	15				
4.7							3 × 5.3	13	4 × 5.3	18	4 × 5.3	19	4 × 5.3	24
							4 × 5.3	16					5 × 5.3	25
10	3 × 5.3	13	3 × 5.3	16	4 × 5.3	21	4 × 5.3	21	4 × 5.3	24	4 × 5.3	27	5 × 5.3	41
	4 × 5.3	16	4 × 5.3	19					5 × 5.3	30	5 × 5.3	32	6.3 × 5.3	43
22	3 × 5.3	19	4 × 5.3	29	4 × 5.3	28	4 × 5.3	30	5 × 5.3	41	6.3 × 5.3	55	6.3 × 5.3	71
	4 × 5.3	24			5 × 5.3	36	5 × 5.3	41	6.3 × 5.3	53			6.3 × 5.8	73
33	4 × 5.3	29	4 × 5.3	30	4 × 5.3	34	5 × 5.3	43	5 × 5.3	50	6.3 × 5.3	65	6.3 × 7.7	94
			5 × 5.3	41	5 × 5.3	44	6.3 × 5.3	58	6.3 × 5.3	64	6.3 × 5.8	67	8 × 6.2	95
47	4 × 5.3	35	4 × 5.3	36	5 × 5.3	47	5 × 5.3	52	6.3 × 5.3	70	6.3 × 7.7	94	6.3 × 7.7	105
			5 × 5.3	48	6.3 × 5.3	62	6.3 × 5.3	69	6.3 × 5.8	72	8 × 6.2	105	8 × 10	140
100	5 × 5.3	54	5 × 5.3	60	6.3 × 5.3	80	6.3 × 5.3	88	8 × 6.2	145	6.3 × 7.7	132	8 × 10	181
	6.3 × 5.3	68	6.3 × 5.3	82	6.3 × 5.8	82	6.3 × 5.8	91			8 × 10	175	10 × 10	195
220	6.3 × 5.3	93	6.3 × 5.8	91	6.3 × 7.7	173	6.3 × 7.7	162	8 × 10	232	10 × 10	265	10 × 10	320
					8 × 6.2	175	8 × 10	215	10 × 10	250				
330			6.3 × 7.7	188	8 × 10	240	8 × 10	270	10 × 10	305	10 × 10	360	12.5 × 13.5	600
			8 × 6.2	190										
470			8 × 10	265	8 × 10	290	8 × 10	307	10 × 10	400	12.5 × 13.5	600		
							10 × 10	330						
1000			8 × 10	370	10 × 10	454	12.5 × 13.5	710	12.5 × 13.5	820				
			10 × 10	400										
1500			10 × 10	480	12.5 × 13.5	850								
2200			12.5 × 13.5	890	12.5 × 13.5	960								

μF \ WV	63		100		160		200		250		400		450	
	Case size	WV	Case size	WV	Case size	WV	Case size	WV	Case size	WV	Case size	WV	Case size	WV
2.2													10 × 10	85
3.3			6.3 × 5.8	29							10 × 10	90	10 × 10	100
4.7	6.3 × 5.8	31	6.3 × 5.8	35			10 × 10	100	10 × 10	100	12.5 × 13.5	115	12.5 × 13.5	115
			8 × 6.2	40										
10	8 × 5.8	46	8 × 10	77	10 × 10	100	12.5 × 13.5	150	12.5 × 13.5	150				
22	8 × 6.2	96	8 × 10	100	12.5 × 13.5	240	12.5 × 13.5	260						
33	8 × 10	117	10 × 10	130	12.5 × 13.5	260	← Ripple current (mA rms) at 85°C, 120Hz							
47	10 × 10	140	10 × 10	155	↑ Case size ∅ D × L (mm)									
68	10 × 10	160	12.5 × 13.5	350										
100	12.5 × 13.5	370												