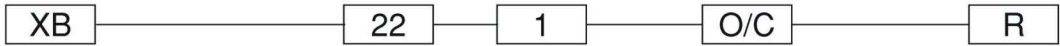
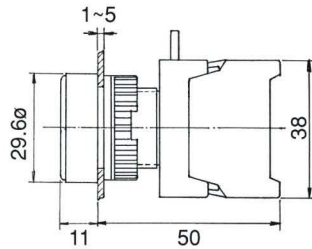


# PUSH BUTTON SWITCHES, IP65

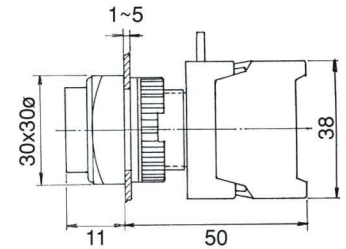


Type	Mounting hole	No. of contact	Type of contact	Lens colour
XB, GBF, PBF: Flat head XBL, GBL, PBL: Long head XBS: Square head XLS: Square long head XBG: Guard ring XGS: Guard ring square XE, EB, GEB, XES: Mushroom head 40ø BXE, BEB: Mushroom head 60ø LEB, GLEB: Latching head PF, EPF, GPF, GEPF: Push on-Push off	22 : 22ø 30 : 30ø	1 2 3 4	O: N/O(a) C: N/C(b) O/C: N/O+N/C 1a+1b	● R: Red ● G: Green ● Y: Yellow ● BL: Blue ● BK: Black ○ W: White

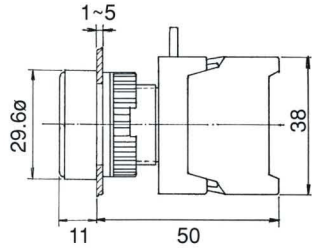
**XB22-1/O**



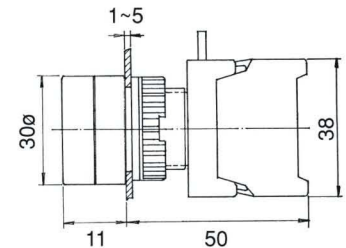
**XLS22-1/O XLS22-1O/C**  
**XLS22-1/C**



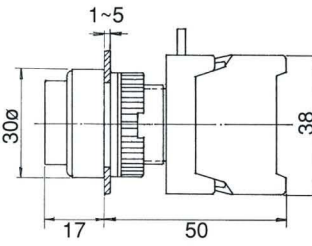
**XB22-1O/C**



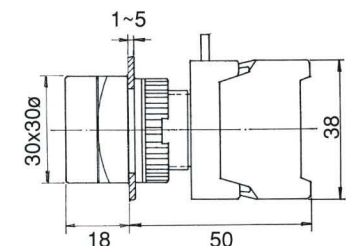
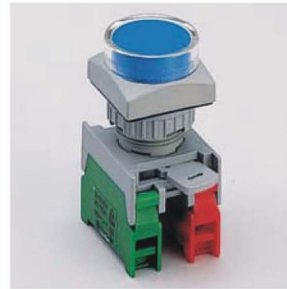
**XBG22-1/O XBG22-1O/C**  
**XBG22-1/C**



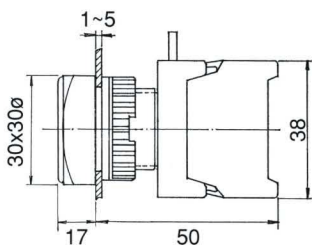
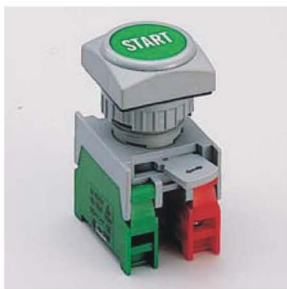
**XBL22-1/O XBL22-1O/C**  
**XBL22-1/C**



**XGS22-1/O XGS22-1O/C**  
**XGS22-1/C**



**XBS22-1/O XBS22-1O/C**  
**XBS22-1/C**



**XE22-1/O XE22-1O/C**  
**XE22-1/C**

