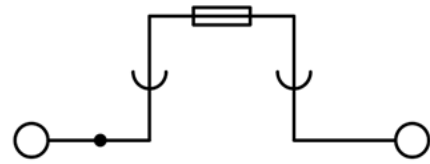
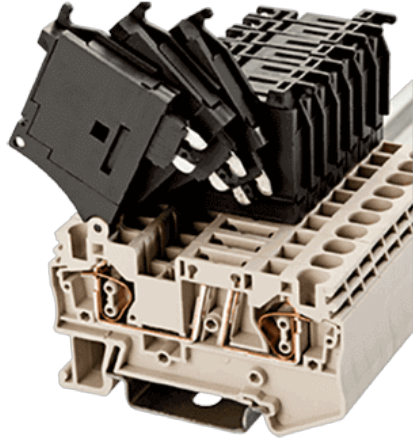


# AK4-TF(5X20)

DIN Rail Terminal Blocks > Spring Clamp Connection



circuit diagram

## Product Description

300V, 11A , Gray color

## General information

Short description	DIN Rail terminal blocks , Fuse terminal blocks
Connection method	Spring Clamp Connection
Type of locking	Rail Mounting
Category	Fuse terminal blocks
Level	Single level
Connection points	2

## Material information

Insulation material	PA
Flame retardant rating , compliant with UL94	V0
Color	Gray
Conductor material	Copper Alloy
Plating of conductor surface	Tinned

## Connection data-UL

Stripping Length mm	10
Slotted screwdriver size (Blade thickness x Width) mm	0.6x3.5

Mounting rail	TS-35
End cover plate required	NO
PE connections	NO
AWG, compliant with UL/CUL, Sol. max (group B)	10
AWG, compliant with UL/CUL, Sol. min (group B)	28
AWG, compliant with UL/CUL, Str. max (group B)	10
AWG, compliant with UL/CUL, Str. min (group B)	28
AWG, compliant with UL/CUL, Sol. max (group C)	10
AWG, compliant with UL/CUL, Sol. min (group C)	28
AWG, compliant with UL/CUL, Str. max (group C)	10
AWG, compliant with UL/CUL, Str. min (group C)	28

## Connection data-IEC

Surge voltage category	III
Pollution degree	3
Insulating material group	I
Rated impulse voltage KV (III/3)	6
Conductor cross section solid. min mm <sup>2</sup>	0.2
Conductor cross section solid.max mm <sup>2</sup>	6
Conductor cross section stranded. min mm <sup>2</sup>	0.2
Conductor cross section stranded. max mm <sup>2</sup>	4
Conductor cross section flexible, with max ferrule without plastic sleeve mm <sup>2</sup>	4
Conductor cross section flexible, with min ferrule without plastic sleeve mm <sup>2</sup>	0.25
Conductor cross section flexible, with max ferrule with plastic sleeve mm <sup>2</sup>	4
Conductor cross section flexible, with min ferrule with plastic sleeve mm <sup>2</sup>	0.25
2 conductors with same cross section flexible, max twin ferrules with plastic sleeve mm <sup>2</sup>	1
2 conductors with same cross section flexible, min twin ferrules with plastic sleeve mm <sup>2</sup>	0.5

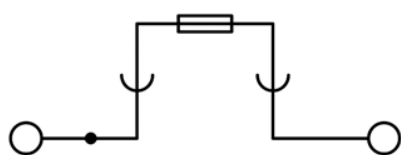
## Connection data-EX

Operating temperature °C	-20°C~85°C
--------------------------	------------

## Environment & Safety

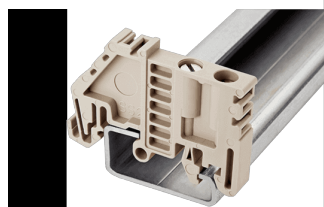
Back of the hand protection (YES or NO)	YES
Finger protection (YES or NO)	YES
Operating temperature. max °C	120
Operating temperature. min °C	-40

## Drawings



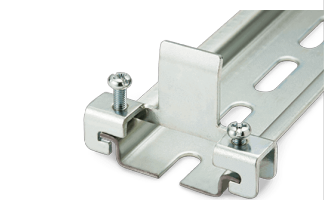
circuit diagram

## Accessories



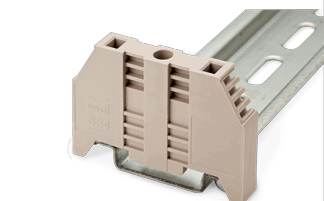
### SS2

For TS-32 / TS-32A and TS-35 / TS-35A rails Gray color Using UL94-V2 class of insulation material



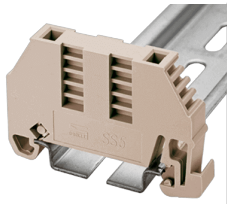
### SS3

For TS-35 / TS-35A rails Material is steel then galvanized then on the surface



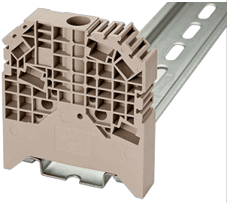
### SS4

For TS-35 / TS-35A rails Gray color Using UL94-V2 class of insulation material



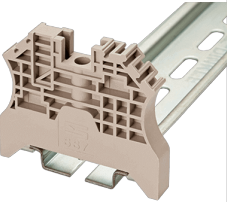
SS5

For TS-35 / TS-35A rails Gray color Using UL94-V2 class of insulation material



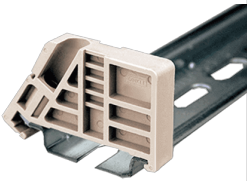
SS6

For TS-35 / TS-35A rails Gray color Using UL94-V2 class of insulation material



SS7

For TS-35 / TS-35A rails Gray color Using UL94-V2 class of insulation material



SS11

For TS-35 / TS-35A rails Gray color Using UL94-V2 class of insulation material



MKH-001

For SS2 / SS4 / SS5 / SS6 / SS7 Using UL94-V2 class of insulation material

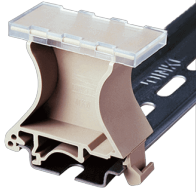
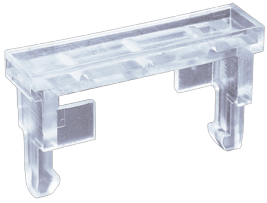


MKH-002

For SS6 of terminal holder Using UL94-V2 class of insulation material

MKL

For SS4 / SS5 Using UL94-V2 class of insulation material



MKW

For TS-35 / TS-35A rails Gray color Using UL94-V2 class of insulation material



FUK6.3A-01

For AK4-TF (5X20) / DK4N-TF (5X20) / DK4-TF (5X20) / DK4-TFL .. (5X20) /  
DKK4-TF (5X20) / DK10-TF / DK10-TFA Rated voltage of 250V Rated current of  
6.3A



TS-35C

For TS-35 rail Black color Using UL94-V2 class of insulation material



TS-35

For DK / DK-PE / AK / AK-PE / AK..P Series Material is iron Length of 1000mm

## Approvals

