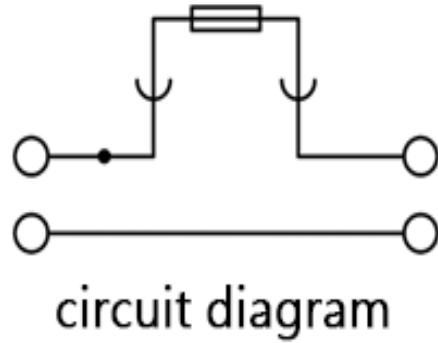
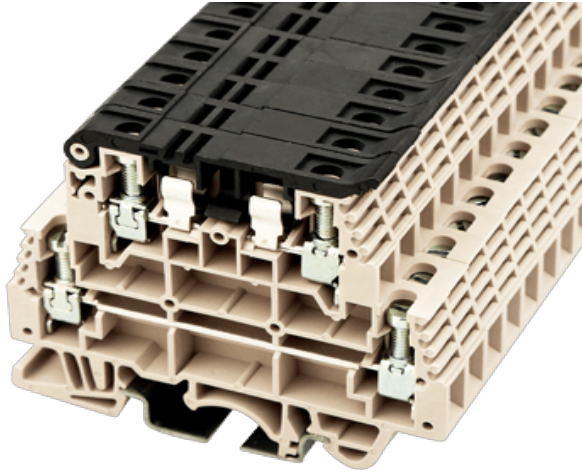


DKK4-TF(5X20)

DIN Rail Terminal Blocks > Screw Connection



Product Description

M3.5, 300V, 16str/30sol, Gray color

General information

Short description	DIN rail terminal blocks , Fuse terminal blocks
Connection method	Screw connection
Type of locking	Rail mounting
Category	Fuse terminal blocks
Thread	M3.5
Level	Double level
Connection points	4

Material information

Insulation material	PA
Flame retardant rating , compliant with UL94	V0
Color	Gray
Conductor material	Copper Alloy
Plating of conductor surface	Tinned

Connection data-UL

Stripping Length mm	10~12
---------------------	-------



Slotted screwdriver size (Blade thickness x Width) mm	0.8x4.0
Rated torque (UL) N.m	0.69
Mounting rail	TS-35/TS-32
End cover plate required	YES
PE connections	NO
Rated voltage V (UL/CUL standard group B)	300
Rated current A (UL/CUL standard group B)	16str/30sol
AWG, compliant with UL/CUL, Sol. max (group B)	10
AWG, compliant with UL/CUL, Sol. min (group B)	22
AWG, compliant with UL/CUL, Str. max (group B)	10
AWG, compliant with UL/CUL, Str. min (group B)	22
Rated voltage V (UL/CUL standard group C)	300
Rated current A (UL/CUL standard group C)	16/30
AWG, compliant with UL/CUL, Sol. max (group C)	10
AWG, compliant with UL/CUL, Sol. min (group C)	22
AWG, compliant with UL/CUL, Str. max (group C)	10
AWG, compliant with UL/CUL, Str. min (group C)	22
Rated voltage V (UL/CUL standard group D)	600
Rated current A (UL/CUL standard group D)	5
AWG, compliant with UL/CUL, Sol. max (group D)	10
AWG, compliant with UL/CUL, Sol. min (group D)	22
AWG, compliant with UL/CUL, Str. max (group D)	10
AWG, compliant with UL/CUL, Str. min (group D)	22

Connection data-IEC

Surge voltage category	III
Pollution degree	3
Insulating material group	I
Rated current A	16/30
Rated voltage V	800
Rated voltage V (III/3)	800
Rated impulse voltage KV (II/2)	8
Rated impulse voltage KV (III/2)	8
Rated impulse voltage KV (III/3)	8

Conductor cross section solid. min mm ²	0.5
Conductor cross section solid.max mm ²	4
Conductor cross section stranded. min mm ²	0.5
Conductor cross section stranded. max mm ²	4

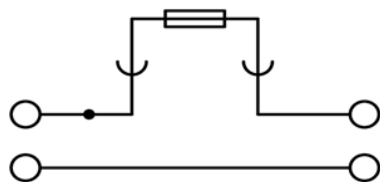
Connection data-EX

Operating temperature °C	-20°C~85°C
--------------------------	------------

Environment & Safety

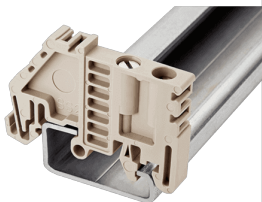
Back of the hand protection (YES or NO)	YES
Finger protection (YES or NO)	YES
Operating temperature. max °C	115
Operating temperature. min °C	-40

Drawings



circuit diagram

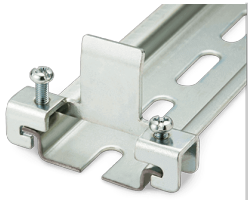
Accessories



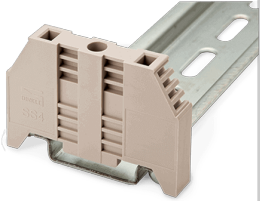
SS2

For TS-32 / TS-32A and TS-35 / TS-35A rails Gray color Using UL94-V2 class of insulation material

SS3

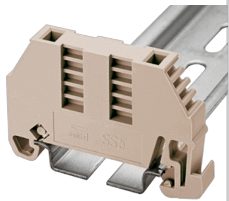


For TS-35 / TS-35A rails Material is steel then galvanized then on the surface



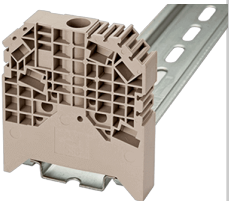
SS4

For TS-35 / TS-35A rails Gray color Using UL94-V2 class of insulation material



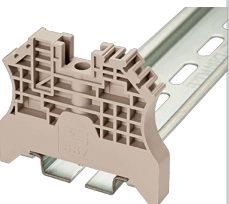
SS5

For TS-35 / TS-35A rails Gray color Using UL94-V2 class of insulation material



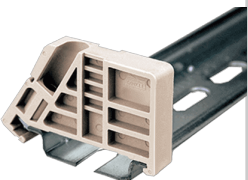
SS6

For TS-35 / TS-35A rails Gray color Using UL94-V2 class of insulation material



SS7

For TS-35 / TS-35A rails Gray color Using UL94-V2 class of insulation material



SS11

For TS-35 / TS-35A rails Gray color Using UL94-V2 class of insulation material

MKH-001

For SS2 / SS4 / SS5 / SS6 / SS7 Using UL94-V2 class of insulation material



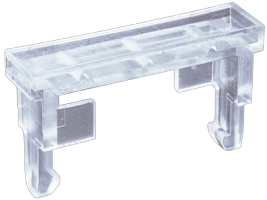
MKH-002

For SS6 of terminal holder Using UL94-V2 class of insulation material



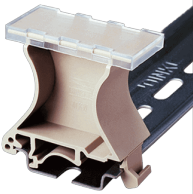
MKL

For SS4 / SS5 Using UL94-V2 class of insulation material



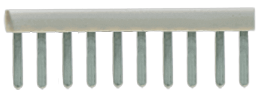
MKW

For TS-35 / TS-35A rails Gray color Using UL94-V2 class of insulation material



CSD02-638-A

For DK6 / DK6N / DK6 / DKTL6 / DK4-TF (5x20) / DKK4-TF (5X20) Gray color
Using UL94-V0 class of insulation material



FUK6.3A-01

For AK4-TF (5X20) / DK4N-TF (5X20) / DK4-TF (5X20) / DK4-TFL .. (5X20) /
DKK4-TF (5X20) / DK10-TF / DK10-TFA Rated voltage of 250V Rated current of
6.3A



TS-35C

For TS-35 rail Black color Using UL94-V2 class of insulation material



TS-32

For DK / DK-PE Series Material is iron Length of 1000mm



TS-35

For DK / DK-PE / AK / AK-PE / AK..P Series Material is iron Length of 1000mm

Approvals

