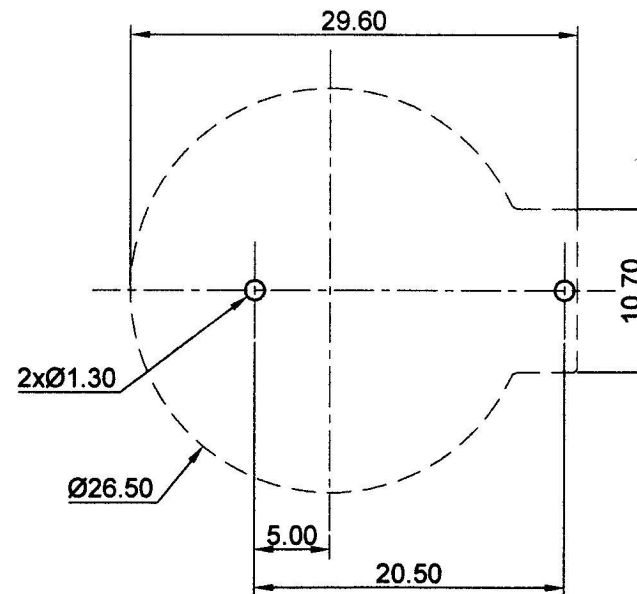


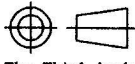
SECTION A-A



PCB MOUNTING LAYOUT

SPECIFICATION

- (1) ITEM NO. : CH031-2477LF
- (2) HOUSING MATERIAL: PBT UL94V0, BLACK COLOR
- (3) CONTACT 1 MATERIAL: 0.3MM THICK PHOSPHOR BRONZES NICKEL PLATED  
CONTACT 2 MATERIAL: 0.4MM THICK PHOSPHOR BRONZES NICKEL PLATED
- (4) CURRENT RATING : 0.5A (AC/DC)
- (5) VOLTAGE RATING : 500V (AC/DC)
- (6) CONTACT RESISTANCE: 30 MILLIOHMS
- (7) INSULATION RESISTANCE: 1000 MEGAOHMS
- (8) TEMPERATURE RANGE: -55° C TO +85° C
- (9) HUMIDITY: 40° C AND 90-95% RH FOR 96 HOURS
- (10) RoHS COMPLIANT

3			<b>COMP COMFORTABLE ELECTRONIC CO.LTD.</b>		
2					
1			<b>NAME</b>	COIN CELL HOLDER: CH031-2477LF	
<b>NO.</b>	<b>MODIFICATION</b>	<b>DATE</b>	<b>SCALE</b>	2:1	<b>APPD</b>
<b>General Tolerances</b>			<b>UNIT</b>	MM	<b>CHKD</b>
0 ~ >3	± 0.10	30 ~ >120	± 0.30	<b>MAT'L</b>	SEE SPEC.
3 ~ >6	± 0.10	120 ~ >400	± 0.50		<b>DWN</b>
6 ~ >30	± 0.20	Angle: ± 3°			<b>DATE</b>
			 The Third Angle Projection		<b>DR NO</b>
			<b>DATE</b>	NOV. 18. 2013	CH031-1113