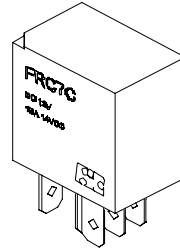


FRC7 RELAY



FEATURES

- 20A contact rating
- High temperature design
- 1 Form A & 1 Form C arrangements
- Ideal use for control car
- Quick connect or PCB terminals



SPECIFICATION

COIL RATING

RATED VOLTAGE V DC	COIL RESISTANCE Ω + / - 10%		RATED CURRENT (mA)		MUST OPERATE VOLTAGE	MUST DROPOUT VOLTAGE	MAXIMUM VOLTAGE	POWER CONSUMPTION (W)
	1 Form A	1 Form C	1 Form A	1 Form C	% OF RATED VOLTAGE (AT 20°C)			
6	30	25	200	250	UNSEALED MODEL : 60 Max. SEALED MODEL : 65 Max.	10 Min.	130 Max.	1 FORM A : 1.2W
12	120	96	100	124				1 FORM C : 1.5W
24	480	384	50	62.5				

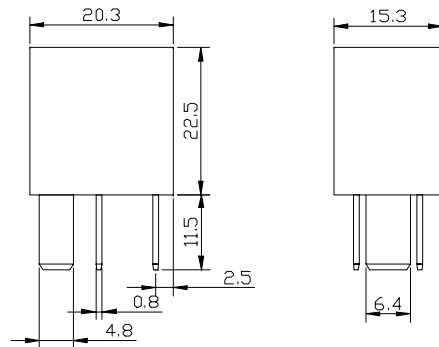
CHARACTERISTICS

Contact Arrangement	SPST (1 Form A); SPDT (1 FORM C)
Contact Material	Silver Alloy
Contact Resistance	50m Ω Max.
Contact Rating (Resistive Load)	FRC7 NO : 25A 14VDC NC : 20A 14VDC FRC7N NO : 20A 14VDC NC : 15A 14VDC
Switching Voltage	DC 75V Max
Operate Time (Initial)	10ms Max.
Release Time (Initial)	7ms Max.
Insulation Resistance	100M Ω Min. (500V DC)
Dielectric Strength	500Vrms, 1 minute between coil and contacts
Shock Resistance	10g Approx.
Vibration Resistance	1.27mm Double Amplitude, 10-40Hz

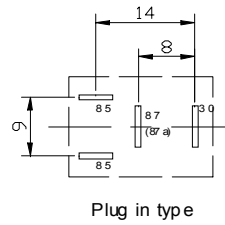
FRC7 RELAY



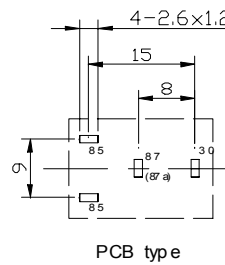
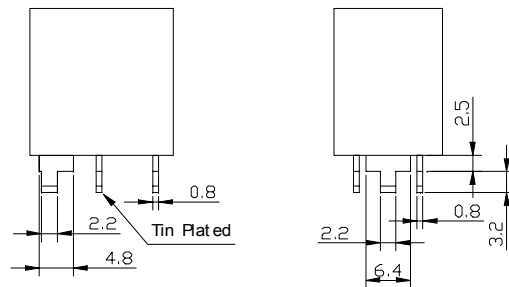
FRC7N - Plug in type



MOUNTING (BOTTOM VIEW)

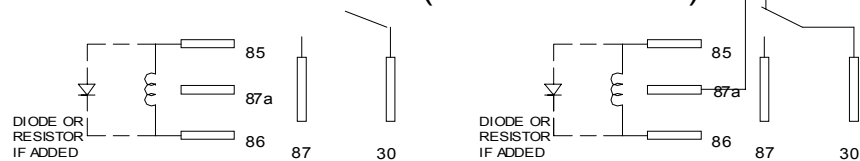


FRC7N - PCB type



FRC7

WIRING DIAGRAM (BOTTOM VIEW)



1 FORM A

1 FORM C

