

Specification

Lithium Polymer Battery Pack (LP603458) 1250mAh 3.7V with Protection Circuit Module (PCM)
 This data sheet describes the requirements and properties of lithium polymer rechargeable battery pack manufactured by AKYGA

Mechanical Characteristics

Type number: LP603458
 Designation IEC system: Lithium polymer battery pack
 Length: $58 \pm 0.5\text{mm}$
 Width: $34 \pm 0.5\text{mm}$
 Thickness: $6.0 \pm 0.4\text{mm}$
 Cable: $150 \pm 3.0\text{mm}$ (26AWG UL1571)
 Connector: JST SYP-02T/02TV-1 2.54mm connector & socket
 Weight: appr. 24.0g

Electrical Specification

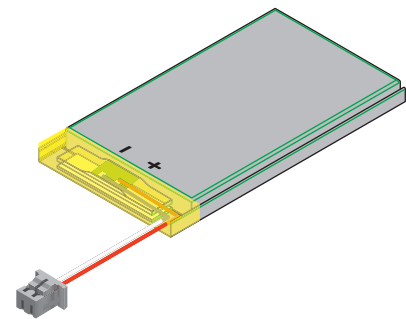
Rated capacity: 1250mAh min, 1270mAh typ.
 Nominal voltage: 3.7V
 Max. operating voltage range: 3.0V to 4.2V
 Charge voltage: $4.2 \pm 50\text{mV}$
 Initial charge current: Standard charge: 250mA
 Rapid charge: 620mA
 Charging cut-off (A or B)
 A) By time: Standard charge: 5 hours
 Rapid charge: 2 hours
 B) By min. current: 25mA
 Max continuous discharge current: 1250mA
 Internal impedance (1kHz): approx 43mOhm
 Exp. cycle life: >500 cycles >80% of initial cap. (0.5C/0.5C)
 Cell protection
 Overcharge detection: $4.325 \pm 25\text{mV}$
 (0.5 to 2.0 sec. delay, resume $4.075 \pm 50\text{mV}$)
 Overdischarge detection: $3.00V \pm 25\text{mV}$
 (6.25 to 250msec. delay, resume $2.9V \pm 100\text{mV}$)

Ambient conditions

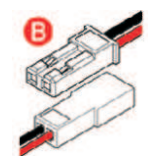
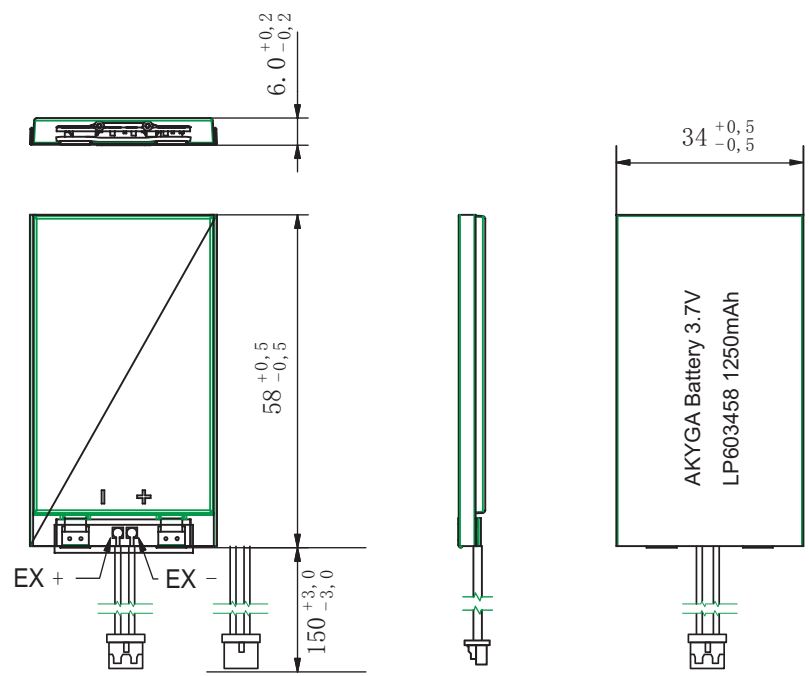
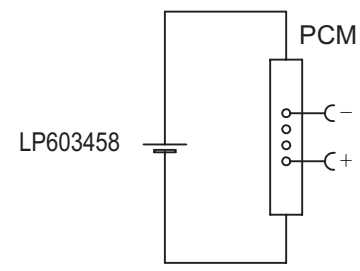
Temperature range
 Charge: 0 to $+45^\circ\text{C}$
 Discharge: -20 to $+60^\circ\text{C}$
 Charge retention/Storage: 1 year at -20 to 20°C >70%
 3 month at -20 to 45°C > 70%
 1 month at -20 to 60°C > 70%

Safety

Please follow handing and Safety Precautions Poliflex.



Circuit diagram



Index		Alteration		Date	Name
Projection:		<input type="checkbox"/> Diese Mae werden besonders geprüf <input type="checkbox"/> This dimensions are considered inspectable		Material: 66451753 5134	
Mae in mm	Freimatoleranzen	Date	Name		
All dimensions in mm	Generaltoleranzen	Erst./Orig. 07.05.2014	Xie Qingfang		
Als Betriebsgeheimnis anvertraut, alle Rechte vorbehalten.	up to 6 ' 0,1 over 6 up to 30 ' 0,2	Bearb./Desig. Gepr./Check 07.05.2014	Guo Daxia		
Proprietary data, company confidential, all rights reserved.	over 30 up to 100 ' 0,3 over 100 ' 0,5	Benennung/ Designation: LP603458		Zchng. / Dwg.Nr. 3 FD_2262_26	Index
		Origin:			