

GQ22



GQ25

GQ28



GQ30

Part-number Description

Code of series	Code name	The Front shape	Contact structure	Operation mode	Lamp type	◆ Operation position of selector and key-lock type	Lamp color	Lamp voltage	Crust material
LAS1 - ★ ☆ - □ ■ ◇ / ◆ ● / ▲ / ○	BGQ22 BGQ25 BGQ28 AGQ30 BGQ30	H High Round PF Super flat head + flat actuator No letter means flat round	11 1NO1NC 22 2NO2NC 33 3NO3NC See the detailed description which are available	Z Latching Y Key-lock No letter means momentary	D Dot E Ring C Ring+symbol illuminated	◆ Two position ◆ Three position ● Operation type of selector and key-lock type 1 Maintain 2 Half return 3 Return	R Red G Green Y Yellow O Orange B Blue W White	AC/DC 6V AC/DC 12V AC/DC 24V AC/DC 110V AC/DC 220V Other voltage can be made to order	S Stainless steel A Aluminium alloy(black)

Note: 1. Pls read the catalogue carefully, and choose the right part-number according to the sign.

2. LAS1-BGQ22 can be written GQ22 for short, LAS1-BGQ25 can be written GQ25, LAS1-BGQ28 can be written GQ28, LAS1-BGQ28 can be written GQ30, some 30mm product can not be written short. Please refer to the detailed description.

LAS1-AGQ Switch Rating

Rated Insulation Voltage Ui		250V				
Thermal Current Ith		5A				
Rated voltage		12V	24V	110V	220V	
Rated Operation Current	AC	Resistive load	—	—	1A	0.5A
	50/60Hz	Inductive load	—	—	0.7A	0.5A
		DC	Resistive load	1A	1A	0.2A
		Inductive load	0.7A	0.7A	0.1A	—
Contact material		Silver Alloy				

Minimum load: 3V AC/DC,5mA (Reference)
Application scope depends on operating environment and load type

LAS1-BGQ Switch Rating

Rated Insulation Voltage Ui		250V				
Thermal Current Ith		5A				
Rated voltage		12V	24V	110V	220V	
Rated Operation Current	AC	Resistive load	—	—	5A	3A
	50/60Hz	Inductive load	—	—	3A	2A
		DC	Resistive load	5A	5A	1A
		Inductive load	2A	2A	0.2A	0.1A
Contact material		Silver Alloy				

Minimum load: 3V AC/DC,5mA (Reference)
Application scope depends on operating environment and load type

Lamp Rating

Lamp type LED Lamp (AC/DC)
LED color R G Y O B W
Life span 40000 hours (Reference)
Rated Voltage AC/DC6V, AC/DC12V, AC/DC110V, AC/DC24V, AC/DC36V, AC/DC220V
Rated Voltage About 15mA; About 2mA
Dropping life Inner resistance
Lamp Circuit Diagram Using AC/DC LED lamp, the terminals have no difference of anode and cathode: Using inner resistance, do not need outer resistance

Note: DC LED and other voltage can be made to order.

Specifications

Operating Temperature	-25°C ~ +55°C(no freezing) Maintain good ventilation round the switch
Operating Humidity	45~85%RH(no condensation)
Contact Resistance	≤50mΩ
Insulation Resistance	≥1000MΩ
Dielectric strength	2000V, AC50Hz, 5 seconds
Vibration Resistance	50Hz,amplitude 1.2mmP-P
Shock Resistance	≥10g
Solder Heat Resistance	320°C(no more than 2 seconds)

Declaration of conformity

corresponding standard	Certification	Certificate Authority/Certification Number
EN61058-1:2002+A2:2008		VOV/VT11018806
EN60947-1:2004		CTS/CTS070706-01006-E

Terminal Description

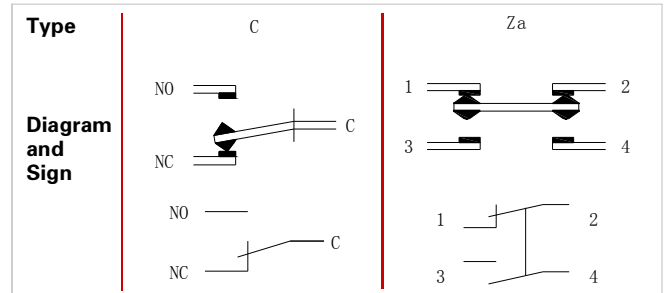
LAS1-AGQ

Two sets at most. C1, NO1, NC1 and C2, NO2, NC2 are one set respectively. C is common used, NO is normal opened, NC is normal closed; +, - are lamp terminals, the standard LED have no difference of anode and cathode; Lamp and switch are relatively independent and can use switch or peripheral circuit to control the lamp state.

LAS1-BGQ (G022) **LAS1-BGQ (G025,28,30)** **LAS1-BGQ30-33Y**

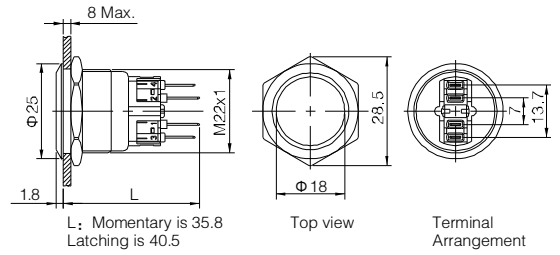
1,2,3,4 are one set; 1,2 are normal closed(NC);3,4 are normal opened(NO). The standard LED terminals have no difference of anode and cathode. The lamp and switch are relatively independent and can use switch or peripheral circuit to control the lamp state.

Switching Operation

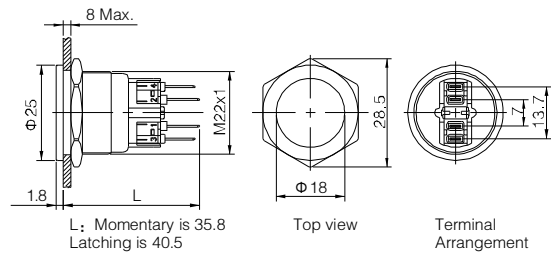




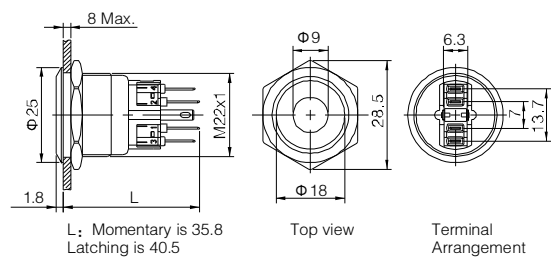
- ⊙ Φ22mm Diameter
- ⊙ Switch Rating:Ith:5A, Ui:250V
- ⊙ Contact Configuration:1NO1NC
- ⊙ Operation Type(■): Momentary /Latching(Z)
- ⊙ The Crust Material(⊙): Stainless steel(S)Anodized(A)
- ⊙ IP Degree: IP65(IP67 made to order),IK10



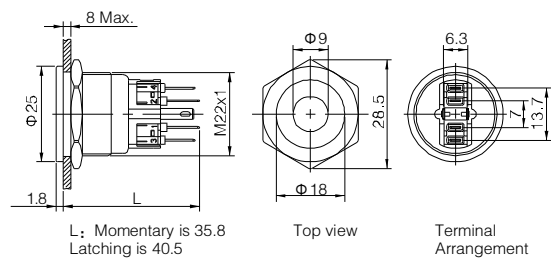
- ⊙ Φ22mm Diameter
- ⊙ Switch Rating:Ith:5A, Ui:250V
- ⊙ Contact Configuration:1NO1NC
- ⊙ Operation Type(■): Momentary /Latching(Z)
- ⊙ The Crust Material(⊙): Stainless steel(S)
- ⊙ IP Degree: IP65(IP67 made to order),IK10



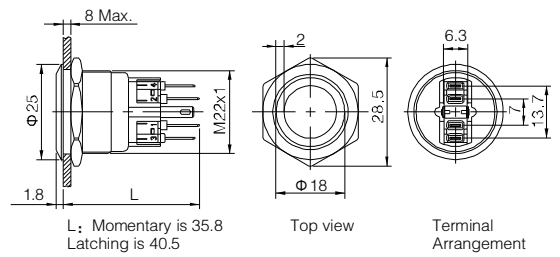
- ⊙ Φ22mm Diameter
- ⊙ Switch Rating:Ith:5A, Ui:250V
- ⊙ Contact Configuration:1NO1NC
- ⊙ Operation Type(■): Momentary /Latching(Z)
- ⊙ LED color(Δ): **R G Y O B W**
- ⊙ LED voltage(▲): 6V/12V/24V/110V/220V
- ⊙ The Crust Material(⊙): Stainless steel(S)Anodized(A)
- ⊙ IP Degree: IP65(IP67 made to order),IK10



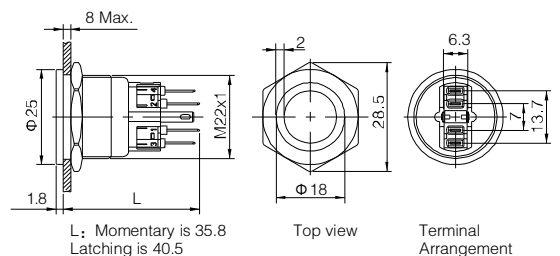
- ⊙ Φ22mm Diameter
- ⊙ Switch Rating:Ith:5A,Ui:250V
- ⊙ Contact Configuration:1NO1NC
- ⊙ Operation Type(■): Momentary /Latching(Z)
- ⊙ LED color(Δ): **R G Y O B W**
- ⊙ LED voltage(▲): 6V/12V/24V/110V/220V
- ⊙ The Crust Material(⊙): Stainless steel(S)
- ⊙ IP Degree: IP65(IP67 made to order),IK10



- ⊙ Φ22mm Diameter
- ⊙ Switch Rating:Ith:5A, Ui:250V
- ⊙ Contact Configuration:1NO1NC
- ⊙ Operation Type(■): Momentary /Latching(Z)
- ⊙ LED color(Δ): **R G Y O B W**
- ⊙ LED voltage(▲): 6V/12V/24V/110V/220V
- ⊙ The Crust Material(⊙): Stainless steel(S)Anodized(A)
- ⊙ IP Degree: IP65(IP67 made to order),IK10

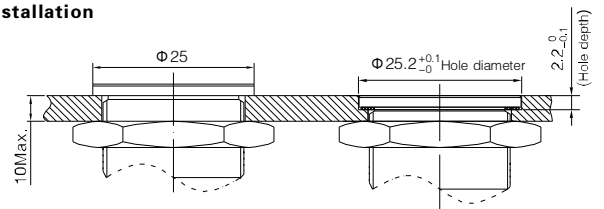


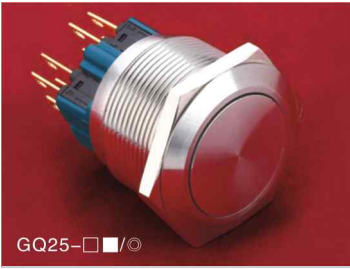
- ⊙ Φ22mm Diameter
- ⊙ Switch Rating:Ith:5A, Ui:250V
- ⊙ Contact Configuration:1NO1NC
- ⊙ Operation Type(■): Momentary /Latching(Z)
- ⊙ LED color(Δ): **R G Y O B W**
- ⊙ LED voltage(▲): 6V/12V/24V/110V/220V
- ⊙ The Crust Material(⊙): Stainless steel(S)
- ⊙ IP Degree: IP65(IP67 made to order),IK10



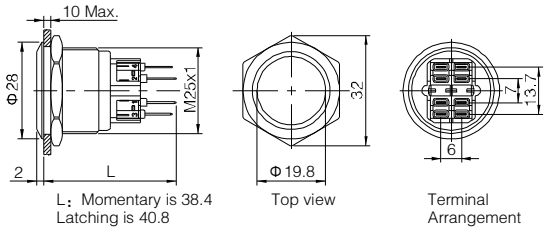
GQ22-11 ■/⊙		GQ22PF-11 ■/⊙	
GQ22-11 ■D/Δ/▲/⊙		GQ22PF-11 ■D/Δ/▲/⊙	
GQ22-11 ■E/Δ/▲/⊙		GQ22PF-11 ■E/Δ/▲/⊙	
Switching	Za(double-break fast-motion changeover contact)	Material	Button Stainless steel/Anodized
Panel Thickness	1 ~ 8mm		Body Stainless steel/Anodized
Mechanical Life	1,000,000 cycles		Base PA
Electrical Life	50,000 cycles	Operation Pressure	About4N
Terminal Type	Pin Terminal(2.8×0.5mm)	Operation Travel	About2.8mm
Torque	1.0Nm	RoHS	Made to order

GQ22Flush Flat Anti-vandal pushbutton Installation

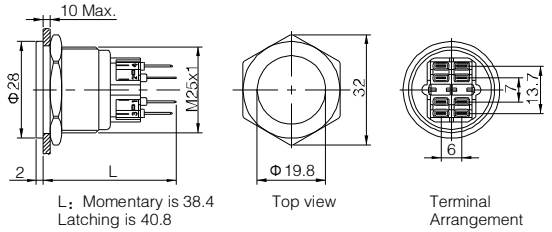




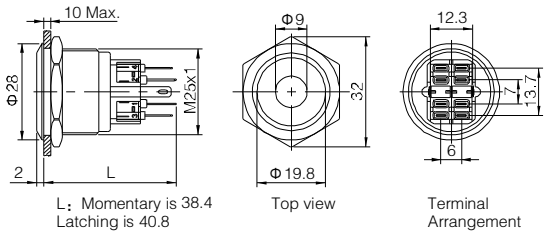
- ⊙ Φ25mm Diameter
- ⊙ Switch Rating: Ith:5A, Ui:250V
- ⊙ Contact Configuration(□): 1NO1NC(11)/2NO2NC(22)
- ⊙ Operation Type(■): Momentary / Latching(Z)
- ⊙ Crust Material(⊙): Stainless steel(S)/Anodized(A)
- ⊙ IP Degree: IP65(IP67made to order) ,IK10



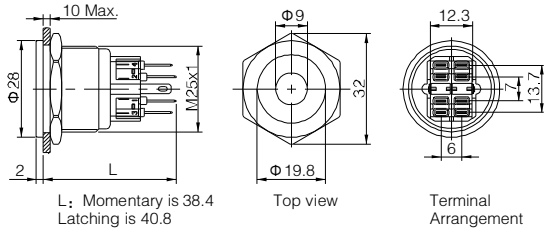
- ⊙ Φ25mm Diameter
- ⊙ Switch Rating: Ith:5A, Ui:250V
- ⊙ Contact Configuration(□): 1NO1NC(11)/2NO2NC(22)
- ⊙ Operation Type(■): Momentary / Latching(Z)
- ⊙ Crust Material(⊙): Stainless steel(S)
- ⊙ IP Degree: IP65(IP67made to order) ,IK10



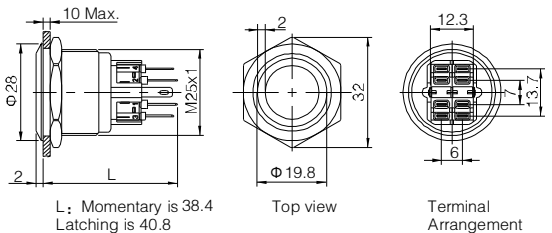
- ⊙ Φ25mm Diameter
- ⊙ Switch Rating: Ith:5A, Ui:250V
- ⊙ Contact Configuration(□): 1NO1NC(11)/2NO2NC(22)
- ⊙ Operation Type(■): Momentary / Latching(Z)
- ⊙ LED Color(Δ): R G Y O B W
- ⊙ LED Voltage(▲): 6V/12V/24V/110V/220V
- ⊙ Crust Material(⊙): Stainless steel(S)/Anodized(A)
- ⊙ IP Degree: IP65(IP67made to order) ,IK10



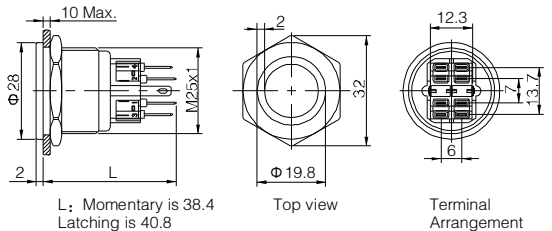
- ⊙ Φ25mm Diameter
- ⊙ Switch Rating: Ith:5A, Ui:250V
- ⊙ Contact Configuration(□): 1NO1NC(11)/2NO2NC(22)
- ⊙ Operation Type(■): Momentary / Latching(Z)
- ⊙ LED Color(Δ): R G Y O B W
- ⊙ LED Voltage(▲): 6V/12V/24V/110V/220V
- ⊙ Crust Material(⊙): Stainless steel(S)
- ⊙ IP Degree: IP65(IP67made to order) ,IK10



- ⊙ Φ25mm Diameter
- ⊙ Switch Rating: Ith:5A, Ui:250V
- ⊙ Contact Configuration(□): 1NO1NC(11)/2NO2NC(22)
- ⊙ Operation Type(■): Momentary / Latching(Z)
- ⊙ LED Color(Δ): R G Y O B W
- ⊙ LED Voltage(▲): 6V/12V/24V/110V/220V
- ⊙ Crust Material(⊙): Stainless steel(S)/Anodized(A)
- ⊙ IP Degree: IP65(IP67made to order) ,IK10

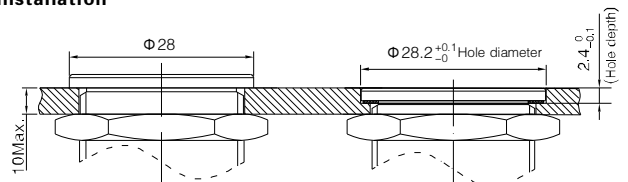


- ⊙ Φ25mm Diameter
- ⊙ Switch Rating: Ith:5A, Ui:250V
- ⊙ Contact Configuration(□): 1NO1NC(11)/2NO2NC(22)
- ⊙ Operation Type(■): Momentary / Latching(Z)
- ⊙ LED Color(Δ): R G Y O B W
- ⊙ LED Voltage(▲): 6V/12V/24V/110V/220V
- ⊙ Crust Material(⊙): Stainless steel(S)
- ⊙ IP Degree: IP65(IP67made to order) ,IK10



GQ25-□■/○		GQ25PF-□■/○	
GQ25-□■D/Δ/▲/○		GQ25PF-□■D/Δ/▲/○	
GQ25-□■E/Δ/▲/○		GQ25PF-□■E/Δ/▲/○	
Switching	Za(double-break fast-motion changeover contact)	Material	Button
Panel Thickness	1 ~ 8mm		Body
Mechanical Life	1,000,000 cycles		Base
Electrical Life	50,000 cycles	Operation Pressure	5.5-7N
Terminal Type	Pin Terminal(2.8 × 0.5mm)	Operation Travel	
Torque	1.2Nm	RoHS	Made to order

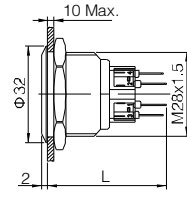
GQ25 Flush Flat Anti-vandal pushbutton Installation



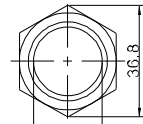


New

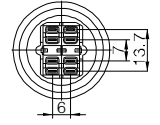
- ⊙ Φ28mm Diameter
- ⊙ Switch Rating: Ith:5A, Ui:250V
- ⊙ Contact Configuration(□): 1NO1NC(11)/2NO2NC(22)
- ⊙ Operation Type(■): Momentary / Latching(Z)
- ⊙ Crust Material(◎): Stainless steel(S)
- ⊙ IP Degree: IP65(IP67made to order) ,IK10



L: Momentary is 39.4
Latching is 41.8



Top view

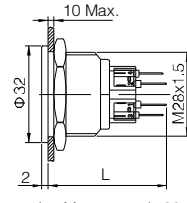


Terminal Arrangement

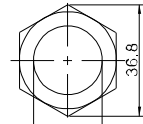


New

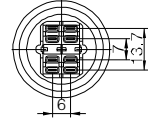
- ⊙ Φ28mm Diameter
- ⊙ Switch Rating: Ith:5A, Ui:250V
- ⊙ Contact Configuration(□): 1NO1NC(11)/2NO2NC(22)
- ⊙ Operation Type(■): Momentary / Latching(Z)
- ⊙ Crust Material(◎): Stainless steel(S)
- ⊙ IP Degree: IP65(IP67made to order) ,IK10



L: Momentary is 39.4
Latching is 41.8



Top view

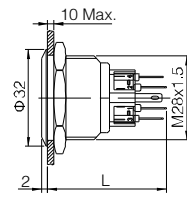


Terminal Arrangement

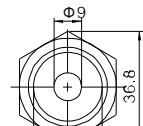


New

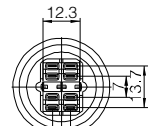
- ⊙ Φ28mm Diameter
- ⊙ Switch Rating: Ith:5A, Ui:250V
- ⊙ Contact Configuration(□): 1NO1NC(11)/2NO2NC(22)
- ⊙ Operation Type(■): Momentary / Latching(Z)
- ⊙ LED Color(△): R G Y O B W
- ⊙ LED Voltage(▲): 6V/12V/24V/110V/220V
- ⊙ Crust Material(◎): Stainless steel(S)
- ⊙ IP Degree: IP65(IP67made to order) ,IK10



L: Momentary is 39.4
Latching is 41.8



Top view

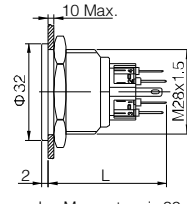


Terminal Arrangement

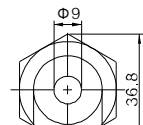


New

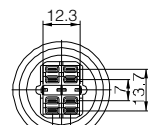
- ⊙ Φ28mm Diameter
- ⊙ Switch Rating: Ith:5A, Ui:250V
- ⊙ Contact Configuration(□): 1NO1NC(11)/2NO2NC(22)
- ⊙ Operation Type(■): Momentary / Latching(Z)
- ⊙ LED Color(△): R G Y O B W
- ⊙ LED Voltage(▲): 6V/12V/24V/110V/220V
- ⊙ Crust Material(◎): Stainless steel(S)
- ⊙ IP Degree: IP65(IP67made to order) ,IK10



L: Momentary is 39.4
Latching is 41.8



Top view

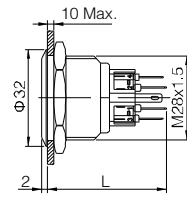


Terminal Arrangement

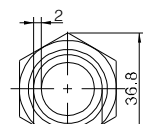


New

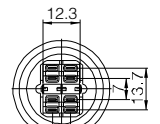
- ⊙ Φ28mm Diameter
- ⊙ Switch Rating: Ith:5A, Ui:250V
- ⊙ Contact Configuration(□): 1NO1NC(11)/2NO2NC(22)
- ⊙ Operation Type(■): Momentary / Latching(Z)
- ⊙ LED Color(△): R G Y O B W
- ⊙ LED Voltage(▲): 6V/12V/24V/110V/220V
- ⊙ Crust Material(◎): Stainless steel(S)
- ⊙ IP Degree: IP65(IP67made to order) ,IK10



L: Momentary is 38.4
Latching is 40.8



Top view

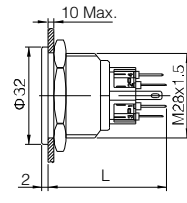


Terminal Arrangement

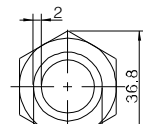


New

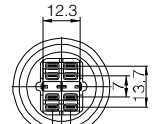
- ⊙ Φ28mm Diameter
- ⊙ Switch Rating: Ith:5A, Ui:250V
- ⊙ Contact Configuration(□): 1NO1NC(11)/2NO2NC(22)
- ⊙ Operation Type(■): Momentary / Latching(Z)
- ⊙ LED Color(△): R G Y O B W
- ⊙ LED Voltage(▲): 6V/12V/24V/110V/220V
- ⊙ Crust Material(◎): Stainless steel(S)
- ⊙ IP Degree: IP65(IP67made to order) ,IK10



L: Momentary is 38.4
Latching is 40.8



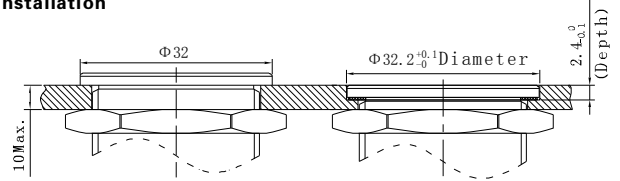
Top view



Terminal Arrangement

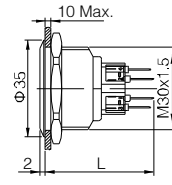
GQ28-□■/○		GQ28PF-□■/○		
GQ28-□■D/△/▲/○		GQ28PF-□■D/△/▲/○		
GQ28-□■E/△/▲/○		GQ28PF-□■E/△/▲/○		
Switching	Za(double-break fast-motion changeover contact)	Material	Button	Stainless steel
Panel Thickness	1 ~ 8mm		Body	Stainless steel
Mechanical Life	1,000,000 cycles		Base	PA
Electrical Life	50,000 cycles	Operation Pressure	5.5-7N	
Terminal Type	Pin Terminal(2.8 × 0.5mm)	Operation Travel	About 2.8mm	
Torque	1.4Nm	RoHS	Made to order	

GQ28 Flush Flat Anti-vandal Pushbutton Installation

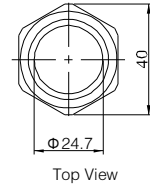




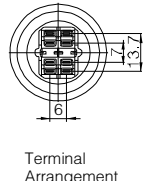
- ⊙ Φ30mm Diameter
- ⊙ Switch Rating: Ith:5A, Ui:250V
- ⊙ Contact Configuration(□): 1NO1NC(11)/2NO2NC(22)
- ⊙ Operation Type(■): Momentary / Latching(Z)
- ⊙ Crust Material(⊙): Stainless steel(S)
- ⊙ IP Degree: IP65(IP67made to order) ,IK10



L: Momentary is 39.4
Latching is 41.8



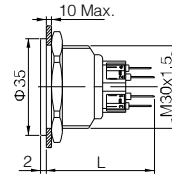
Top View



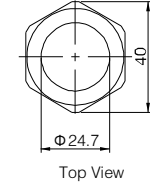
Terminal Arrangement



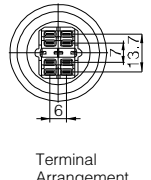
- ⊙ Φ30mm Diameter
- ⊙ Switch Rating: Ith:5A, Ui:250V
- ⊙ Contact Configuration(□): 1NO1NC(11)/2NO2NC(22)
- ⊙ Operation Type(■): Momentary / Latching(Z)
- ⊙ Crust Material(⊙): Stainless steel(S)
- ⊙ IP Degree: IP65(IP67made to order) ,IK10



L: Momentary is 39.4
Latching is 41.8



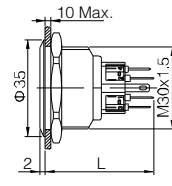
Top View



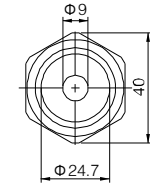
Terminal Arrangement



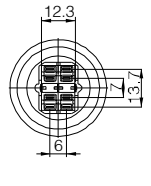
- ⊙ Φ30mm Diameter
- ⊙ Switch Rating: Ith:5A, Ui:250V
- ⊙ Contact Configuration(□): 1NO1NC(11)/2NO2NC(22)
- ⊙ Operation Type(■): Momentary / Latching(Z)
- ⊙ LED Color(△): R G Y O B W
- ⊙ LED Voltage(▲): 6V/12V/24V/110V/220V
- ⊙ Crust Material(⊙): Stainless steel(S)
- ⊙ IP Degree: IP65(IP67made to order) ,IK10



L: Momentary is 39.4
Latching is 41.8



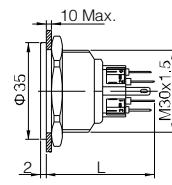
Top View



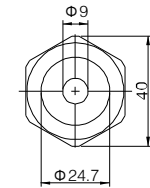
Terminal Arrangement



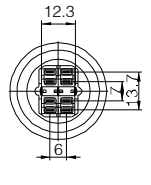
- ⊙ Φ30mm Diameter
- ⊙ Switch Rating: Ith:5A, Ui:250V
- ⊙ Contact Configuration(□): 1NO1NC(11)/2NO2NC(22)
- ⊙ Operation Type(■): Momentary / Latching(Z)
- ⊙ LED Color(△): R G Y O B W
- ⊙ LED Voltage(▲): 6V/12V/24V/110V/220V
- ⊙ Crust Material(⊙): Stainless steel(S)
- ⊙ IP Degree: IP65(IP67made to order) ,IK10



L: Momentary is 39.4
Latching is 41.8



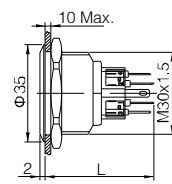
Top View



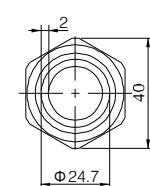
Terminal Arrangement



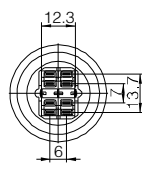
- ⊙ Φ30mm Diameter
- ⊙ Switch Rating: Ith:5A, Ui:250V
- ⊙ Contact Configuration(□): 1NO1NC(11)/2NO2NC(22)
- ⊙ Operation Type(■): Momentary / Latching(Z)
- ⊙ LED Color(△): R G Y O B W
- ⊙ LED Voltage(▲): 6V/12V/24V/110V/220V
- ⊙ Crust Material(⊙): Stainless steel(S)
- ⊙ IP Degree: IP65(IP67made to order) ,IK10



L: Momentary is 38.4
Latching is 40.8



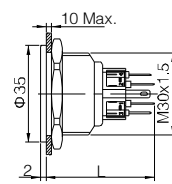
Top View



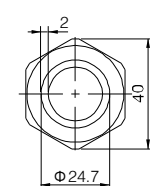
Terminal Arrangement



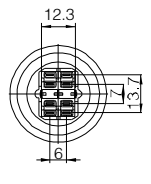
- ⊙ Φ30mm Diameter
- ⊙ Switch Rating: Ith:5A, Ui:250V
- ⊙ Contact Configuration(□): 1NO1NC(11)/2NO2NC(22)
- ⊙ Operation Type(■): Momentary / Latching(Z)
- ⊙ LED Color(△): R G Y O B W
- ⊙ LED Voltage(▲): 6V/12V/24V/110V/220V
- ⊙ Crust Material(⊙): Stainless steel(S)
- ⊙ IP Degree: IP65(IP67made to order) ,IK10



L: Momentary is 38.4
Latching is 40.8



Top View



Terminal Arrangement

GQ30F-□■/○		GQ30PF-□■/○		
GQ30F-□■D/△/▲/○		GQ30PF-□■D/△/▲/○		
GQ30F-□■E/△/▲/○		GQ30PF-□■E/△/▲/○		
Switching	Za(double-break fast-motion changeover contact)	Material	Button	Stainless steel
Panel Thickness	1 ~ 8mm		Body	Stainless steel
Mechanical Life	1,000,000 cycles		Base	PA
Electrical Life	50,000 cycles		Operation Pressure	5.5-7N
Terminal Type	Pin Terminal(2.8 × 0.5mm)		Operation Travel	About 2.8mm
Torque	1.6Nm	RoHS		Made to order

Gq30 Flush Flat Anti-vandal Pushbutton Installation

