

GQ19

Metal Push Button



Part-number Description

GQ19	※	★	□	◇	◆	△	▲	◎
Code of series	Product structure S Short type No letter means standard type	The Front shape B Domed F Flat Round H High Round PF Super Flat Head+ Flat Button PH Super Flat Head+ High Flat Button	Contact structure 10 1NO 01 1NC 1NC can be made to order for some products No letter means signal lamp	Lamp type D Dot E Ring	Connet type J Pin terminal No letter means screw terminal	Lamp color and colorized button R Red G Green Y Yellow O Orange B Blue W White N Black	Lamp voltage AC/DC 6V AC/DC 12V AC/DC 24V AC/DC 36V Note: Other voltage can be made to order	Crust material N Nickel-plated Brass S Stainless steel A Stainless steel Cr Chrome-plated (made to order)

Note: Pls read the catalogue carefully, and choose the right part-number according to the sign.

Specifications

Operating Temperature	-25°C~+55°C(no freezing) keep the air flowing around illuminated pushbutton
Operating Humidity	45~85%RH(no condensation)
Contact Resistance	≤50mΩ
Insulation Resistance	≥1000MΩ
Dielectric Strength	2000V, A C50Hz, 5 seconds
Vibration Resistance	50Hz, Amplitude 1.2mm
Shock Resistance	> 10g
Solder Heat Resistance	320°C(or 30W soldering iron) no more than 2 seconds)

Standard and Certification

Standard	Certification Mark	Certificate Authority/Certification Number
EN61058-1:2002+A2:2008	CE	VOV/VT11018807
EN60947-1:2004	CE	CTS/CTS070706-01006-E

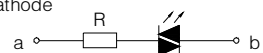
Switching Operation

Type	X	Y
Sign		
Diagram		

Note: Using two terminals, double-break and slow-motion contact
Y type NC switch can be made to order for individual product, pls check the product description.

Lamp Ratings

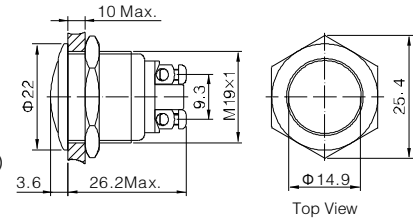
Lamp Type	LED lamp(AC/DC)
Led Color	R G Y O B W
Life	40000 hours (Reference)
Rated Voltage	AC/DC6V, AC/DC12V, AC/DC24V, AC/DC36V
Rated Current	About 15mA
DroppingWay	External resistance
Lamp Circuit Diagram	Using AC/DCLed lamp, the terminals have no difference of anode and cathode



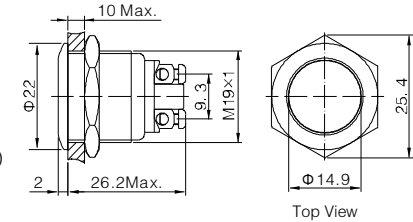
Note: DC LED and other voltage can be made to order.



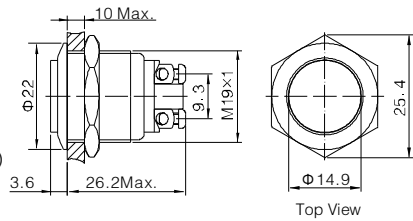
- ⊙ Φ 19mm Diameter
- ⊙ Switch Rating: 2A/36VDC
- ⊙ Contact Configuration: 1NO
- ⊙ Operation Type: Momentary
- ⊙ The Front Shape: Domed
- ⊙ The Crust Material: (⊙): Stainless steel(S)/
Nickel plated Brass(N)/Black anodized aluminium alloy(A)
- ⊙ IP Degree: IP65,IK09



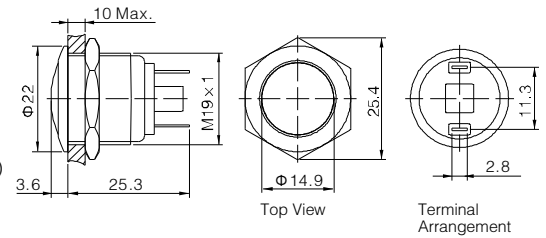
- ⊙ Φ 19mm Diameter
- ⊙ Switch Rating: 2A/36VDC
- ⊙ Contact Configuration: 1NO
- ⊙ Operation Type: Momentary
- ⊙ The Front Shape: Flat round
- ⊙ The Crust Material: (⊙): Stainless steel(S)/
Nickel plated Brass(N)/Black anodized aluminium alloy(A)
- ⊙ IP Degree: IP65,IK09



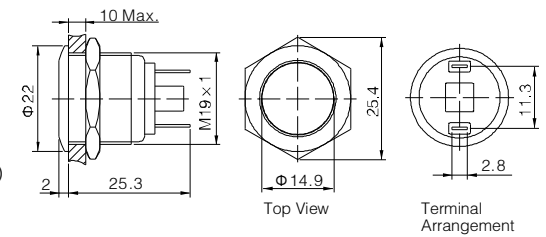
- ⊙ Φ 19mm Diameter
- ⊙ Switch Rating: 2A/36VDC
- ⊙ Contact Configuration: 1NO
- ⊙ Operation Type: Momentary
- ⊙ The Front Shape: High round
- ⊙ The Crust Material: (⊙): Stainless steel(S)/
Nickel plated Brass(N)/Black anodized aluminium alloy(A)
- ⊙ IP Degree: IP65,IK09



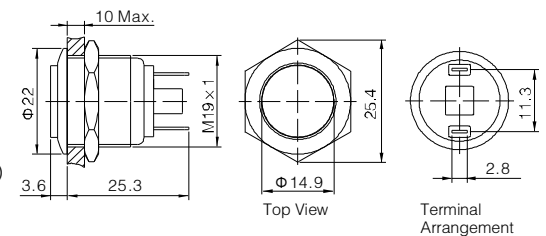
- ⊙ Φ 19mm Diameter
- ⊙ Switch Rating: 2A/36VDC
- ⊙ Contact Configuration: 1NO
- ⊙ Operation Type: Momentary
- ⊙ The Front Shape: Domed
- ⊙ The Crust Material: (⊙): Stainless steel(S)/
Nickel plated Brass(N)/Black anodized aluminium alloy(A)
- ⊙ IP Degree: IP65,IK09



- ⊙ Φ 19mm Diameter
- ⊙ Switch Rating: 2A/36VDC
- ⊙ Contact Configuration: 1NO
- ⊙ Operation Type: Momentary
- ⊙ The Front Shape: Flat round
- ⊙ The Crust Material: (⊙): Stainless steel(S)/
Nickel plated Brass(N)/Black anodized aluminium alloy(A)
- ⊙ IP Degree: IP65,IK09



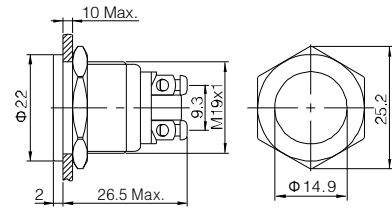
- ⊙ Φ 19mm Diameter
- ⊙ Switch Rating: 2A/36VDC
- ⊙ Contact Configuration: 1NO
- ⊙ Operation Type: Momentary
- ⊙ The Front Shape: High round
- ⊙ The Crust Material: (⊙): Stainless steel(S)/
Nickel plated Brass(N)/Black anodized aluminium alloy(A)
- ⊙ IP Degree: IP65,IK09



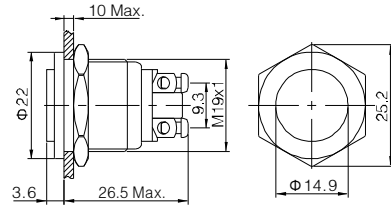
GQ19B-10/⊙ GQ19F-10/⊙ GQ19H-10/⊙		Material	Button	Stainless steel	GQ19B-10/J/⊙ GQ19F-10/J/⊙ GQ19H-10/J/⊙		Material	Button	Stainless steel
Terminal Type	Screw Terminal <th>Body</th> <td>Stainless steel/Nickel-plated brass</td> <th>Terminal Type</th> <td>Pin terminal(2.8 × 0.5mm)</td> <th>Body</th> <td>Stainless steel/Nickel-plated brass</td>		Body	Stainless steel/Nickel-plated brass	Terminal Type	Pin terminal(2.8 × 0.5mm)		Body	Stainless steel/Nickel-plated brass
Switching	x(double-break slow-motion contact)		Base	PBT	Operation Pressure	About 4N		Base	PBT
Panel Thickness	1 ~ 6mm	Operation Pressure	About 4N	Operation Travel	About 2.5mm	Switching	x(double-break slow-motion contact)	Operation Travel	About 2.5mm
Torque	0.8Nm	Panel Thickness	1 ~ 6mm	Torque	0.8Nm	Mechanical Life	1,000,000 cycles	Mechanical Life	1,000,000 cycles
Mechanical Life	1,000,000 cycles	Electrical Life	200,000 cycles	RoHS	Made to order	Electrical Life	200,000 cycles	RoHS	Made to order



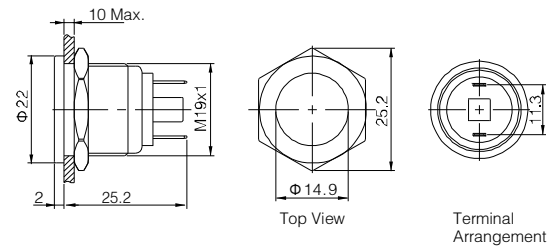
- ⊙ Φ 19mm Diameter
- ⊙ Switch Rating: 2A/36VDC
- ⊙ Contact Configuration: 1NO
- ⊙ Operation Type: Momentary
- ⊙ The Front Shape: Flat round
- ⊙ The Crust Material: (⊙): Stainless steel(S)/
Nickel plated Brass(N)
- ⊙ IP Degree: IP65,IK09



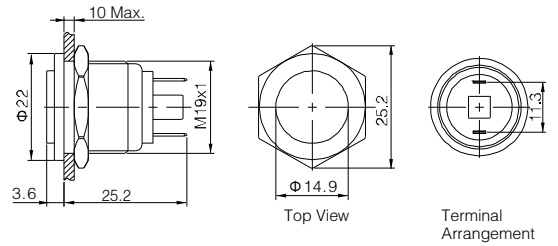
- ⊙ Φ 19mm Diameter
- ⊙ Switch Rating: 2A/36VDC
- ⊙ Contact Configuration: 1NO
- ⊙ Operation Type: Momentary
- ⊙ The Front Shape: High round
- ⊙ The Crust Material: (⊙): Stainless steel(S)/
Nickel plated Brass(N)
- ⊙ IP Degree: IP65,IK09



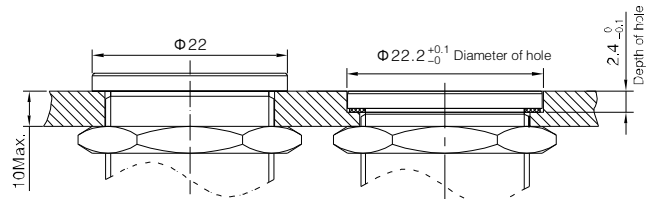
- ⊙ Φ 19mm Diameter
- ⊙ Switch Rating: 2A/36VDC
- ⊙ Contact Configuration: 1NO
- ⊙ Operation Type: Momentary
- ⊙ The Front Shape: Flat round
- ⊙ The Crust Material: (⊙): Stainless steel(S)/
Nickel plated Brass(N)
- ⊙ IP Degree: IP65,IK09



- ⊙ Φ 19mm Diameter
- ⊙ Switch Rating: 2A/36VDC
- ⊙ Contact Configuration: 1NO
- ⊙ Operation Type: Momentary
- ⊙ The Front Shape: High round
- ⊙ The Crust Material: (⊙): Stainless steel(S)/
Nickel plated Brass(N)
- ⊙ IP Degree: IP65,IK09



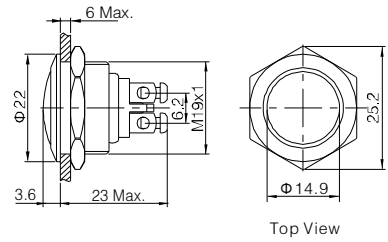
Installation of GQ19 super flat switch



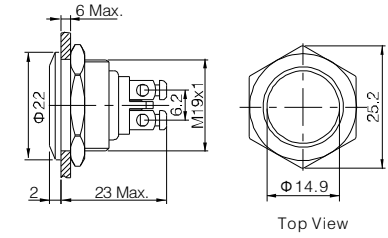
GQ19PF-10/⊙ GQ19PH-10/⊙		Material	Button	Stainless steel	GQ19PF-10/J/⊙ GQ19PH-10/J/⊙		Material	Button	Stainless steel
Terminal Type	Screw terminal		Body	Stainless steel/Nickel-plated brass	Terminal Type	Pin terminal(2.8 × 0.5mm)		Body	Stainless steel/Nickel-plated brass
	Switching		x(double-break slow-motion contact)	Base		PBT		Switching	x(double-break slow-motion contact)
Operation Pressure	About 4N	Operation Travel	About 2.5mm	Operation Pressure	About 4N	Operation Travel	About 2.5mm		
Panel Thickness	1 ~ 6mm	Torque	0.8Nm	Panel Thickness	1 ~ 6mm	Torque	0.8Nm		
Mechanical Life	1,000,000 cycles	Electrical Life	200,000 cycles	Mechanical Life	1,000,000 cycles	Electrical Life	200,000 cycles		
		RoHS	Made to order			RoHS	Made to order		



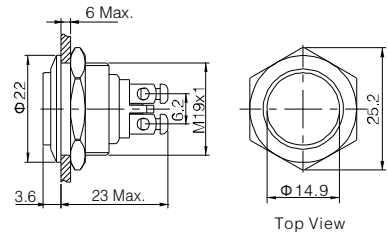
- ⊙ Φ 19mm Diameter
- ⊙ Switch Rating: 2A/36VDC
- ⊙ Contact Configuration: 1NO(1NC can be made to order)
- ⊙ **Structure feature: short afterbody**
- ⊙ Operation Type: Momentary
- ⊙ The Front Shape: Domed
- ⊙ The Crust Material: (⊙): Stainless steel(S)/ Nickel plated Brass(N)
- ⊙ IP Degree: IP65,IK09



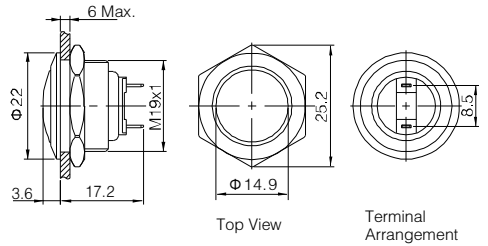
- ⊙ Φ 19mm Diameter
- ⊙ Switch Rating: 2A/36VDC
- ⊙ Contact Configuration: 1NO(1NC can be made to order)
- ⊙ **Structure feature: short afterbody**
- ⊙ Operation Type: Momentary
- ⊙ The Front Shape: Flat round
- ⊙ The Crust Material: (⊙): Stainless steel(S)/ Nickel plated Brass(N)
- ⊙ IP Degree: IP65,IK09



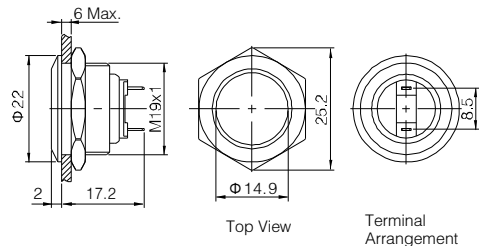
- ⊙ Φ 19mm Diameter
- ⊙ Switch Rating: 2A/36VDC
- ⊙ Contact Configuration: 1NO(1NC can be made to order)
- ⊙ **Structure feature: short afterbody**
- ⊙ Operation Type: Momentary
- ⊙ The Front Shape: High round
- ⊙ The Crust Material: (⊙): Stainless steel(S)/ Nickel plated Brass(N)
- ⊙ IP Degree: IP65,IK09



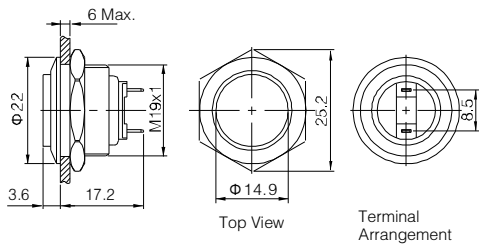
- ⊙ Φ 19mm Diameter
- ⊙ Switch Rating: 2A/36VDC
- ⊙ Contact Configuration: 1NO(1NC can be made to order)
- ⊙ **Structure feature: short afterbody**
- ⊙ Operation Type: Momentary
- ⊙ The Front Shape: Domed
- ⊙ The Crust Material: (⊙): Stainless steel(S)/ Nickel plated Brass(N)
- ⊙ IP Degree: IP65,IK09



- ⊙ Φ 19mm Diameter
- ⊙ Switch Rating: 2A/36VDC
- ⊙ Contact Configuration: 1NO(1NC can be made to order)
- ⊙ **Structure feature: short afterbody**
- ⊙ Operation Type: Momentary
- ⊙ The Front Shape: Flat round
- ⊙ The Crust Material: (⊙): Stainless steel(S)/ Nickel plated Brass(N)
- ⊙ IP Degree: IP65,IK09



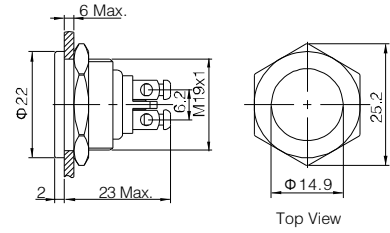
- ⊙ Φ 19mm Diameter
- ⊙ Switch Rating: 2A/36VDC
- ⊙ Contact Configuration: 1NO(1NC can be made to order)
- ⊙ **Structure feature: short afterbody**
- ⊙ Operation Type: Momentary
- ⊙ The Front Shape: High round
- ⊙ The Crust Material: (⊙): Stainless steel(S)/ Nickel plated Brass(N)
- ⊙ IP Degree: IP65,IK09



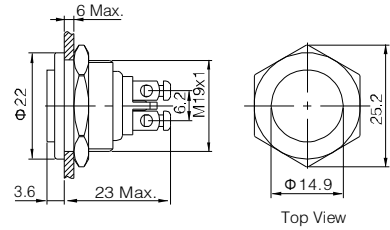
GQ19SB-10/0 GQ19SF-10/0 GQ19SH-10/0		Material	Lamp Cover	Stainless steel	GQ19SB-10/J/0 GQ19SF-10/J/0 GQ19SH-10/J/0		Material	Lamp Cover	Stainless steel
			Body	Stainless steel/Nickel-plated brass				Body	Stainless steel/Nickel-plated brass
		Base	PBT			Base	PBT		
Terminal Type	Screw Terminal	Operation Pressure	About 4N	Terminal Type	Pin Terminal	Operation Pressure	About 4N		
Switching	x(double-break slow-motion contact)	Operation Travel	About 2.5mm	Switching	x(double-break slow-motion contact)	Operation Travel	About 2.5mm		
Panel Thickness	1 ~ 6mm			Panel Thickness	1 ~ 6mm				
Torque	0.8Nm			Torque	0.8Nm				
Mechanical Life	1,000,000 cycles			Mechanical Life	1,000,000 cycles				
Electrical Life	200,000 cycles	RoHS	Made to order	Electrical Life	200,000 cycles	RoHS	Made to order		



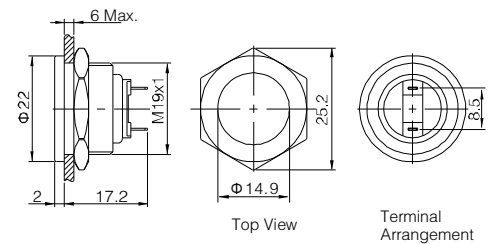
- ⊙ Φ 19mm Diameter
- ⊙ Switch Rating: 2A/36VDC
- ⊙ Contact Configuration: 1NO(1NC can be made to order)
- ⊙ **Structure feature: short afterbody**
- ⊙ Operation Type: Momentary
- ⊙ The Front Shape: Flat round
- ⊙ The Crust Material: (⊙): Stainless steel(S)/
Black anodized aluminium alloy(A)
- ⊙ IP Degree: IP65, IK09



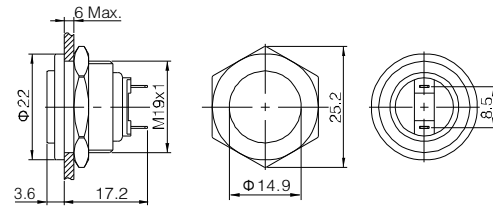
- ⊙ Φ 19mm Diameter
- ⊙ Switch Rating: 2A/36VDC
- ⊙ Contact Configuration: 1NO(1NC can be made to order)
- ⊙ **Structure feature: short afterbody**
- ⊙ Operation Type: Momentary
- ⊙ The Front Shape: High round
- ⊙ The Crust Material: (⊙): Stainless steel(S)/
Black anodized aluminium alloy(A)
- ⊙ IP Degree: IP65, IK09



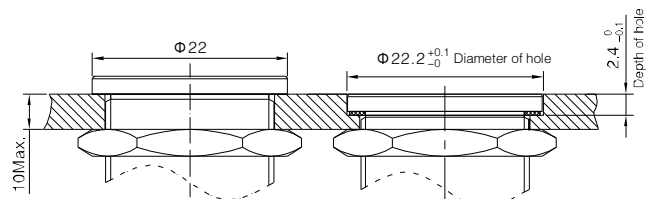
- ⊙ Φ 19mm Diameter
- ⊙ Switch Rating: 2A/36VDC
- ⊙ Contact Configuration: 1NO(1NC can be made to order)
- ⊙ **Structure feature: short afterbody**
- ⊙ Operation Type: Momentary
- ⊙ The Front Shape: Flat round
- ⊙ The Crust Material: (⊙): Stainless steel(S)/
Black anodized aluminium alloy(A)
- ⊙ IP Degree: IP65, IK09



- ⊙ Φ 19mm Diameter
- ⊙ Switch Rating: 2A/36VDC
- ⊙ Contact Configuration: 1NO(1NC can be made to order)
- ⊙ **Structure feature: short afterbody**
- ⊙ Operation Type: Momentary
- ⊙ The Front Shape: High round
- ⊙ The Crust Material: (⊙): Stainless steel(S)/
Black anodized aluminium alloy(A)
- ⊙ IP Degree: IP65, IK09



Installation of GQ19 super flat switch

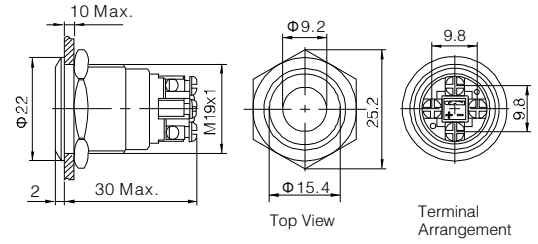


GQ19SPF-10/⊙ GQ19SPH-10/⊙		Material	Lamp Cover	Stainless steel	GQ19SPF-10/J/⊙ GQ19SPH-10/J/⊙		Material	Lamp Cover	Stainless steel
Terminal Type	Screw Terminal <th>Body</th> <td>Stainless steel</td> <th rowspan="2">Terminal Type</th> <td>Pin Terminal <th>Body</th> <td>Stainless steel</td> </td>		Body	Stainless steel	Terminal Type	Pin Terminal <th>Body</th> <td>Stainless steel</td>		Body	Stainless steel
	Switching		x(double-break slow-motion contact) <th>Base</th> <td>PBT</td> <th>Switching</th> <td>x(double-break slow-motion contact) <th>Base</th> <td>PBT</td> </td>	Base		PBT		Switching	x(double-break slow-motion contact) <th>Base</th> <td>PBT</td>
Operation Pressure	About 4N	Operation Pressure	About 4N	Operation Pressure	About 4N	Operation Pressure	About 4N		
Operation Travel	About 2.5mm	Operation Travel	About 2.5mm	Operation Travel	About 2.5mm	Operation Travel	About 2.5mm		
Panel Thickness	1 ~ 6mm	Panel Thickness	1 ~ 6mm	Panel Thickness	1 ~ 6mm	Panel Thickness	1 ~ 6mm		
Torque	0.8Nm	Torque	0.8Nm	Torque	0.8Nm	Torque	0.8Nm		
Mechanical Life	1,000,000 cycles	Mechanical Life	1,000,000 cycles	Mechanical Life	1,000,000 cycles	Mechanical Life	1,000,000 cycles		
Electrical Life	200,000 cycles	RoHS	Made to order	Electrical Life	200,000 cycles	RoHS	Made to order		



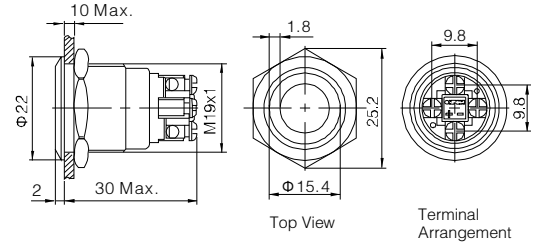
GQ19F-10D/Δ/▲/S

- ⊙ Indicator part number: GQ19F-D/Δ/▲/S
- ⊙ Φ 19mm Diameter
- ⊙ Switch Rating: 2A/36VDC
- ⊙ Contact Configuration: 1NO
- ⊙ Operation Type: Momentary
- ⊙ LED Color(Δ): **R G Y O B W**
- ⊙ LED Voltage(▲): 6V/12V/24V/36V/110V/220V
- ⊙ The Crust Material: Stainless steel
- ⊙ IP Degree: IP65,IK08



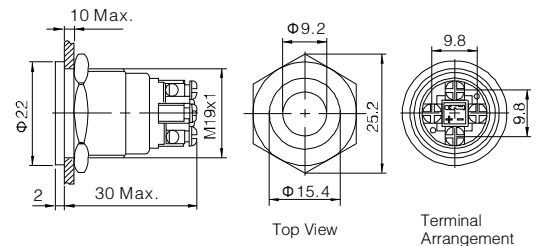
GQ19F-10E/Δ/▲/S

- ⊙ Indicator part number: GQ19F-E/Δ/▲/S
- ⊙ Φ 19mm Diameter
- ⊙ Switch Rating: 2A/36VDC
- ⊙ Contact Configuration: 1NO
- ⊙ Operation Type: Momentary
- ⊙ LED Color(Δ): **R G Y O B W**
- ⊙ LED Voltage(▲): 6V/12V/24V/36V/110V/220V
- ⊙ The Crust Material: Stainless steel
- ⊙ IP Degree: IP65,IK08



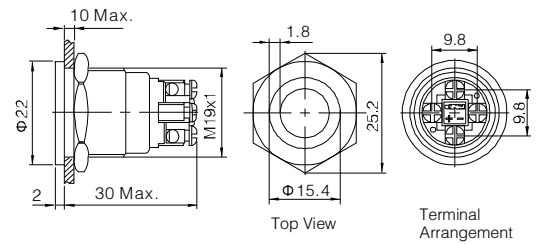
GQ19PF-10D/Δ/▲/S

- ⊙ Indicator part number: GQ19PF-D/Δ/▲/S
- ⊙ Φ 19mm Diameter
- ⊙ Switch Rating: 2A/36VDC
- ⊙ Contact Configuration: 1NO
- ⊙ Operation Type: Momentary
- ⊙ LED Color(Δ): **R G Y O B W**
- ⊙ LED Voltage(▲): 6V/12V/24V/36V/110V/220V
- ⊙ The Crust Material: Stainless steel
- ⊙ IP Degree: IP65,IK08



GQ19PF-10E/Δ/▲/S

- ⊙ Indicator part number: GQ19PF-E/Δ/▲/S
- ⊙ Φ 19mm Diameter
- ⊙ Switch Rating: 2A/36VDC
- ⊙ Contact Configuration: 1NO
- ⊙ Operation Type: Momentary
- ⊙ LED Color(Δ): **R G Y O B W**
- ⊙ LED Voltage(▲): 6V/12V/24V/36V/110V/220V
- ⊙ The Crust Material: Stainless steel
- ⊙ IP Degree: IP65,IK08



GQ19F-10D/Δ/▲/S GQ19F-10E/Δ/▲/S		GQ19PF-10D/Δ/▲/S GQ19PF-10E/Δ/▲/S	
Terminal Type	Screw Terminal	Material	Lamp Cover
Switching	x(double-break slow-motion contact)		Body
Panel Thickness	1 ~ 6mm		Base
Torque	0.8Nm	Operation Pressure	About 4N
Mechanical Life	1,000,000 cycles	Operation Travel	About 2.5mm
Electrical Life	200,000 cycles	RoHS	Made to order

Installation of GQ19 super flat switch

