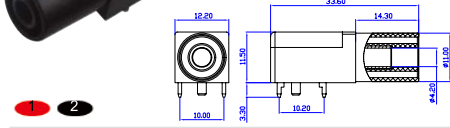


24.245.*



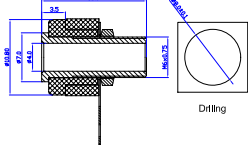
材质 Material
 塑壳 Insulator: PA
 主体 Body: 铜 Brass
 表面 Surface: 镀金 Gold plated
电气性能 Rated voltage/current
 CATIII 1000V/Max.24A



24.246.*



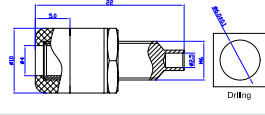
材质 Material
 塑壳 Insulator: ABS
 主体 Body: 铜 Brass
 表面 Surface: 镀镍 Nickel plated
电气性能 Rated voltage/current
 30Vac-60Vdc/Max.19A



24.247.*



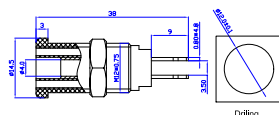
材质 Material
 塑壳 Insulator: ABS
 主体 Body: 铜 Brass
 表面 Surface: 镀镍 Nickel plated
电气性能 Rated voltage/current
 30Vac-60Vdc/Max.24A



24.260.*



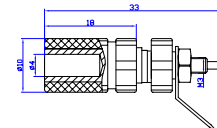
材质 Material
 塑壳 Insulator: PA
 主体 Body: 铜 Brass
 表面 Surface: 镀镍 Nickel plated
电气性能 Rated voltage/current
 CATIII 1000V/Max.32A



24.824.*



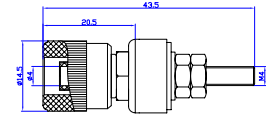
材质 Material
 塑壳 Insulator: ABS
 主体 Body: 铜 Brass
 表面 Surface: 镀镍 Nickel plated
电气性能 Rated voltage/current
 30Vac-60Vdc/Max.24A



24.828.*



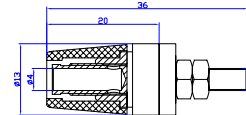
材质 Material
 塑壳 Insulator: ABS
 主体 Body: 铜 Brass
 表面 Surface: 镀镍 Nickel plated
电气性能 Rated voltage/current
 30Vac-60Vdc/Max.24A



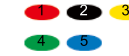
24.825.*



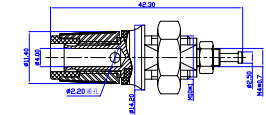
材质 Material
 塑壳 Insulator: ABS
 主体 Body: 铜 Brass
 表面 Surface: 镀镍 Nickel plated
电气性能 Rated voltage/current
 30Vac-60Vdc/Max.24A



24.829.*



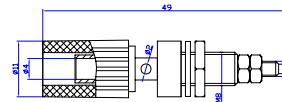
材质 Material
 塑壳 Insulator: PA
 主体 Body: 铜 Brass
 表面 Surface: 镀镍 Nickel plated
电气性能 Rated voltage/current
 30Vac-60Vdc/Max.24A



24.826.*



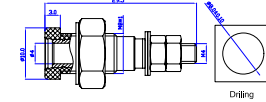
材质 Material
 塑壳 Insulator: ABS
 主体 Body: 铜 Brass
 表面 Surface: 镀镍 Nickel plated
电气性能 Rated voltage/current
 30Vac-60Vdc/Max.19A



24.830.*



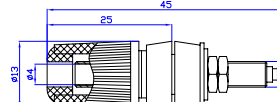
材质 Material
 塑壳 Insulator: ABS
 主体 Body: 铜 Brass
 表面 Surface: 镀镍 Nickel plated
电气性能 Rated voltage/current
 30Vac-60Vdc/Max.24A



24.827.*



材质 Material
 塑壳 Insulator: ABS
 主体 Body: 铜 Brass
 表面 Surface: 镀镍 Nickel plated
电气性能 Rated voltage/current
 30Vac-60Vdc/Max.24A



24.831.*



材质 Material
 塑壳 Insulator: ABS
 主体 Body: 铜 Brass
 表面 Surface: 镀镍 Nickel plated
电气性能 Rated voltage/current
 30Vac-60Vdc/Max.24A

