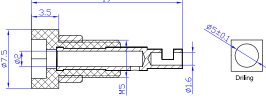


24.101.\*



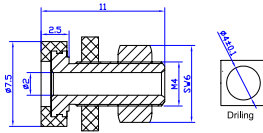
**材质 Material**  
 塑壳 Insulator: PA  
 主体 Body: 铜 Brass  
 表面 Surface: 镀金 Gold plated  
 电气性能 Rated voltage/current  
 30Vac-60Vdc/Max.10A



24.106.\*



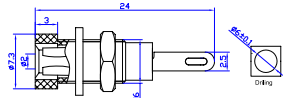
**材质 Material**  
 塑壳 Insulator: ABS  
 主体 Body: 铜 Brass  
 表面 Surface: 镀镍 Nickel plated  
 电气性能 Rated voltage/current  
 30Vac-60Vdc/Max.10A



24.102.\*



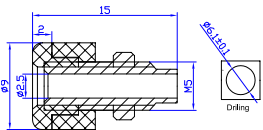
**材质 Material**  
 塑壳 Insulator: ABS  
 主体 Body: 铜 Brass  
 表面 Surface: 镀镍 Nickel plated  
 电气性能 Rated voltage/current  
 30Vac-60Vdc/Max.6A



24.107.\*



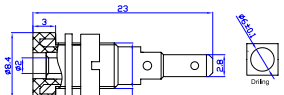
**材质 Material**  
 塑壳 Insulator: ABS  
 主体 Body: 铜 Brass  
 表面 Surface: 镀镍 Nickel plated  
 电气性能 Rated voltage/current  
 30Vac-60Vdc/Max.10A



24.103.\*



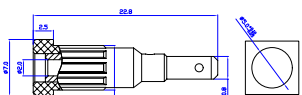
**材质 Material**  
 塑壳 Insulator: PA  
 主体 Body: 铜 Brass  
 表面 Surface: 镀镍 Nickel plated  
 电气性能 Rated voltage/current  
 30Vac-60Vdc/Max.10A



24.110.\*



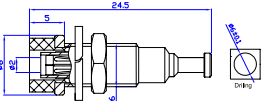
**材质 Material**  
 塑壳 Insulator: PA  
 主体 Body: 铜 Brass  
 表面 Surface: 镀金 Gold plated  
 电气性能 Rated voltage/current  
 30Vac-60Vdc/Max.10A



24.104.\*



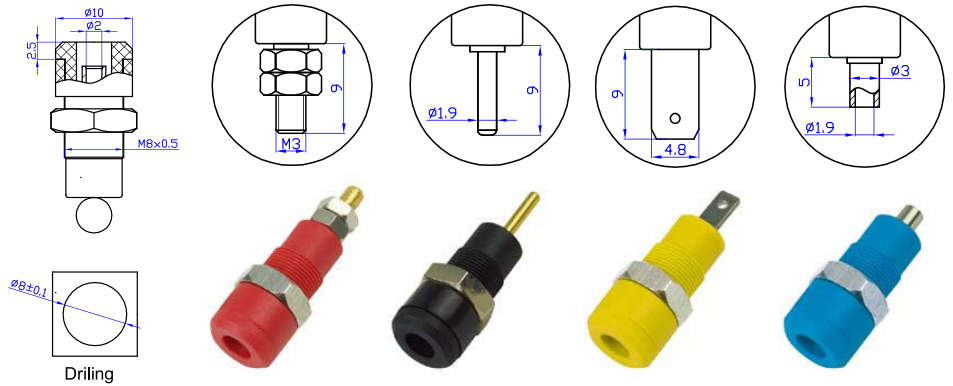
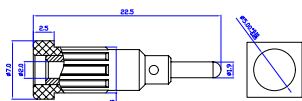
**材质 Material**  
 塑壳 Insulator: PA  
 主体 Body: 铜 Brass  
 表面 Surface: 镀镍 Nickel plated  
 电气性能 Rated voltage/current  
 30Vac-60Vdc/Max.10A



24.111.\*



**材质 Material**  
 塑壳 Insulator: PA  
 主体 Body: 铜 Brass  
 表面 Surface: 镀金 Gold plated  
 电气性能 Rated voltage/current  
 30Vac-60Vdc/Max.10A



24.131.\*

24.132.\*

24.133.\*

24.134.\*

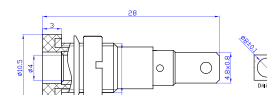
型号 Model.	材质 Material	电气性能 Rated voltage/current
24.131.*	塑壳 Insulator: PA	CATIII 600V/Max.10A
24.132.*	主体 Body: 铜 Brass	
24.133.*	表面 Surface: 镀镍或镀金	
24.134.*	Nickel or Gold plated	



24.241.\*



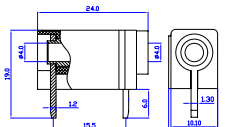
**材质 Material**  
 塑壳 Insulator: PA  
 主体 Body: 铜 Brass  
 表面 Surface: 镀镍 Nickel plated  
 电气性能 Rated voltage/current  
 30Vac-60Vdc/Max.24A



24.243.\*



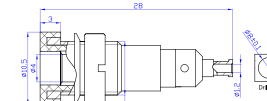
**材质 Material**  
 塑壳 Insulator: PA  
 主体 Body: 铜 Brass  
 表面 Surface: 镀银 Silver plated  
 电气性能 Rated voltage/current  
 30Vac-60Vdc/Max.24A



24.242.\*



**材质 Material**  
 塑壳 Insulator: PA  
 主体 Body: 铜 Brass  
 表面 Surface: 镀镍 Nickel plated  
 电气性能 Rated voltage/current  
 30Vac-60Vdc/Max.24A



24.244.\*



**材质 Material**  
 塑壳 Insulator: ABS  
 主体 Body: 铜 Brass  
 表面 Surface: 镀锌 Zinc plated  
 电气性能 Rated voltage/current  
 30Vac-60Vdc/Max.24A

