

GQ12

Metal Push Button



Part-number Description

GQ12	★	□	◇	◆	△	▲	◎
Code of series	Code of series B Domed S Square	Contact structure 10 1NO No letter means signal lamp	Lamp type D Dot	Connet type J Pin terminal No letter means screw terminal	Lamp color and colored button R Red G Green Y Yellow O Orange B Blue W White N Black	Lamp voltage AC/DC 6V AC/DC 12V AC/DC 24V AC/DC 36V Note: Other voltage can be made to order	Crust material N Nickel-plated Brass S Stainless steel A Zn-Al alloy (black) T Zn-Al (silvery white) Cr Chrome-plated (made to order)

Note: Pls read the catalogue carefully, and choose the right part-number according to the sig

Specifications

Operating Temperature	-25°C~+55°C(no freezing) keep the air flowing around illuminated pushbutton
Operating Humidity	45~85%RH(no condensation)
Contact Resistance	≤50mΩ
Insulation Resistance	≥1000MΩ
Dielectric Strength	1500V,A C50Hz,5 seconds
Vibration Resistance	50Hz,Amplitude 1.2mm
Shock Resistance	> 10g
Solder Heat Resistance	320°C(or 30W soldering iron) no more than 2 seconds)

Standard and Certification

Standard	Certification Mark	Certificate Authority /Certification Number
EN61058-1:2002+A2:2008	CE	VOV/VT11018807
EN60947-1:2004		CTS/CTS070706-01006-E

Switching Operation

Type	X
Sign	
Diagram	
Note: Using two terminals, double-break and slow-motion contact.	

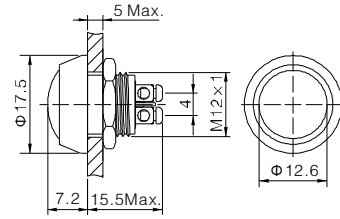
Lamp Ratings

Lamp Type	LED lamp(AC/DC)
Led Color	R G Y O B W
Life	40000 hours (Reference)
Rated Voltage	AC/DC6V,AC/DC12V,AC/DC24V,AC/DC36V
Rated Current	About 15mA
DroppingWay	Inner resistance (except for some products)
Lamp Circuit Diagram	Using AC/DCLed lamp, the terminals have no difference of anode and cathode: Using inner resistance, do not need connect outer resistance GQ12 and GQ16 have no inner resistance, need connect outer resistance.
Note: DCLed and other voltage can be made to order.	



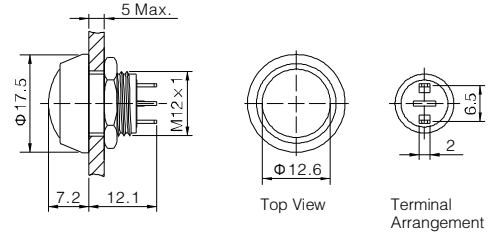
GQ12B-10/S

- ⊙ Φ 12mm Diameter
- ⊙ Switch Rating: 2A/36VDC
- ⊙ Contact Configuration: 1NO
- ⊙ Operation Type: Momentary
- ⊙ The Crust material:Stainless steel
- ⊙ IP Degree: IP65(IP67 can be made to order) ,IK08



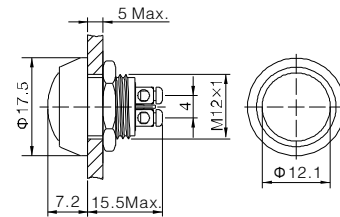
GQ12B-10/J/S

- ⊙ Φ 12mm Diameter
- ⊙ Switch Rating: 2A/36VDC
- ⊙ Contact Configuration: 1NO
- ⊙ Operation Type: Momentary
- ⊙ The Crust material:Stainless steel
- ⊙ IP Degree: IP65(IP67 can be made to order) ,IK08



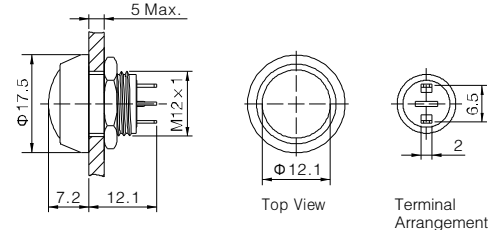
GQ12B-10/A

- ⊙ Φ 12mm Diameter
- ⊙ Switch Rating: 2A/36VDC
- ⊙ Contact Configuration: 1NO
- ⊙ Operation Type: Momentary
- ⊙ The Crust Material: Zn-Al Alloy(black)
- ⊙ Material of Actuator: PBT
- ⊙ Head Color(Δ): **R G Y O B W N**
- ⊙ IP Degree: IP65(IP67 made to order) ,IK08



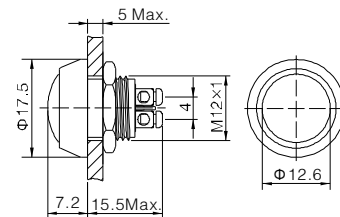
GQ12B-10/J/A

- ⊙ Φ 12mm Diameter
- ⊙ Switch Rating: 2A/36VDC
- ⊙ Contact Configuration: 1NO
- ⊙ Operation Type: Momentary
- ⊙ The Crust Material: Zn-Al Alloy(black)
- ⊙ Material of Actuator: PBT
- ⊙ Head Color(Δ): **R G Y O B W N**
- ⊙ IP Degree: IP65(IP67 made to order) ,IK08



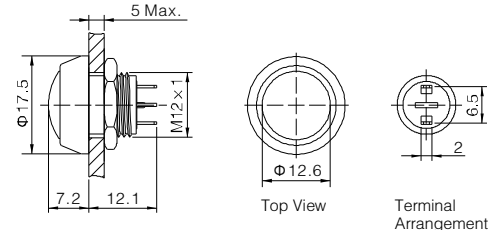
GQ12B-10/N

- ⊙ Φ 12mm Diameter
- ⊙ Switch Rating: 2A/36VDC
- ⊙ Contact Configuration: 1NO
- ⊙ Operation Type: Momentary
- ⊙ The Crust Material:Nickel Plated Brass (Chrome-plated can be made to order)
- ⊙ IP Degree: IP65(IP67 made to order) ,IK08



GQ12B-10/J/N

- ⊙ Φ 12mm Diameter
- ⊙ Switch Rating: 2A/36VDC
- ⊙ Contact Configuration: 1NO
- ⊙ Operation Type: Momentary
- ⊙ The Crust Material:Nickel Plated Brass (Chrome-plated can be made to order)
- ⊙ IP Degree: IP65(IP67 made to order) ,IK08

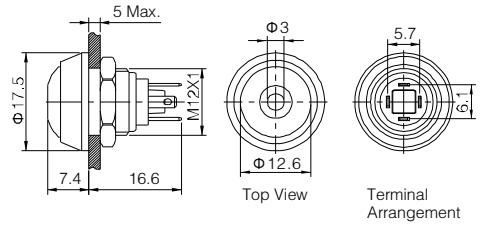


GQ12B-10/S		Material	But ton	PBT/Stainless Steel	GQ12B-10/J/S		Material	But ton	PBT/Stainless Steel
GQ12B-10/A			Body	Zn-Al Alloy/Stainless Steel/Nickel Plated Brass	GQ12B-10/J/A			Body	Zn-Al Alloy/Stainless Steel/Nickel Plated Brass
GQ12B-10/N			Base	PBT	GQ12B-10/J/N			Base	PBT
Terminal Type	Screw Terminal	Operation Pressure	About 5N		Terminal Type	Pin Terminal(2 × 0.5mm)	Operation Pressure	About 5N	
Screw Terminal	x(double-break slow-motion contact)	Operation Travel	About 2.5mm		Switching	x(double-break slow-motion contact)	Operation Travel	About 2.5mm	
Panel Thickness	1 ~ 5mm				Panel Thickness	1 ~ 5mm			
Panel Torque	0.3Nm				Torque	0.3Nm			
Mechanical Life	1,000,000 cycles				Mechanical Life	1,000,000 cycles			
Electrical Life	200,000 cycles	RoHS	Made to order		Electrical Life	200,000 cycles	RoHS	Made to order	



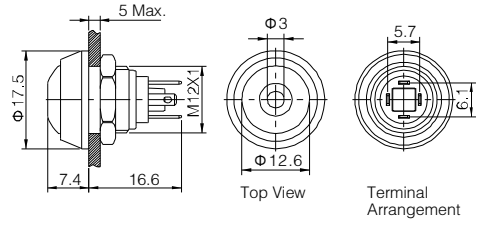
GQ12B-10D/J/Δ/▲/S

- ⊙ Φ 12mm Diameter
- ⊙ Switch Rating: 2A/36VDC
- ⊙ Contact Configuration: 1NO
- ⊙ Operation Type: Momentary
- ⊙ Dot illuminated
- ⊙ LED Color(Δ): **R G Y O B W**
- ⊙ Voltage(▲): 6V/12V/24V/36V(Outer resistance)
- ⊙ The Crust Material:Stainless Steel
- ⊙ IP Degree: IP65 ,IK08



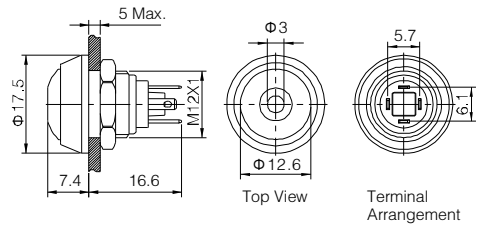
GQ12B-10D/J/Δ/▲/A

- ⊙ Φ 12mm Diameter
- ⊙ Switch Rating: 2A/36VDC
- ⊙ Contact Configuration: 1NO
- ⊙ Operation Type: Momentary
- ⊙ Dot illuminated
- ⊙ LED Color(Δ): **R G Y O B W**
- ⊙ Voltage(▲): 6V/12V/24V/36V(Outer resistance)
- ⊙ The Crust Material:Zn-Al Alloy(black)
- ⊙ IP Degree: IP65 ,IK08



GQ12B-10D/J/Δ/▲/N

- ⊙ Φ 12mm Diameter
- ⊙ Switch Rating: 2A/36VDC
- ⊙ Contact Configuration: 1NO
- ⊙ Operation Type: Momentary
- ⊙ Dot illuminated
- ⊙ LED Color(Δ): **R G Y O B W**
- ⊙ Voltage(▲): 6V/12V/24V/36V(Outer resistance)
- ⊙ The Crust Material:Nickel Plated Brass
- ⊙ IP Degree: IP65 ,IK08



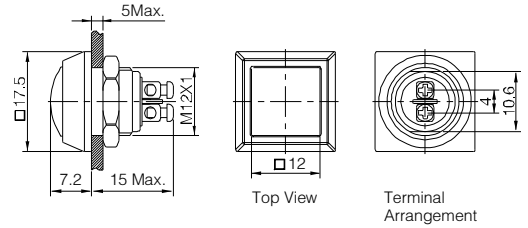
GQ12B-10D/J/Δ/▲/S		Material	Lamp Cover	PBT/Stainless Steel
GQ12B-10D/J/Δ/▲/A			Body	Zn-Al Alloy/Stainless Steel/Nickel Plated Brass
GQ12B-10D/J/Δ/▲/N			Base	PBT
Terminal Type	Pin Terminal(2×0.5mm)	Operation Pressure	About 5N	
Switching	x(double-break slow-motion contact)	Operation Travel	About 2.5mm	
Panel Thickness	1 ~ 5mm			
Torque	0.3Nm			
Mechanical Life	1,000,000 cycles			
Electrical Life	200,000 cycles	RoHS	Made to order	

Lamp Ratings	Lamp Type	dot illuminated/ring illuminated(LED)				
	Led Color	R Y O	G B W			
	Rated Voltage_{Ue}	AC/DC 1.8V		AC/DC 2.8V		
	Rated Current_{Ie}	15mA				
	Life	40000 hours				
Current-Limiting Resistance Configuration Table	Operating Voltage(U)	6V	12V	24V	36V	
	Current-Limiting Resistance (R)	R Y O	270 Ω, 1/4W	820 Ω, 1/2W	1.5K Ω, 1W	2.7K Ω, 1W
		G B W	220 Ω, 1/4W	680 Ω, 1/2W	1.5K Ω, 1W	2.7K Ω, 1W



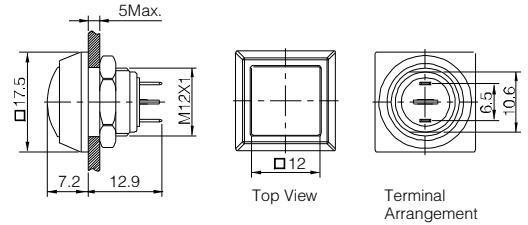
GQ12S-10/T

- ⊙ Φ 12mm Diameter
- ⊙ Switch Rating: 2A/36VDC
- ⊙ Contact Configuration: 1NO
- ⊙ Operation Type: Momentary
- ⊙ Head Color(Δ): **R G Y O B W N**
- ⊙ The Crust Material: Zn-Al alloy plating nickel (plating chrome made to order)
- ⊙ Material of Actuator: PBT
- ⊙ IP Degree: IP65(IP67 made to order) ,IK08



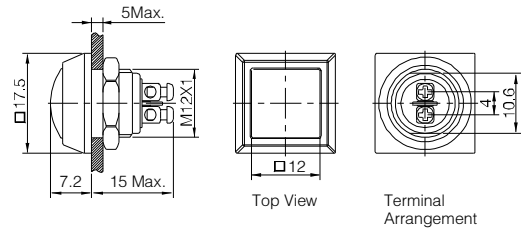
GQ12S-10/J/T

- ⊙ Φ 12mm Diameter
- ⊙ Switch Rating: 2A/36VDC
- ⊙ Contact Configuration: 1NO
- ⊙ Operation Type: Momentary
- ⊙ Head Color(Δ): **R G Y O B W N**
- ⊙ The Crust Material: Zn-Al alloy plating nickel (plating chrome made to order)
- ⊙ Material of Actuator: PBT
- ⊙ IP Degree: IP65(IP67 made to order) ,IK08



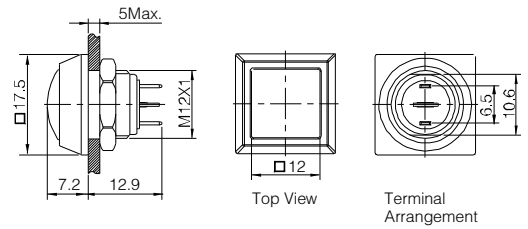
GQ12S-10/A

- ⊙ Φ 12mm Diameter
- ⊙ Switch Rating: 2A/36VDC
- ⊙ Contact Configuration: 1NO
- ⊙ Operation Type: Momentary
- ⊙ Head Color(Δ): **R G Y O B W N**
- ⊙ The Crust Material: Zn-Al Alloy(black)
- ⊙ Material of Actuator: PBT
- ⊙ IP Degree: IP65(IP67 made to order) ,IK08



GQ12S-10/J/A

- ⊙ Φ 12mm Diameter
- ⊙ Switch Rating: 2A/36VDC
- ⊙ Contact Configuration: 1NO
- ⊙ Operation Type: Momentary
- ⊙ Head Color(Δ): **R G Y O B W N**
- ⊙ The Crust Material: Zn-Al Alloy(black)
- ⊙ Material of Actuator: PBT
- ⊙ IP Degree: IP65(IP67 made to order) ,IK08



GQ12S-10/T GQ12S-10/A		Material	Button	PBT	GQ12S-10/J/T GQ12S-10/J/A		Material	Button	PBT
			Body	Zn-Al alloy plating nickel/ Zn-Al Alloy(black)				Body	Zn-Al alloy plating nickel/ Zn-Al Alloy(black)
		Base	PBT			Base	PBT		
Terminal Type	Screw Terminal	Operation Pressure	About 5N	Made to order	Pin Terminal(2 × 0.5mm)	Operation Pressure	About 5N		
Switching	X(double-break slow-motion contact)	Operation Travel	About 2.5mm	Switching	X(double-break slow-motion contact)	Operation Travel	About 2.5mm		
Panel Thickness	1 ~ 5mm			Panel Thickness	1 ~ 5mm				
Torque	0.3Nm			Torque	5 ~ 14Nm				
Mechanical Life	1,000,000 cycles			Mechanical Life	1,000,000 cycles				
Electrical Life	200,000 cycles	RoHS	Made to order	Electrical Life	200,000 cycles	RoHS	Made to order		