

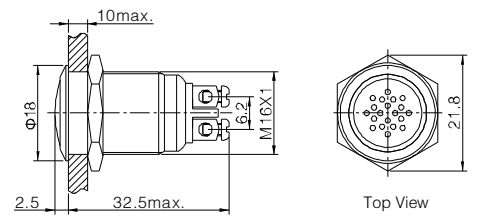
GQ16,19

Buzzer



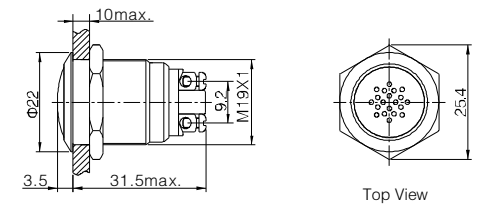
New

- ◎ Φ 16mm Diameter
- ◎ Sound Type(□): Continuous Buzz(M) / Incontinuous Buzz(JM)
- ◎ Voltage(▲): DC12V / DC24V
- ◎ Rated Current: \leq 30mA
- ◎ Sound Intensity: \geq 85dB(about 0.1Meter away) / \geq 75dB(about 1Meter away)
- ◎ Crust Material(◎): Stainless steel(S)
- ◎ IP Degree: IP40,IK04



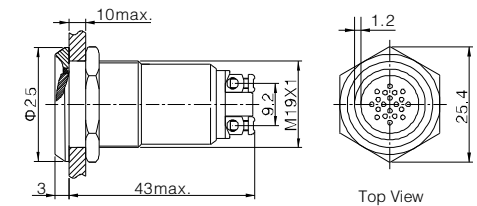
New

- ◎ Φ 19mm Diameter
- ◎ Sound Type(□): Continuous Buzz(M) / Incontinuous Buzz(JM)
- ◎ Voltage(▲): DC12V / DC24V
- ◎ Rated Current: \leq 30mA
- ◎ Sound Intensity: \geq 85dB(about 0.1Meter away) / \geq 75dB(about 1Meter away)
- ◎ Crust Material(◎): Stainless steel(S)
- ◎ IP Degree: IP40,IK04

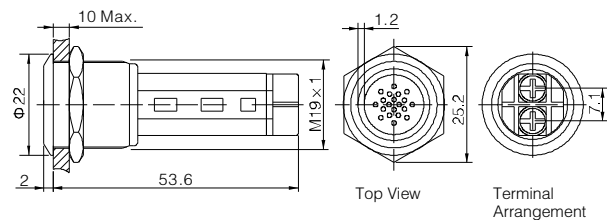


New

- ◎ Φ 19mm Diameter
- ◎ Sound Type: Flicker Buzzer
- ◎ Color(Δ): R G Y O B W
- ◎ Voltage(▲): DC12V / DC24V
- ◎ Rated Current: \leq 30mA
- ◎ Sound Intensity: \geq 85dB(about 0.1Meter away) / \geq 75dB(about 1Meter away)
- ◎ Crust Material(◎): Stainless steel(S)
- ◎ IP Degree: IP40,IK04



- ◎ Φ 19mm Diameter
- ◎ Sound Type(■): Continuous Buzz(M) / Incontinuous Buzz(JM) / Flicker Buzzer(SM)
- ◎ Color(Δ): R G Y O B W
- ◎ Rated Voltage(▲): DC12V / DC24V / A C110V / AC220V
- ◎ Sound Intensity: \geq 85dB(about 0.1Meter away) / \geq 75dB(about 1Meter away)
- ◎ Crust Material(◎): Stainless steel(S)
- ◎ IP Degree: IP40,IK04



| | | | |
|---|------------------|--------------------|-----------------|
| GQ16B-□/▲ GQ19B-□/▲ GQ19B-SM/Δ/▲ LAS1-AGQ-■/Δ▲ | Material | Voice Cover | Stainless steel |
| | | Body | Stainless steel |
| | | Base | PBT |
| Panel Thickness | 1 ~ 10mm(LAS1GQ) | | |
| Torque | 0.8Nm | | |
| Terminal Type | Screw Terminal | | |
| | | | |
| | | RoHS | Made to order |

ONPOW