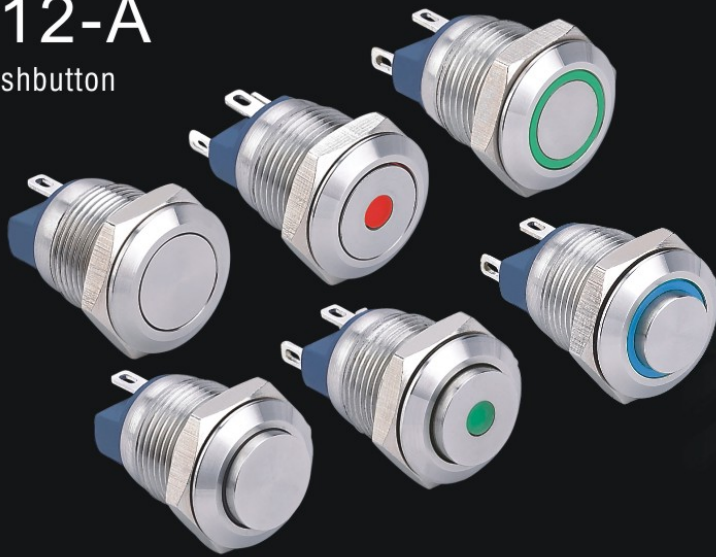


GQ12-A

Metal Pushbutton



Part-number Description

GQ12	-	A	★	□	◇	△	▲	◎
Code of series	Code name	Front shape F Flat round H High round	Contact structure 10 1NO	Lamp type D Dot E Ring	LED color R Red G Green Y Yellow O Orange B Blue W White	LED voltage AC/DC 6V AC/DC 12V AC/DC 24V AC/DC 110V AC/DC 220V 5, 6, 12, 24V are with inner resistor, other voltage need to connect an outer resistor.	Crust material S Stainless steel	

Note: Pls read the catalogue carefully, and choose the right part-number according to the sign.

Specifications

Operating Temperature	-25°C~+55°C(no freezing)) keep the air flowing around illuminated pushbutton
Operating Humidity	45~85%RH(no condensation))
Contact Resistance	≤50MΩ
Insulation Resistance	≥1000MΩ
Dielectric Strength	1500V, AC50Hz, 5 seconds
Vibration Resistance	50Hz, Amplitude 1.2mm
Shock Resistance	>10g
Solder Heat Resistance	320°C(or 30W soldering iron) no more than 2 seconds

Switching Operation

Type	X
Sign	
Diagram	

Note: Using two terminals, double-break and slow-motion contact

Lamp Ratings

Lamp Type	LED lamp(AC/DC)
LED Color	R G Y O B W
Life	40000hours(Reference)
Rated Voltage	AC/DC6V, AC/DC12V, AC/DC24V
Rated Current	About 15mA
DroppingWay	5, 6, 12, 24V are with inner resistor, other voltage need to connect an outer resistor
Lamp Circuit Diagram	Using AC/DCLED lamp, the terminals have no difference of anode and cathode

Note: DC LED and other voltage can be made to order.

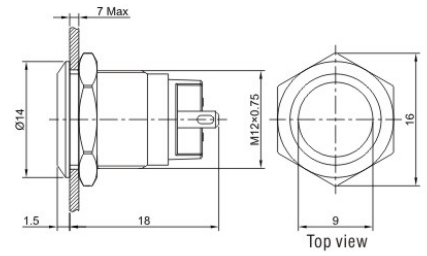
Terminal Description

	+,- are lamp terminals, the standard LED have no difference of anode and cathode; Lamp and switch are relatively independent and can use switch or peripheral circuit to control the lamp state.
--	--

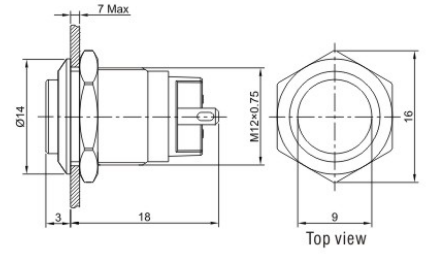
Standard and Certification

Standard	Certification Mark	Certificate Authority/Certification Number
EN61058-1:2002+A2:2003		VOV/VT11018807
EN60947-1:2004		CTS/CTS070706-01006-E

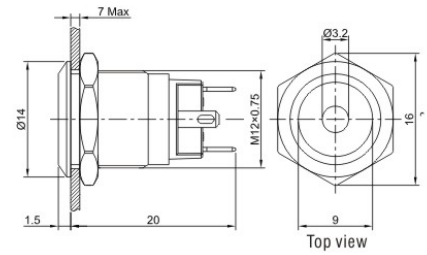
GQ12F-10/S



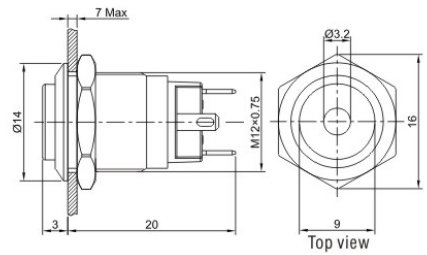
GQ12H-10/S



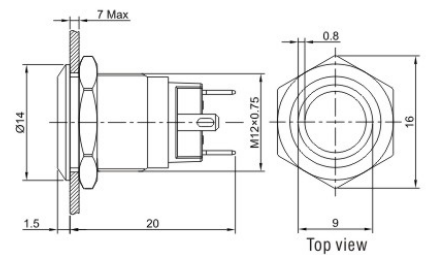
GQ12F-10D/▲/△/S



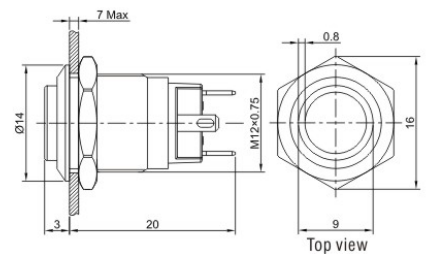
GQ12H-10D/▲/△/S



GQ12F-10E/▲/△/S



GQ12H-10E/▲/△/S



- Installation Diameter: Φ 12mm
- Switch Max Rating: 2A36VDC
- Contact Configuration: 1NO
- Operation Type: Momentary
- LED Color(Δ): **R G Y O B W N**
- LED voltage(▲): 6V/12V/24V(outer resistor)
- IP Degree: IP67(FP),IK08

- Terminal type: Screw terminal/Pin terminal(2 × 0.5mm)
- Switching: x(double-break and slow-motion contact)
- Panel Thickness: 1~6mm
- Torque: About 0.6Nm
- Mechanical Life: 500,000
- Electrical Life: 50,000
- Button: Stainless steel/Black anodized aluminium alloy
- Crust: Stainless steel/Nickel-plated brass
- Base: PA
- Operation Pressure: 2.5~4N
- Operation Travel: About 2mm
- RoHS** Made to order

Terminal Arrangement

