

LAS2GQ

Metal Push Button



Part-number Description

LAS2	GQ	★	□	■	◇	○	△	▲	◎	☆
Code of series	The Front shape	Contact structure	Operation Type	Lamp Type	Illuminated type	Lamp color and colorized button	Lamp Voltage	Crust material	IP Rating	
	F Flat Round H High Round C Concave round G High concave round PF Super Flat Head +Flat Button PH Super Flat Head +High Flat Button	11 1NO1NC 22 2NO2NC No letter means signal lamp	Z Latching No letter means Momentary	D Dot E Ring	T Power symbol No letter means standard type Other symbol can be made to order	R Red G Green Y Yellow O Orange B Blue W White	AC/DC 6V AC/DC 12V AC/DC 24V AC/DC 110V AC/DC 220V Note: Other voltage can be made to order	N Nickel-plated Brass S Stainless steel A Aluminium Alloy	FP IP67 No letter means IP40	

Note: Pls read the catalogue carefully, and choose the right part-number according to the sign.

Specifications

Operating Temperature	-25°C~+55°C(no freezing) keep the air flowing around illuminated pushbutton
Operating Humidity	45~85%RH(no condensation)
Contact Resistance	≤50mΩ
Insulation Resistance	≥1000MΩ
Dielectric Strength	2000V,A C50Hz,5 seconds
Vibration Resistance	50Hz,Amplitude 1.2mm
Shock Resistance	> 10g
Solder Heat Resistance	320°C(or 30W soldering iron) no more than 2 seconds)

Switch Rating

Rated Insulation Voltage Ui		250V				
Thermal Current Ith		3A				
Rated voltage		12V	24V	110V	220V	
Rated Operation Current	AC	Resistive load	—	—	1A	0.5A
	50/60Hz	Inductive load	—	—	0.7A	0.5A
	DC	Resistive load	1A	1A	0.2A	—
		Inductive load	0.7A	0.7A	0.1A	—
Contact material		Silver Alloy				

Minimum load: 3VAC/DC,5mA(Reference)
Application scope depends on operating environment and load type

Standard and Certification

Standard	Certification Mark	Certificate Authority/Certification Number
GB 14048.5-2008	CCC	CCC/2011010305485983
EN61058-1:2002+A2:2008	CE	VOV/VT11018805
EN60947-1:2004	CE	CTS/CTS070706-01006-E

Lamp Ratings

Lamp Type	LED lamp(AC/DC)
Led Color	R G Y O B W
Life	40000 hours (Reference)
Rated Voltage	AC/DC6V,AC/DC12V,AC/DC24V,AC/DC36V,AC110V,AC250V
Rated Current	5~48V About 15mA; 110~250V About 2mA
Dropping Way	Inner resistance;Outer resistance when using 6V lamp.
Lamp Circuit Diagram	Using AC/DC LED lamp,the terminals have no difference of anode and cathode.Using inner resistance,do not need connect outer resistance. Using 6V lamp when the lamp voltage is above 60V,and need connect outer droppingsistance.



Note: DC LED and other voltage can be made to order.

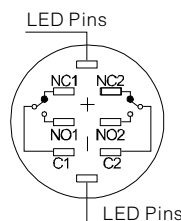
Switching Operation

Type	C
Sign	NO — NC —
Diagram	NO — NC —

Explanation:Using three terminals,single-break and fast-motion change over contact.

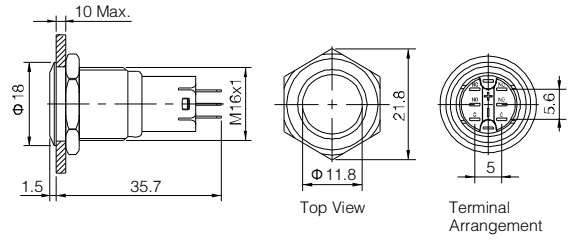
Terminal Description

LED Pins	Two sets at most. C1,NO1,NC1 and C2,NO2,NC2 are one set respectively; C is commonused, NO is normal opened,NC is normal closed; +, - are lamp terminals,the standard LED have no difference of anode and cathode; Lamp and switch are relatively independent and canuse switch or peripheral circuit to control the lamp state.
-----------------	--

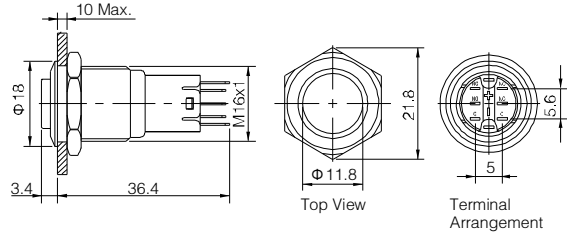




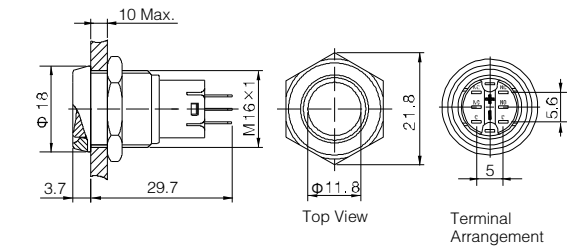
- ⊙ Install diameter: $\Phi 16\text{mm}$
- ⊙ Switch Max Rating: Ith:3A, Ui:250V
- ⊙ Button shape: Flat Round
- ⊙ Contact Configuration(□): 1NO1NC(11)/ 2NO2NC(22)
- ⊙ Operation Type(■): Momentary / Latching(Z)
- ⊙ Crust material(⊙): Stainless steel(S)/ Nickel plated brass(N)/Aluminium Alloy(A)
- ⊙ IP Rating(☆): IP40/IP67(FP),IK09



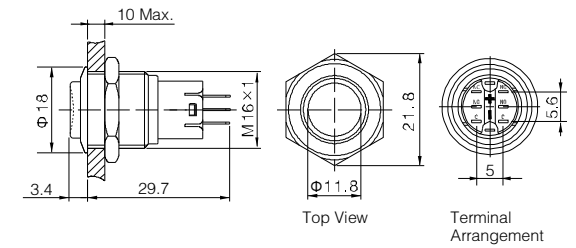
- ⊙ Install diameter: $\Phi 16\text{mm}$
- ⊙ Switch Max Rating: Ith:3A, Ui:250V
- ⊙ Button shape: High Flat Round
- ⊙ Contact Configuration(□): 1NO1NC(11)/ 2NO2NC(22)
- ⊙ Operation Type(■): Momentary / Latching(Z)
- ⊙ Crust material(⊙): Stainless steel(S)/ Nickel plated brass(N)/Aluminium Alloy(A)
- ⊙ IP Rating(☆): IP40/IP67(FP),IK09



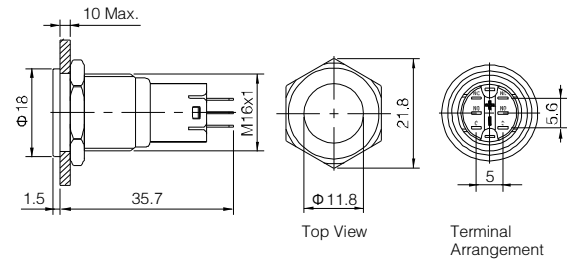
- ⊙ Install diameter: $\Phi 16\text{mm}$
- ⊙ Switch Max Rating: Ith:3A, Ui:250V
- ⊙ Button shape: Concave Round
- ⊙ Contact Configuration(□): 1NO1NC(11)/ 2NO2NC(22)
- ⊙ Operation Type(■): Momentary / Latching(Z)
- ⊙ Crust material(⊙): Stainless steel(S)/ Nickel plated brass(N)/Aluminium Alloy(A)
- ⊙ IP Rating(☆): IP40/IP67(FP),IK09



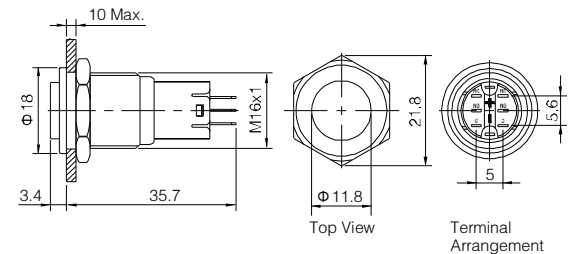
- ⊙ Install diameter: $\Phi 16\text{mm}$
- ⊙ Switch Max Rating: Ith:3A, Ui:250V
- ⊙ Button shape: High concave Round
- ⊙ Contact Configuration(□): 1NO1NC(11)/ 2NO2NC(22)
- ⊙ Operation Type(■): Momentary / Latching(Z)
- ⊙ Button Color(Δ): **R G Y O B W N**
- ⊙ Crust material(⊙): Stainless steel(S)/ Nickel plated brass(N)
- ⊙ IP Rating(☆): IP40/IP67(FP),IK09



- ⊙ Install diameter: $\Phi 16\text{mm}$
- ⊙ Switch Max Rating: Ith:3A, Ui:250V
- ⊙ Button shape: Super Flat Round
- ⊙ Contact Configuration(□): 1NO1NC(11)/ 2NO2NC(22)
- ⊙ Operation Type(■): Momentary / Latching(Z)
- ⊙ Crust material(⊙): Stainless steel(S)/ Nickel plated brass(N)
- ⊙ IP Rating(☆): IP40/IP67(FP),IK09

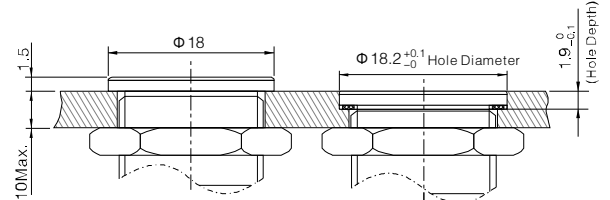


- ⊙ Install diameter: $\Phi 16\text{mm}$
- ⊙ Switch Max Rating: Ith:3A, Ui:250V
- ⊙ Button shape: High Super Flat Round
- ⊙ Contact Configuration(□): 1NO1NC(11)/ 2NO2NC(22)
- ⊙ Operation Type(■): Momentary / Latching(Z)
- ⊙ Crust material(⊙): Stainless steel(S)/ Nickel plated brass(N)
- ⊙ IP Rating(☆): IP40/IP67(FP),IK09



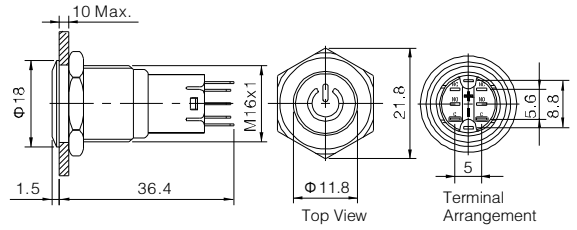
LAS2GQF-□■/⊙/☆		LAS2GQPF-□■/⊙/☆	
LAS2GQH-□■/⊙/☆		LAS2GQPH-□■/⊙/☆	
LAS2GQC-□■/⊙/☆		LAS2GQG-□■/Δ/⊙/☆	
Terminal Type	Pin Terminal(1.8x0.4mm)	Material	Button
Switching	C(single-breakfast-motion changeover contact)		StainlessSteel/Aluminium alloy (Black)
Panel Thickness	1 ~ 10mm		Crust
Torque	0.6Nm		Stainless steel/Nickel plated Brass/ Aluminium alloy black anodized
Mechanical Life	200,000 cycles	Base	PBT
Electrical Life	50,000 cycles	Operation Pressure	2.5~4N
		Operation Travel	About 2.8mm
			RoHS
			Made to order

LAS2GQ super flat head install way:

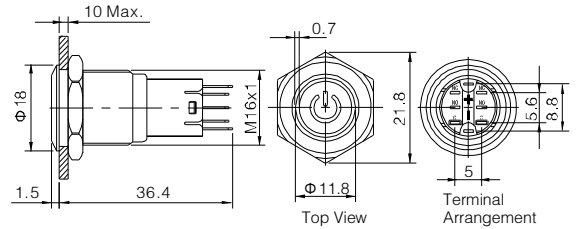




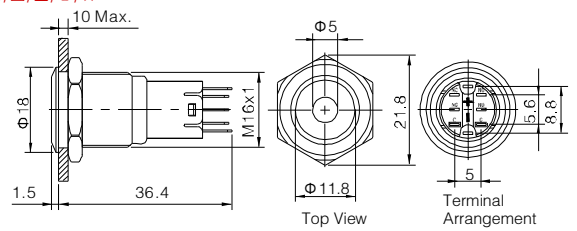
- ⊙ If you need Indicator, The part number is: LAS2GQF-DT/Δ/▲/⊙/☆
- ⊙ Install diameter: Φ 16mm
- ⊙ Switch Max Rating: Ith:3A, Ui:250V
- ⊙ Button shape: Flat head
- ⊙ Contact Configuration(□): 1NO1NC(11)/ 2NO2NC(22)
- ⊙ Operation Type(■): Momentary / Latching(Z)
- ⊙ LED Color(Δ): **R G Y O B W**
- ⊙ LED Voltage(▲): 6V/12V/24V/110V/220V
- ⊙ Crust material(⊙): Stainless steel(S)/ Nickel plated brass(N)
- ⊙ IP Rating(☆): IP40/IP67(FP),IK09



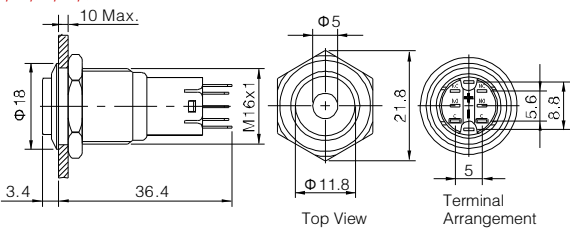
- ⊙ If you need Indicator, The part number is: LAS2GQF-ET/Δ/▲/⊙/☆
- ⊙ Install diameter: Φ 16mm
- ⊙ Switch Max Rating: Ith:3A, Ui:250V
- ⊙ Button shape: Flat head Ring illuminated
- ⊙ Contact Configuration(□): 1NO1NC(11)/ 2NO2NC(22)
- ⊙ Operation Type(■): Momentary / Latching(Z)
- ⊙ LED Color(Δ): **R G Y O B W**
- ⊙ LED Voltage(▲): 6V/12V/24V/110V/220V
- ⊙ Crust material(⊙): Stainless steel(S)/ Nickel plated brass(N)
- ⊙ IP Rating(☆): IP40/IP67(FP),IK09



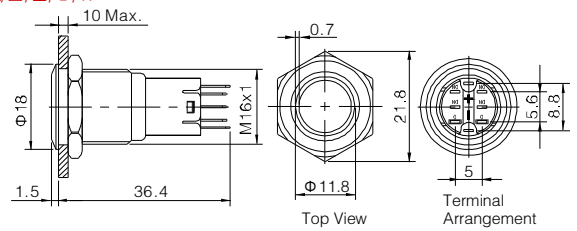
- ⊙ If you need Indicator, The part number is: LAS2GQF-D/Δ/▲/⊙/☆
- ⊙ Install diameter: Φ 16mm
- ⊙ Switch Max Rating: Ith:3A, Ui:250V
- ⊙ Button shape: Flat head Dot illuminated
- ⊙ Contact Configuration(□): 1NO1NC(11)/ 2NO2NC(22)
- ⊙ Operation Type(■): Momentary / Latching(Z)
- ⊙ LED Color(Δ): **R G Y O B W**
- ⊙ LED Voltage(▲): 6V/12V/24V/110V/220V
- ⊙ Crust material(⊙): Stainless steel(S)/ Nickel plated brass(N)/Aluminium anodized(A)
- ⊙ IP Rating(☆): IP40/IP67(FP),IK09



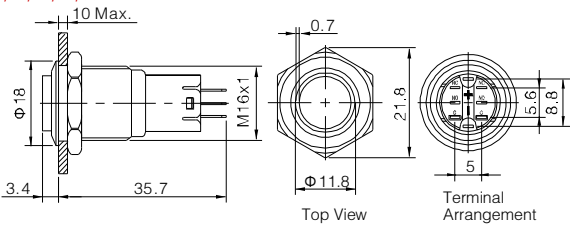
- ⊙ If you need Indicator, The part number is: LAS2GQH-D/Δ/▲/⊙/☆
- ⊙ Install diameter: Φ 16mm
- ⊙ Switch Max Rating: Ith:3A, Ui:250V
- ⊙ Button shape: High Flat head Dot illuminated
- ⊙ Contact Configuration(□): 1NO1NC(11)/ 2NO2NC(22)
- ⊙ Operation Type(■): Momentary / Latching(Z)
- ⊙ LED Color(Δ): **R G Y O B W**
- ⊙ LED Voltage(▲): 6V/12V/24V/110V/220V
- ⊙ Crust material(⊙): Stainless steel(S)/ Nickel plated brass(N)/Aluminium anodized(A)
- ⊙ IP Rating(☆): IP40/IP67(FP),IK09



- ⊙ If you need Indicator, The part number is: LAS2GQF-E/Δ/▲/⊙/☆
- ⊙ Install diameter: Φ 16mm
- ⊙ Switch Max Rating: Ith:3A, Ui:250V
- ⊙ Button shape: Flat head Ring illuminated
- ⊙ Contact Configuration(□): 1NO1NC(11)/ 2NO2NC(22)
- ⊙ Operation Type(■): Momentary / Latching(Z)
- ⊙ LED Color(Δ): **R G Y O B W**
- ⊙ LED Voltage(▲): 6V/12V/24V/110V/220V
- ⊙ Crust material(⊙): Stainless steel(S)/ Nickel plated brass(N)/Aluminium anodized(A)
- ⊙ IP Rating(☆): IP40/IP67(FP),IK09



- ⊙ If you need Indicator, The part number is: LAS2GQH-E/Δ/▲/⊙/☆
- ⊙ Install diameter: Φ 16mm
- ⊙ Switch Max Rating: Ith:3A, Ui:250V
- ⊙ Button shape: High Flat head Ring illuminated
- ⊙ Contact Configuration(□): 1NO1NC(11)/ 2NO2NC(22)
- ⊙ Operation Type(■): Momentary / Latching(Z)
- ⊙ LED Color(Δ): **R G Y O B W**
- ⊙ LED Voltage(▲): 6V/12V/24V/110V/220V
- ⊙ Crust material(⊙): Stainless steel(S)/ Nickel plated brass(N)/Aluminium anodized(A)
- ⊙ IP Rating(☆): IP40/IP67(FP),IK09



LAS2GQF-□■DT/Δ/▲/⊙/☆
 LAS2GQF-□■D/Δ/▲/⊙/☆
 LAS2GQF-□■E/Δ/▲/⊙/☆

LAS2GQF-□■ET/Δ/▲/⊙/☆
 LAS2GQH-□■D/Δ/▲/⊙/☆
 LAS2GQH-□■E/Δ/▲/⊙/☆

Terminal Type	Pin Terminal(1.8x0.4mm)
Switching	C(single-breakfast-motion changeover contact)
Panel Thickness	1 ~ 10mm
Torque	0.6Nm
Mechanical Life	200,000 cycles
Electrical Life	50,000 cycles

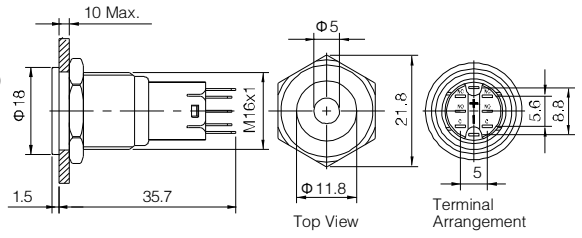
Material	Button	StainlessSteel/Aluminium alloy (Black)
	Crust	Stainless steel/Nickel plated Brass/ Aluminium alloy black anodized
	Base	PBT
Operation Pressure	2.5-4N	
Operation Travel	About 2.8mm	
RoHS	Made to order	





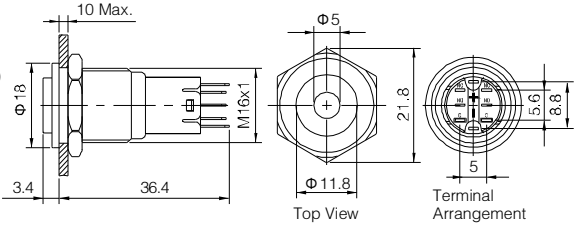
New

- ⊙ If you need Indicator, The part number is: LAS2GQPF-D/Δ/▲/◎/☆
- ⊙ Install diameter: Φ 16mm
- ⊙ Switch Max Rating: Ith:3A, Ui:250V
- ⊙ Button shape: Super flat head Dot illuminated
- ⊙ Contact Configuration(□): 1NO1NC(11)/ 2NO2NC(22)
- ⊙ Operation Type(■): Momentary / Latching(Z)
- ⊙ LED Color(Δ): R G Y O B W
- ⊙ LED Voltage(▲): 6V/12V/24V/110V/220V
- ⊙ Crust material(◎): Stainless steel(S)/ Nickel plated brass(N)
- ⊙ IP Rating(☆): IP40/IP67(FP),IK09



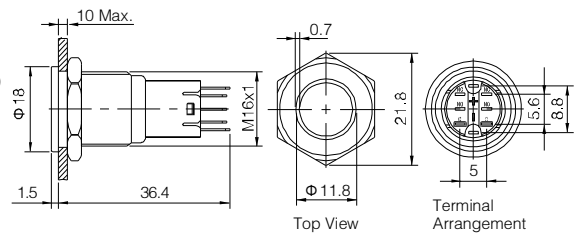
New

- ⊙ If you need Indicator, The part number is: LAS2GQPH-D/Δ/▲/◎/☆
- ⊙ Install diameter: Φ 16mm
- ⊙ Switch Max Rating: Ith:3A, Ui:250V
- ⊙ Button shape: Super High flat head Dot illuminated
- ⊙ Contact Configuration(□): 1NO1NC(11)/ 2NO2NC(22)
- ⊙ Operation Type(■): Momentary / Latching(Z)
- ⊙ LED Color(Δ): R G Y O B W
- ⊙ LED Voltage(▲): 6V/12V/24V/110V/220V
- ⊙ Crust material(◎): Stainless steel(S)/ Nickel plated brass(N)
- ⊙ IP Rating(☆): IP40/IP67(FP),IK09



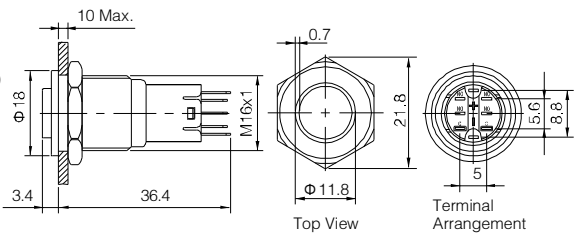
New

- ⊙ If you need Indicator, The part number is: LAS2GQPF-E/Δ/▲/◎/☆
- ⊙ Install diameter: Φ 16mm
- ⊙ Switch Max Rating: Ith:3A, Ui:250V
- ⊙ Button shape: Super flat head Ring illuminated
- ⊙ Contact Configuration(□): 1NO1NC(11)/ 2NO2NC(22)
- ⊙ Operation Type(■): Momentary / Latching(Z)
- ⊙ LED Color(Δ): R G Y O B W
- ⊙ LED Voltage(▲): 6V/12V/24V/110V/220V
- ⊙ Crust material(◎): Stainless steel(S)/ Nickel plated brass(N)
- ⊙ IP Rating(☆): IP40/IP67(FP),IK09



New

- ⊙ If you need Indicator, The part number is: LAS2GQPH-E/Δ/▲/◎/☆
- ⊙ Install diameter: Φ 16mm
- ⊙ Switch Max Rating: Ith:3A, Ui:250V
- ⊙ Button shape: High Super flat head Ring illuminated
- ⊙ Contact Configuration(□): 1NO1NC(11)/ 2NO2NC(22)
- ⊙ Operation Type(■): Momentary / Latching(Z)
- ⊙ LED Color(Δ): R G Y O B W
- ⊙ LED Voltage(▲): 6V/12V/24V/110V/220V
- ⊙ Crust material(◎): Stainless steel(S)/ Nickel plated brass(N)
- ⊙ IP Rating(☆): IP40/IP67(FP),IK09



LAS2GQPF-□■D/Δ/▲/◎/☆		LAS2GQPH-□■D/Δ/▲/◎/☆		Material	Lamp Cover	Stainless Steel/Aluminium alloy (Black)
LAS2GQPF-□■E/Δ/▲/◎/☆		LAS2GQPH-□■E/Δ/▲/◎/☆				
Terminal Type	Pin Terminal(1.8x0.4mm)			Base	PBT	
Switching	C(single-breakfast-motion changeover contact)			Operation Pressure	2.5~4N	
Panel Thickness	1 ~ 10mm			Operation Travel	About 2.8mm	
Torque	0.6Nm			RoHS	Made to order	
Mechanical Life	200,000 cycles					
Electrical Life	50,000 cycles					

LAS2GQ super flat head install way:

