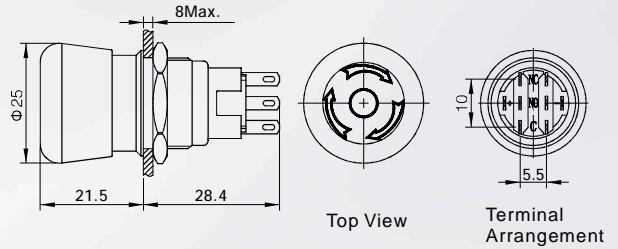




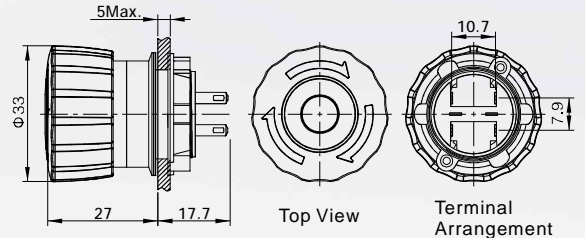
LAS1-AGQ-□TSB MetalCrust

- ⊙ Install Diameter: $\Phi 19\text{mm}$
- ⊙ Operation Type: Push lock - Turn Reset
- ⊙ Max Rating: Ith:5A, Ui:250V
- ⊙ Switch Rating: 250V 0.5A
- ⊙ Contact Configuration(□): 11/ 22
- ⊙ Terminal Type: Pin Terminal(2.8 × 0.5mm)
- ⊙ IP Rating: IP65,IK02



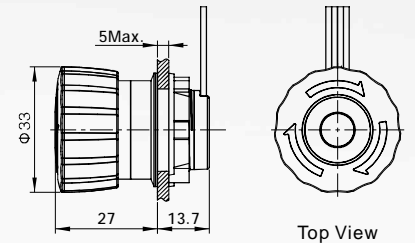
LAS1-A22Y-□TSB Short Type

- ⊙ Install Diameter: $\Phi 22\text{mm}$
- ⊙ Operation Type: Push lock - Turn Reset
- ⊙ Max Rating: Ith:5A, Ui:250V
- ⊙ Switch Rating: 250V 1.5A
- ⊙ Contact Configuration(□): 01/02/11
- ⊙ Terminal Type: Pin Terminal(2.8 × 0.5mm)
- ⊙ IP Rating: IP65



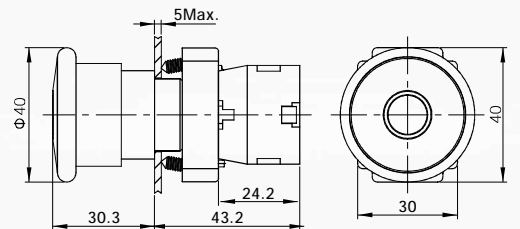
LAS1-A22Y-□TSB/L Short Type

- ⊙ Install Diameter: $\Phi 22\text{mm}$
- ⊙ Operation Type: Push lock - Turn Reset
- ⊙ Max Rating: Ith:5A, Ui:250V
- ⊙ Switch Rating: 250V 1.5A
- ⊙ Contact Configuration(□): 01/02/11
- ⊙ Terminal Type: Wire leading
- ⊙ IP Rating: IP65



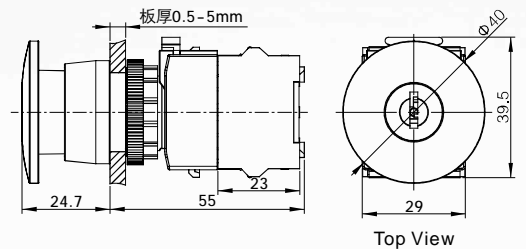
HBYS-□MT

- ⊙ Install Diameter: $\Phi 22\text{mm}$
- ⊙ Operation Type: Push - Pull Emergency stop switch
- ⊙ Max Rating: Ith:10A, Ui:660V
- ⊙ Switch Rating: 250V 3A
- ⊙ Contact Configuration(□): 01/02/10/20/11
- ⊙ Terminal Type: Screw Terminal
- ⊙ IP Rating: IP65



LAS0-K-□YTS

- ⊙ Install Diameter: $\Phi 22\text{mm}$
- ⊙ Operation Type: Key Lock Emergency stop switch
- ⊙ Max Rating: Ith:10A, Ui:500V
- ⊙ Switch Rating: 250V 3A
- ⊙ Contact Configuration(□): 01/02/10/20/11
- ⊙ Terminal Type: Screw Terminal
- ⊙ IP Rating: IP65



Operating Temp	-25°C~+55°C (No freezing)
Operating Humidity	45~85%RH(No condensation)
Insulation Resistance	≥1000MΩ
Dielectric Intensity	1890V, AC50Hz, 5 Second
Anti-vibration	50Hz, Amplitude about 1.2mm
Anti-vandal	Over 10g
Soldering Temp	320°C(No more than 2 Second)
Mechanical Life	≥200,000 times
Electrical Life	≥50,000times

中国·红波按钮制造有限公司
ONPOW PUSH BUTTON MANUFACTURE CO.,LTD.
(原浙江红波按钮制造有限公司)

地址: 浙江省乐清市象阳四板桥工业区
 Add: Sibanqiao Industrial Zone, Xiangyang, Yueqing, Zhejiang, China
 Tel: 0577-62627272 62628282 62621532
 Fax: 0577-62623304 Post: 325619
 Http://www.onpow.com Http://www.hongbo.cn
 E-mail: onpow@onpow.com hongbo@hongbo.cn
 全国销售热线: 400 811 5522



Install Dia.: Φ19
Head Dimension: Φ32
Contact(□): 11/22
Color: **R**
IP Rating: IP65

LAS1-AGQ-□TS



Install Dia.: Φ19
Head Dimension: Φ32
Contact(□): 11/22/33
Color: **R**
IP Rating: IP65

LAS1-BGQ-□TS



Install Dia.: Φ22
Head Dimension: Φ32
Contact(□): 11/22
Color: **R**
IP(◎): IP40/IP65

LAS1-APY-□TS/◎



Install Dia.: Φ16
Head Dimension: Φ24
Contact(□): 11/22
Color(△): **R G**
IP(◎): IP40/IP65

LAS1-AY-□TS/△/◎



Install Dia.: Φ16
Head Dimension: Φ32
Contact(□): 11/22/33
Color(△): **R**
Voltage(▲): 6/12/24/
110/220V
IP Rating: IP40

LAS1-BY-□TSA/△
LAS1-BY-□TSA/△/▲



Install Dia.: Φ16
Head Dimension: Φ32
Contact(□): 11/22/33
Color(△): **R**
IP Rating: IP40

LAS1-BY-□TSB/△



Install Dia.: Φ22,25
Head Dimension: Φ40
Contact(□): 01/11/22
Color(△): **R G**
IP(◎): IP40/IP65

LAS0-K-□TSA/△/◎



Install Dia.: Φ22,25
Head Dimension: Φ40
Contact(□): 01/11/22
Color(△): **R**
IP Rating(◎): IP40

LAS0-K-□TSB/◎

Can be illuminated



Install Dia.: Φ30
Head Dimension: Φ36
Contact(□): 01/11/22
Color(△): **R G**
IP Rating: IP40

LAS0-K30-□TS/△



Install Dia.: Φ22,25
Head Dimension: Φ36
Contact(□): 01/11/22
Color(△): **R G**
IP Rating: IP40

LAS0-A1Y-□TS/△



Install Dia.: Φ22,25
Head Dimension: Φ36
Contact(□): 01/11/22
Color(△): **R G**
IP Rating: IP40

LAS0-A3Y-□TS/△



Install Dia.: Φ22,25
Head Dimension: Φ36
Contact(□): 01/11/22
Color(△): **R G**
IP Rating: IP40

LAS0-B1Y-□TS/△



Install Dia.: Φ22,25,30
Head Dimension: Φ30/Φ40
Contact(□): 01/11/22
Color(△): **R G**
Voltage(▲): 6/12/24/
110/220V
IP Rating: IP40

LAS0-Q-□TS/△/▲

Can be illuminated



Install Dia.: Φ22,25,30
Head Dimension: Φ30/Φ40
Contact(□): 01/11/22
Color(△): **R G**
Voltage(▲): 6/12/24/
110/220V
IP Rating: IP40

Y090-□TS/△
Y090-□TS/△/▲

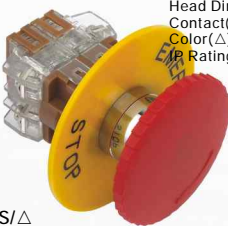
Can be illuminated



Install Dia.: Φ22,25,30
Head Dimension: Φ30/Φ40
Contact(□): 01/11/22
Color(△): **R G**
Voltage(▲): 6/12/24/
110/220V
IP Rating: IP40

Y090E-□TS/△
Y090E-□TS/△/▲

Can be illuminated



Install Dia.: Φ22
Head Dimension: Φ35/Φ60
Contact(□): 11/22
Color(△): **R G**
IP Rating: IP40

LAY3-□TS/△



Install Dia.: Φ22
Head Dimension: Φ30,40,60
Contact(□): 01/02/11
Color(△): **R G**
IP(◎): IP40/IP65

HBY5-□TS/△/◎



Install Dia.: Φ22,25
Head Dimension: Φ30,40,60
Contact(□): 01/02/11
Color(△): **R G**
IP(◎): IP40/IP65

HBY5E-□TS/△/◎



Install Dia.: Φ22,25
Head Dimension: Φ40
Contact(□): 11/22
Color(△): **R G**
Voltage(▲): 6/12/24/
110/220V
IP Rating: IP40

HB22-□TS/△/▲

Can be illuminated



Install Dia.: Φ25
Head Dimension: Φ40
Contact(□): 11/22
Color(△): **R G**
IP Rating: IP40

HB25-□TS/△



Install Dia.: Φ30
Head Dimension: Φ46
Contact(□): 11/22
Color(△): **R G**
IP Rating: IP40

HB30-□TS/△