

KW10型微動開關系列 Micro switch series

◆ 動作靈敏的超小型開關 Action sensitive subminiature switch

- 超小型，大電流。具有微小觸點間隙，快速動作、高靈敏和微小動作行程的特點。

Minitype, big current. Characteristic: small contact gap, quick action, high sensitivity and small operating travel

- 長壽命

Long life

- 多種接線端子

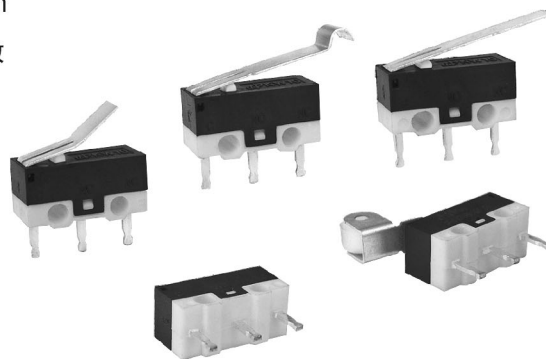
Variety of contact terminals

- 多種形式動臂

Variety of levers

- 適用於家用電器、音視頻設備、計算機、辦公自動化設備及通訊設備等。

Widely used in appliance, audio video device, computer, office automation equipment, communication equipment, etc.



KW10

◆ 技術特性 Specifications

項目 Item		特性值 Value
工作速度 Operating speed		1mm ~ 500mm/s (與驅動方式有關)(Related with actuator forms)
工作頻率 Operating frequency		機械 60次/min; 電氣 25次/min Mechanical 60 cycles/min; Electrical 25cycles/min
絕緣電阻 Insulation resistance		≥100MΩ (500VDC)
接觸電阻 Contact resistance		動作力>0.75N: ≤30mΩ(見注) 動作力≤0.75N : ≤50mΩ(見注) OF>0.75N: ≤30mΩ (see note) OF≤0.75N: ≤50mΩ (see note) KW10-D、E、F型: ≤100mΩ(見注)
耐電壓 Test voltage	同極不相接端子間 Between terminals of the same polarity	AC600V, 50/60Hz, 1min
	帶電金屬零件與地(外殼)之間、 接線端與不帶電金屬件之間 Between current-carrying metal parts and ground(case), and between each terminal and non-current-carrying metal parts.	AC1000V, 50/60Hz, 1min
抗振動 Vibration resistance		10 ~ 55Hz, 1.5mm 兩倍振幅 Double amplitude
抗衝擊 Shock resistance		故障: 300m/s ² (約30G)max Malfunction: 300m/s ² (approx. 30G)max
壽命 Life expectancy		機械 ≥1000000次; Mechanical ≥1000000 cycles 電氣 3A: ≥10000次 Electrical ≥10000cycles ≤1A: ≥100000次
質量 Weight		約0.6g(無動臂型) Approx. 0.6g(No lever)

注：指無動臂時按鈕上的動作力。 Note: Shows the operating force of no lever.

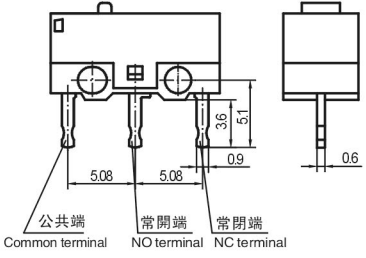
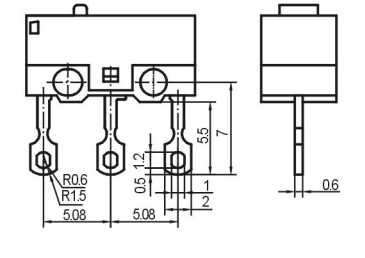
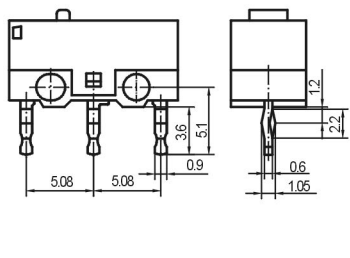
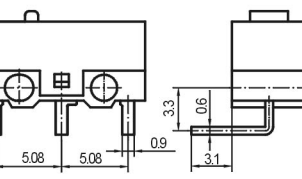
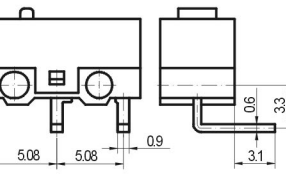
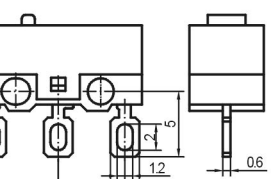
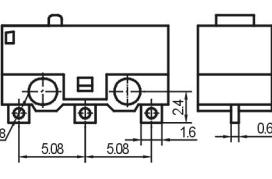
◆ 型號規格命名及含義 Model specs naming and meanings

KW10 - □ □ □ □ □ - (□)
 1 2 3 4 5 6

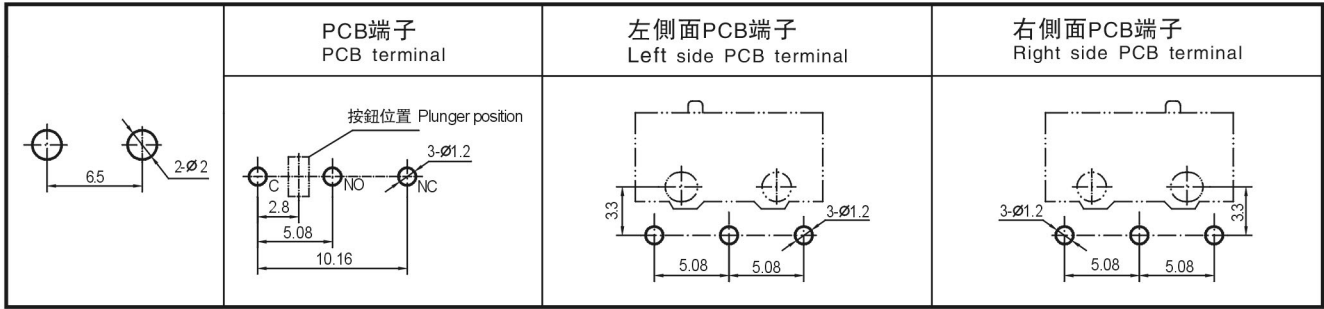
KW10

1 額定值 Ratings	無標記: 3(0.5)A250V/3A125VAC No mark C:1(0.5)A250VAC/1A250VAC D:0.5(0.2)A250VAC/0.5A125VAC E:0.3(0.1)A250VAC/0.3A125VAC F:0.1(0.05)A250VAC/0.1A125VAC	4 端子類型 Terminal types	F: 焊接端子 Solder terminal G: 長焊接端子 Long solder terminal P: PCB端子 PCB terminal L: 左側面PCB端子 Left side PCB terminal R: 右側面PCB端子 Right side PCB terminal S: 自固定PCB端子 Self-clinching PCB terminal Y: 非標準端子 Not standard terminal
2 接觸形式 Connect forms	Z-轉換式 Z-SPDT T-常開(按通)式 T-SPST-NO D-常閉(按斷)式 D-SPST-NC	5 動作力(max) Operating force	045 : 0.45N 075 : 0.75N 150 : 1.5N 250 : 2.5N 注: 若是非標準動作力, 用此動作力上限值表示。 Note: If it is not standard operating force, indicate with the upper limit.
3 驅動形式 Actuator forms	0: 無動臂 No lever 1: 短動臂 Short lever 2: 長動臂 Long lever 3: 中動臂 Middle lever 5: 滾輪臂 Roller 6: 長弧形動臂 Long arc lever 8: 短弧形動臂 Short arc lever □: 非標準動臂 Not standard lever 注: □表示非標準動臂的代號 Indicate not standard lever,	6 附加規格編號, 適用於: Additional spec numbers, Apply to:	1)當開關使用了非標準零件如非標準端子等時; When used not standard parts such as not standard terminal; 2)當顧客有特殊動作特性值或其它要求時。 When customer has particular operating value or other require ments. 附加規格編號用兩位阿拉伯數字表示, 如01、02、03……在沒有附加規格編號時, 該位置空缺。 Additional spec number shows as 01, 02, 03……If there is no additional numbers, the place is vacant.

◆ 接線端尺寸 Terminal dimensions

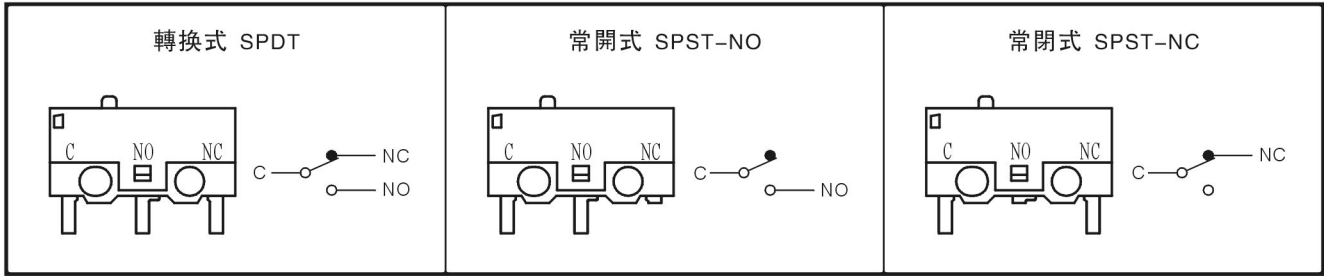
<p>PCB端子 PCB terminal</p> <p>P</p> 	<p>長焊接端子 Long solder terminal</p> <p>G</p> 	<p>自固定PCB端子 Self-clinching PCB terminal</p> <p>S</p> 	
<p>左側面PCB端子 Left side PCB terminal</p> <p>L</p> 	<p>右側面PCB端子 Right side PCB terminal</p> <p>R</p> 	<p>焊接端子 Solder terminal</p> <p>F</p> 	<p>焊接小型端子 Minitype solder terminal</p> <p>H</p> 

◆ 安裝孔尺寸 Mounting hole dimensions

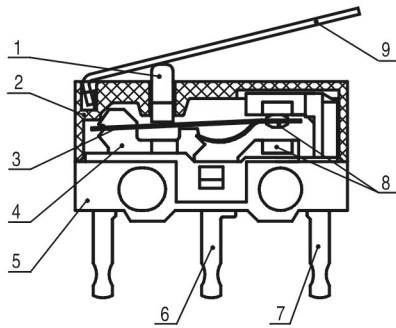


KW10

◆ 接觸形式說明圖 Connect forms illumination



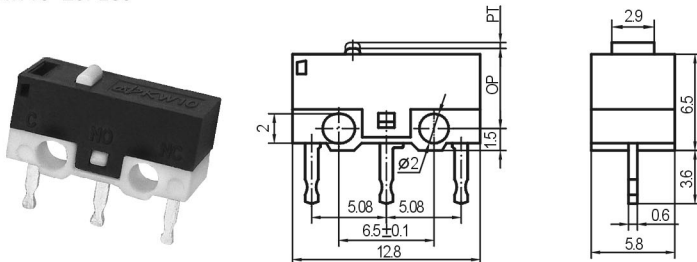
◆ 內部構造圖 Internal configuration drawing



- 1: 開關子(按鈕) Plunger
- 2: 蓋 Cover
- 3: 可動片 Moving piece
- 4: 支架 Support
- 5: 底座 Case
- 6: 常開端子 NO terminal
- 7: 常閉端子 NC terminal
- 8: 電觸點 Contact
- 9: 動臂 Moving arm

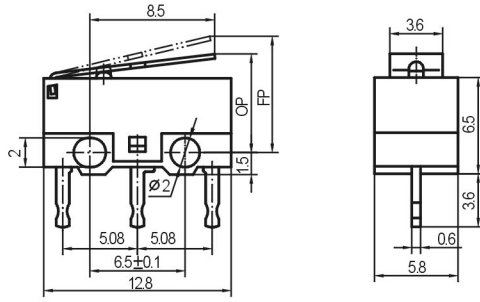
◆ 外形尺寸和動作特性 Dimensions and operating characteristics

KW10-Z0P075
KW10-Z0P150
KW10-Z0P250



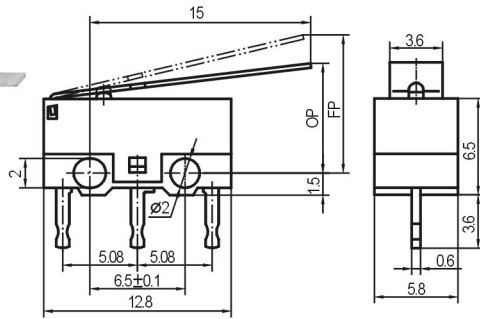
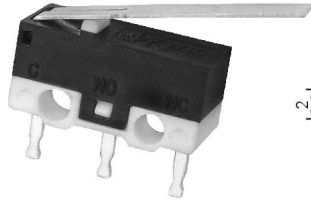
型號 Model	KW10-Z0P075	KW10-Z0P150	KW10-Z0P250
OF Max(N)	0.75	1.50	2.50
RF Min(N)	0.05	0.08	0.40
PT Max(mm)	0.5		
OT Min(mm)	0.2		
MD Max(mm)	0.2		
OP(mm)	5.5 ± 0.3		

KW10-Z1P075
 KW10-Z1P150
 KW10-Z1P250



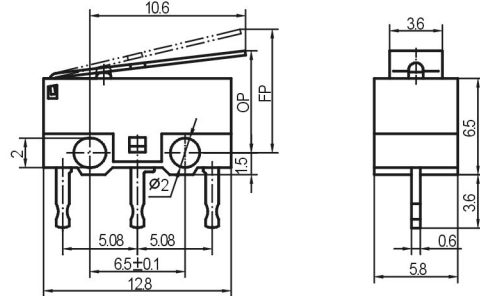
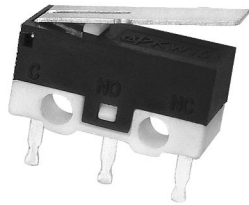
型號 Model	KW10-Z1P075	KW10-Z1P150	KW10-Z1P250
OF Max(N)	0.26	0.53	0.90
RF Min(N)	0.04	0.08	0.15
OT Min(mm)	0.6		
MD Max(mm)	0.6		
FP Max(mm)	9.0		
OP(mm)	6.7 ± 1		

KW10-Z2P075
 KW10-Z2P150
 KW10-Z2P250



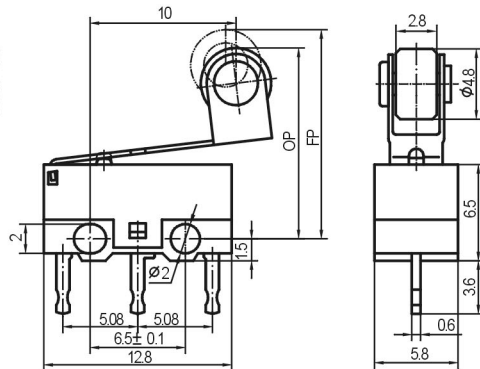
型號 Model	KW10-Z2P075	KW10-Z2P150	KW10-Z2P250
OF Max(N)	0.17	0.33	0.55
RF Min(N)	0.02	0.04	0.08
OT Min(mm)	1.0		
MD Max(mm)	1.0		
FP Max(mm)	10.0		
OP(mm)	7.6 ± 1.5		

KW10-Z3P075
 KW10-Z3P150
 KW10-Z3P250



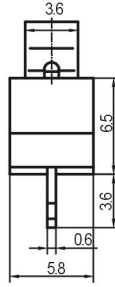
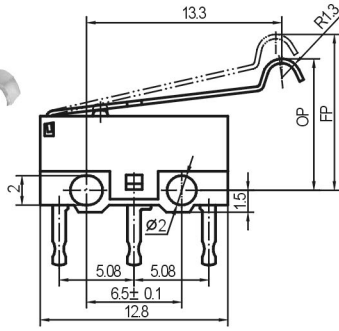
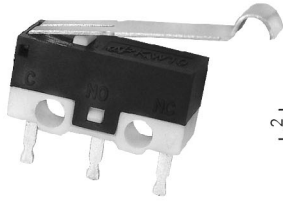
型號 Model	KW10-Z3P075	KW10-Z3P150	KW10-Z3P250
OF Max(N)	0.23	0.45	0.75
RF Min(N)	0.03	0.06	0.12
OT Min(mm)	0.7		
MD Max(mm)	0.7		
FP Max(mm)	9.5		
OP(mm)	7 ± 1.2		

KW10-Z5P075
 KW10-Z5P150
 KW10-Z5P250



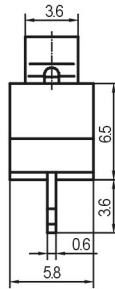
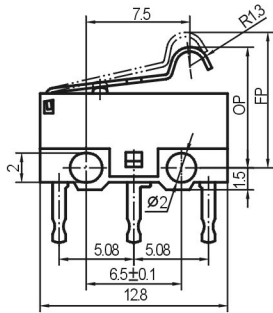
型號 Model	KW10-Z5P075	KW10-Z5P150	KW10-Z5P250
OF Max(N)	0.23	0.46	0.77
RF Min(N)	0.02	0.05	0.10
OT Min(mm)	0.7		
MD Max(mm)	0.7		
FP Max(mm)	16.5		
OP(mm)	13 ± 1.5		

KW10-Z6P075
 KW10-Z6P150
 KW10-Z6P250



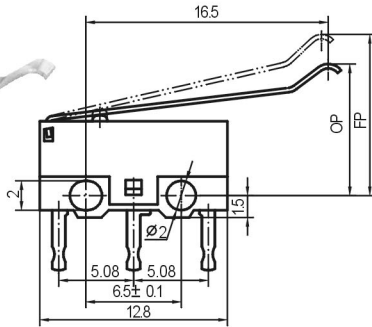
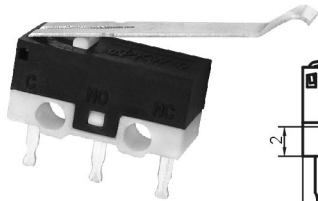
型號 Model	KW10-Z6P075	KW10-Z6P150	KW10-Z6P250
OF Max(N)	0.18	0.36	0.60
RF Min(N)	0.02	0.05	0.10
OT Min(mm)	0.9		
MD Max(mm)	0.9		
FP Max(mm)	11.5		
OP(mm)	8.8 ± 1.5		

KW10-Z8P075
 KW10-Z8P150
 KW10-Z8P250



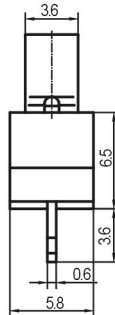
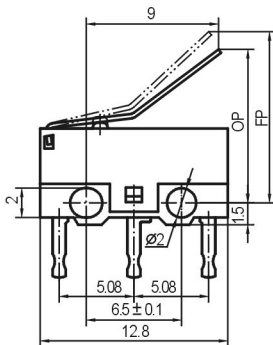
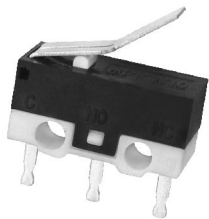
型號 Model	KW10-Z8P075	KW10-Z8P150	KW10-Z8P250
OF Max(N)	0.30	0.60	1.00
RF Min(N)	0.03	0.06	0.12
OT Min(mm)	0.6		
MD Max(mm)	0.6		
FP Max(mm)	10.5		
OP(mm)	7 ± 1.5		

KW10-ZEP075
 KW10-ZEP150
 KW10-ZEP250



型號 Model	KW10-ZEP075	KW10-ZEP150	KW10-ZEP250
OF Max(N)	0.15	0.30	0.50
RF Min(N)	0.02	0.05	0.10
OT Min(mm)	1.1		
MD Max(mm)	1.0		
FP Max(mm)	11.5		
OP(mm)	8.5 ± 1.5		

KW10-ZBP075
 KW10-ZBP150
 KW10-ZBP250



型號 Model	KW10-ZBP075	KW10-ZBP150	KW10-ZBP250
OF Max(N)	0.25	0.50	0.80
RF Min(N)	0.02	0.05	0.10
OT Min(mm)	0.6		
MD Max(mm)	0.6		
FP Max(mm)	12.5		
OP(mm)	10.5 ± 1.5		