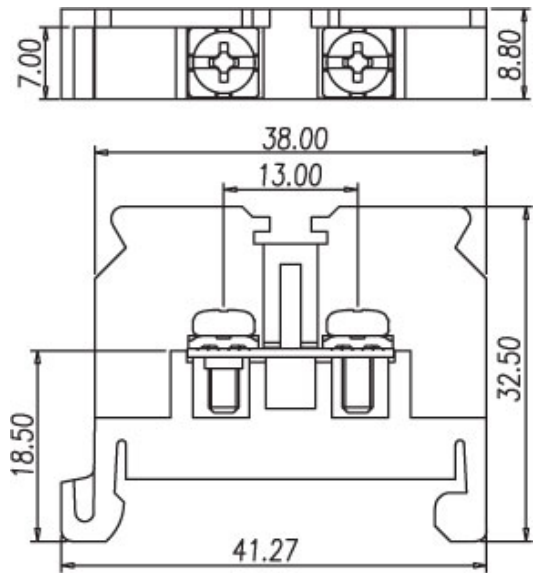


Rail Mount Design / DKB series



DKB10



Pitch: 8.8mm

| | | | |
|-----------------------|-----------|-----|-----|
| Approval | RI | | FW2 |
| Technical Data | UL | IEC | |
| Rated Voltage | 600V | | |
| Rated Current | 15A | | |
| Applicable Wire (AWG) | 22~14 | | |
| Torque (Lb-in) | 4.4 | | |
| Screw | M3 | | |
| Housing Material | PC | | |
| | | | |
| | | | |
| | | | |
| | | | |
| | | | |
| | | | |

TEL: +886-2-2908-0614

FAX: +886-2-2908-8549

E-mail: infor@dinkle.com.tw