

- Material acc. to DIN 17660: Cu Zn 39 Pb 3
- Min. tensile strength: 430 N/mm<sup>2</sup>
- Surface finish acc. to DIN 267: nickel plated (G 3 E)
- Material number: 2.0401
- Tolerance for length dimensions: +/- 0.1 mm
- All articles are also available without undercut.

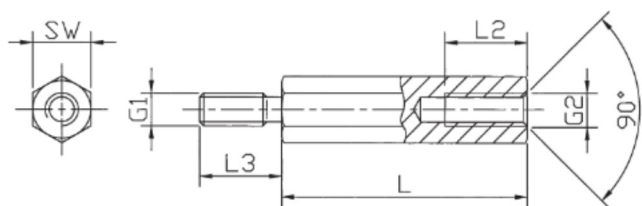
**- Available from stock. Delivery times for intermediate lengths and special versions upon request.**



## Standard range - spacer bolts [ Brass, nickel plated ]



**EXECUTION DIA** [ Internal / external thread ]



**Internal thread lengths** [ mm ]

L	L2 at M2.5 to M5	L2 at M2	L2 at M6
5	3	3	
6	4	4	
8	5	5	
10	6	6	6
12	7	6	7
15	10	6	10
18	10	6	10
from 20	10	6	12



**External thread lengths** [ mm ]

G1=G2	L3
M2	5
M2,5	6
M3	6+8
M4	8
M5	8
M6	10



Order No.	Execution	Material	SW* (hexagon)	Thread	Standard lengths in mm
211 x (length)	DIA	Brass	SW4	M2	5, 6, 8, 10, 12, 15, 18, 20, 25, 30, 35, 40, 45, 50
2112 x	DIA	Brass	SW4	M2.5	5, 6, 8, 10, 12, 15, 18, 20, 25, 30, 35, 40, 45, 50
212 x	DIA	Brass	SW5	M2.5	5, 6, 8, 10, 12, 15, 18, 20, 25, 30, 35, 40, 45, 50, 55, 60
213 x	DIA	Brass	SW5	M3	5, 6, 8, 10, 12, 15, 18, 20, 25, 30, 35, 40, 45, 50, 55, 60
214 x	DIA	Brass	SW5.5	M3	5, 6, 8, 10, 12, 15, 18, 20, 25, 30, 35, 40, 45, 50, 55, 60, 65, 70
216 x	DIA	Brass	SW7	M4	5, 6, 8, 10, 12, 15, 18, 20, 25, 30, 35, 40, 45, 50, 55, 60, 65, 70, 75, 80, 85, 90, 95, 100
218 x	DIA	Brass	SW8	M5	8, 10, 12, 15, 18, 20, 25, 30, 35, 40, 45, 50, 55, 60, 65, 70, 75, 80, 85, 90, 95, 100
219 x	DIA	Brass	SW10	M6	10, 12, 15, 18, 20, 25, 30, 35, 40, 45, 50, 55, 60, 65, 70, 75, 80, 85, 90, 95, 100

\*SW: width across flats

**Ordering example:** 211 x 10 = DIA / Ms / SW4 / M2 x 10

Articles 213 and 214 also come in an ext. thread length of 6 mm. In this case the article number has the suffix „K“

**Example:** 213 x 10K = DIA / Ms / SW5 / M3 x 10 (6)

