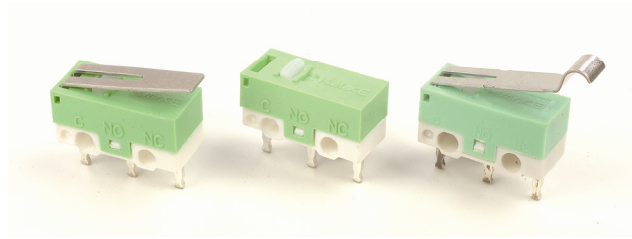


SNAP ACTION SWITCH

Features

- Ultra small type, light weight.
- Terminals are insert molded against flux penetration during soldering.
- Good feeling and more levers are applied.



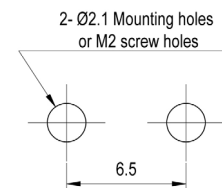
Applications

- Operating in all types of electronic equipment such as appliances, audio, mouse, office, equipment, communications apparatus, etc.

Specifications

Item	Standard
Rating	3A 125V AC or 1A 250V AC
Insulation Resistance	100MΩ min. (DC 500V)
Dielectric Strength	AC 500V (50/60Hz for 1 minute)
Contact Resistance	50mΩ max.
Electrically Life	30,000 cycle

Mounting Hole



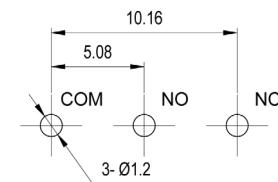
Product Selection

DH- 05 P
1

1. ACTUATOR TYPES

- 0: Pin plunger
- 1: Hinge lever
- 4: Simulated roller lever

For P.C.B. Terminal



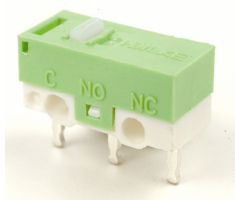
Operating Characteristics

Item NO.

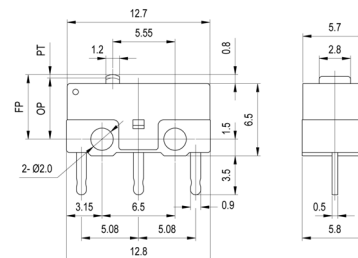
Unit :mm

Dimension

DH050P



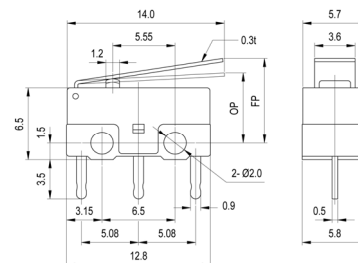
OF	max.	150g
RF	min.	20g
PT	max.	0.5 mm
OT	min.	0.25 mm
MD	max.	0.12mm
OP		5.5±0.3 mm



DH051P



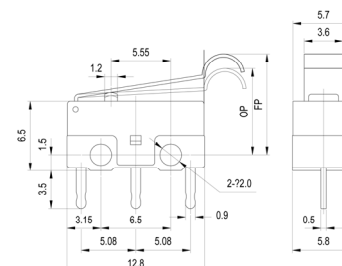
OF	max.	80g
RF	min.	5g
PT	max.	-
OT	min.	0.55 mm
MD	max.	0.5mm
OP		6.8±1.5 mm



DH054P



OF	max.	80g
RF	min.	5g
PT	max.	-
OT	min.	0.55 mm
MD	max.	0.5mm
OP		8.8±1.5 mm



HIGHLY

B19

Design, specifications are subject to change without notice.