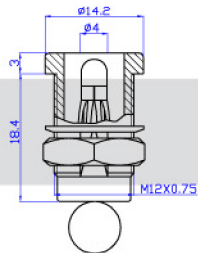


24.381.*

24.382.*

24.383.*

24.384.*



24.391.*

24.392.*

24.393.*

24.394.*

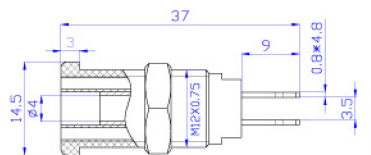
Model.		Material	Rated voltage/current
24.381.*	24.391.*	Insulator:PA Body:Brass Surface:Nickel plated	CATIII 1000V/Max.32A
24.382.*	24.392.*		CATIII 1000V/Max.24A
24.383.*	24.393.*		CATIII 1000V/Max.32A
24.384.*	24.394.*		



24.260.*



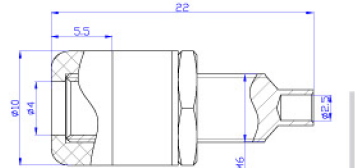
Material
Insulator:PA
Body:Brass
Surface:Nickel plated
Rated voltage/current
CATIII 1000V/Max.32A



24.247.*



Material
Insulator:ABS
Body:Brass
Surface:Nickel plated
Rated voltage/current
30Vac-60Vdc/Max.24A



24.246.*



Material
Insulator:ABS
Body:Brass
Surface:Nickel plated
Rated voltage/current
30Vac-60Vdc/Max.19A

