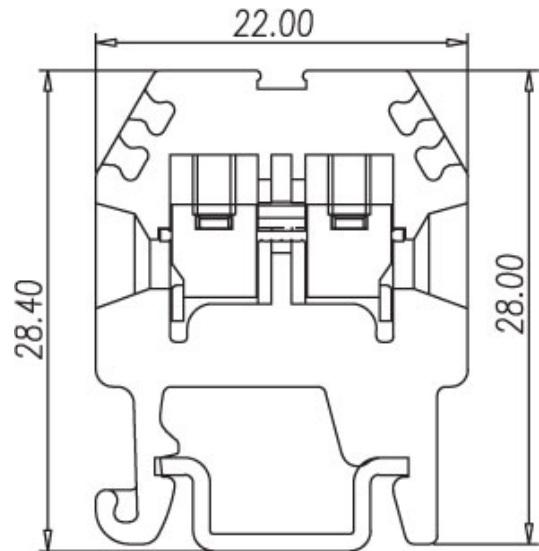
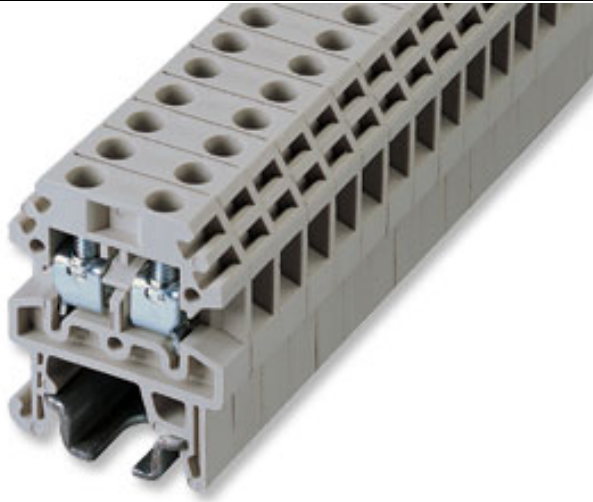




DIN Rail terminal blocks / DK..S series



DK2.5S



Approval	 	
Technical Data	UL	IEC
Rated voltage	300V	500V
Rated current	20A	24A
Conductor cross-section, solid (AWG / mm ²)	22~12 / 0.5~2.5	
Conductor cross-section, flexible (AWG / mm ²)	22~12 / 0.5~2.5	
Rated impulse withstand voltage	5KV	
Torque (N-m)	0.4	
Screw	M2.5	
Wire strip length	7~9mm	
Insulating material	PA	
TxHxW (mm)	5.1x28x22	
Optional color	Cat. No.	
●	DK2.5S-RD	
●	DK2.5S-BL	
●	DK2.5S-BK	
●	DK2.5S-OR	



	Accessories	Cat. No.
End cover		DK2.5PC
Partition		
Small partition		
Insertion bridge	2 way	
	3 way	
	4 way	
	10 way	
Insertion bridge	2 way	CSC-2.502S
	3 way	CSC-2.503S
	4 way	CSC-2.504S
	10 way	CSC-2.510S
Screw-on bridge	2 way	
	3 way	
	4 way	
	10 way	
Marking label		TM20
Mounting Rail		TS-15
Tool		