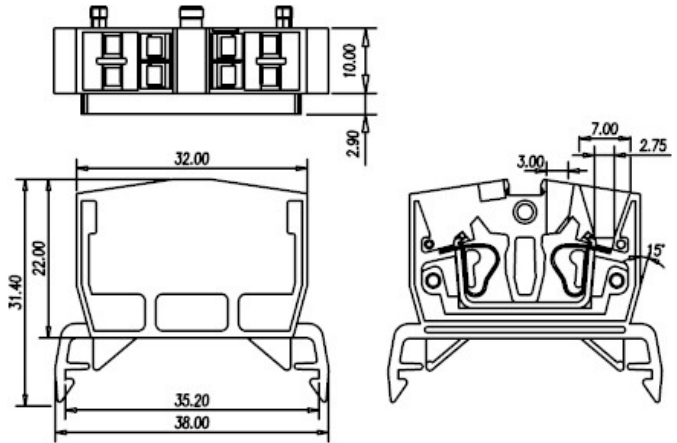
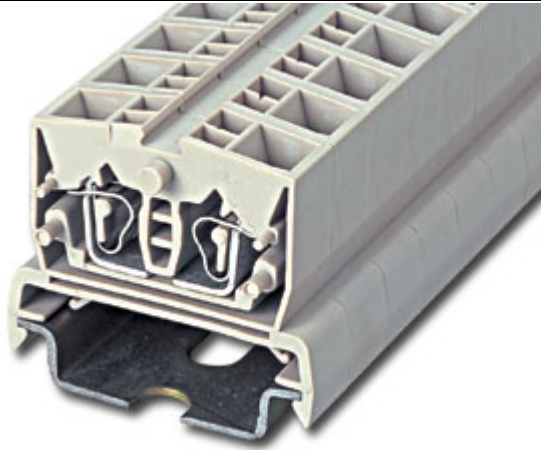


Spring Type DIN Rail Terminal Blocks / AK..P series



AK2.5PP-01X



Approval		
Technical Data	UL	IEC
Rated voltage	600V	800V
Rated current	25A	24A
Conductor cross-section, solid (AWG / mm ²)	28~12 / 0.5~2.5	
Conductor cross-section, flexible (AWG / mm ²)	14~12 / 0.5~2.5	
Rated impulse withstand voltage	8KV	
Torque (N-m)		
Screw		
Wire strip length	8~9mm	
Insulating material	PA	
TxHxW (mm)	5.1 x 31.4 x 38	
Optional color	Cat. No.	
	AK2.5PP-01X-RD	
	AK2.5PP-01X -BL	
	AK2.5PP-01X -BK	
	AK2.5PP-01X -OR	
	AK2.5PP-01X -YG	



	Accessories	Cat. No.
End cover		AK2.5PC
Insertion bridge	2 way	C000007000
Marking label		TM20
Mounting Rail		TS-35
Tool		0.4 x 2.5mm