

DC Power Plug Series

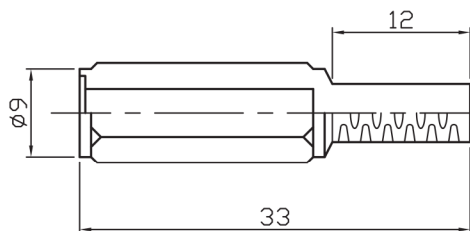
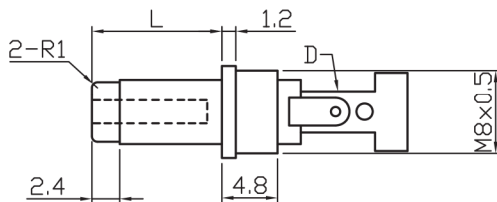
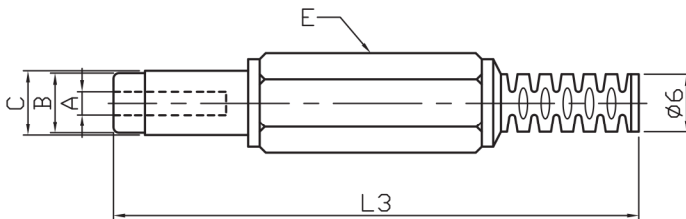
KLS1-DCP-02 (DC Plug)

Technical parameters:

Contact resistance: 0.03Ω, max
 Insulation resistance: 100MΩ, min
 Pressure: AC500V (50Hz) / 1minute
 Rated Load: DC30V,1.0A
 Actuating Force: 3~20N
 Life: 5000 times
 Operating Temperature:-30°C ~ 70°C

Material:

Housing Material: PBT or PA66
 Center Pin Material: Brass



| Part No. | A(mm) | C(mm) | L(mm) |
|----------|-------|-------|-------|
| 1.1A | 1.1 | 3.5 | 9 |
| 1.1B | 1.1 | 3.8 | 9 |
| 1.3A | 1.3 | 3.5 | 9 |
| 2.1A | 2.1 | 5.5 | 9 |
| 2.1B | 2.1 | 5.5 | 14 |
| 2.5A | 2.5 | 5.5 | 9 |
| 2.5B | 2.5 | 5.5 | 14 |

ORDER INFORMATION

Product NO.: KLS1-DCP-02-1.1A

