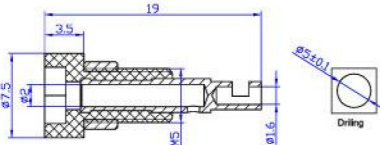


24.101. \*



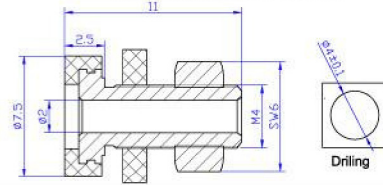
**Material**  
 Insulator:PA  
 Body:Brass  
 Surface:Gold plated  
**Rated voltage/current**  
 30Vac-60Vdc/Max.10A



24.106. \*



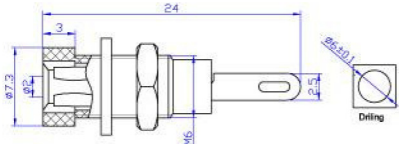
**Material**  
 Insulator:ABS  
 Body:Brass  
 Surface:Nickel plated  
**Rated voltage/current**  
 30Vac-60Vdc/Max.10A



24.102. \*



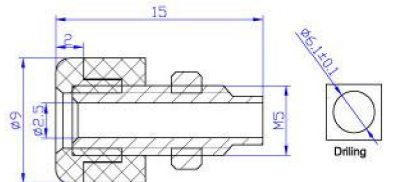
**Material**  
 Insulator:ABS  
 Body:Brass  
 Surface:Nickel plated  
**Rated voltage/current**  
 30Vac-60Vdc/Max.6A



24.107. \*



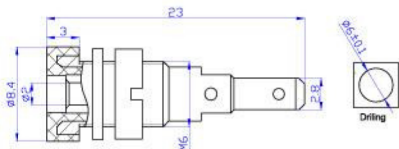
**Material**  
 Insulator:ABS  
 Body:Brass  
 Surface:Nickel plated  
**Rated voltage/current**  
 30Vac-60Vdc/Max.10A



24.103. \*



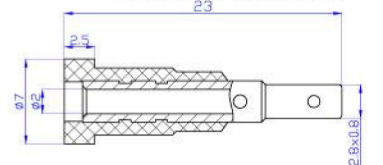
**Material**  
 Insulator:PA  
 Body:Brass  
 Surface:Nickel plated  
**Rated voltage/current**  
 30Vac-60Vdc/Max.10A



24.110. \*



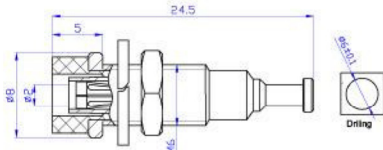
**Material**  
 Insulator:PA  
 Body:Brass  
 Surface:Gold plated  
**Rated voltage/current**  
 30Vac-60Vdc/Max.10A



24.104. \*



**Material**  
 Insulator:PA  
 Body:Brass  
 Surface:Nickel plated  
**Rated voltage/current**  
 30Vac-60Vdc/Max.10A



24.111. \*



**Material**  
 Insulator:PA  
 Body:Brass  
 Surface:Gold plated  
**Rated voltage/current**  
 30Vac-60Vdc/Max.10A

