

24.381.\*

24.382.\*

24.383.\*

24.384.\*

24.391.\*

24.392.\*

24.393.\*

24.394.\*

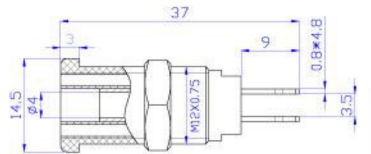
Model.		Material	Rated voltage/current
24.381.*	24.391.*	Insulator:PA Body:Brass Surface:Nickel plated	CATIII 1000V/Max.32A
24.382.*	24.392.*		CATIII 1000V/Max.24A
24.383.*	24.393.*		CATIII 1000V/Max.32A
24.384.*	24.394.*		



24.260.\*



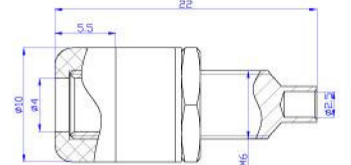
**Material**  
Insulator:PA  
Body:Brass  
Surface:Nickel plated  
**Rated voltage/current**  
CATIII 1000V/Max.32A



24.247.\*



**Material**  
Insulator:ABS  
Body:Brass  
Surface:Nickel plated  
**Rated voltage/current**  
30Vac-60Vdc/Max.24A



24.246.\*



**Material**  
Insulator:ABS  
Body:Brass  
Surface:Nickel plated  
**Rated voltage/current**  
30Vac-60Vdc/Max.19A

