

Gegenmuttern Kunststoff

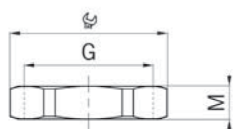
Synthetic lock nuts

1 Gewinde metrisch

Thread metric

Material: Polyamid glasfaserverstärkt
Einsatztemperatur: -40°C / +100°C

Material: Polyamide glass fiber reinforced
Temperature range: -40°C / +100°C



Hellgrau RAL 7035

Light grey RAL 7035

Art.-Nr.	G	mm	M mm	
8212	M12x1.5	17	5.5	100
8217	M16x1.5	22	5.5	100
8220	M20x1.5	26	6.5	100
8225	M25x1.5	32	7.0	100
8232	M32x1.5	41	7.0	100
8240	M40x1.5	50	7.0	50
8250	M50x1.5	60	8.5	10
8263	M63x1.5	75	8.5	10



Schwarz RAL 9005

Black RAL 9005

Art.-Nr.	G	mm	M mm	
8212.40	M12x1.5	17	5.5	100
8217.40	M16x1.5	22	5.5	100
8220.40	M20x1.5	26	6.5	100
8225.40	M25x1.5	32	7.0	100
8232.40	M32x1.5	41	7.0	100
8240.40	M40x1.5	50	7.0	50
8250.40	M50x1.5	60	8.5	10
8263.40	M63x1.5	75	8.5	10

4

5 Gewinde Pg

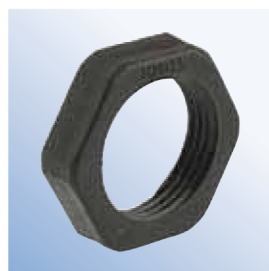
Thread Pg



Hellgrau RAL 7035

Light grey RAL 7035

Art.-Nr.	G	mm	M mm	
8207	Pg 7	19	5.0	100
8209	Pg 9	22	6.0	100
8211	Pg 11	24	6.0	100
8213	Pg 13	27	6.0	100
8216	Pg 16	30	6.0	100
8221	Pg 21	36	7.0	100
8229	Pg 29	46	7.0	50
8236	Pg 36	60	8.0	25
8242	Pg 42	65	8.0	25
8248.48	Pg 48	70	8.0	25



Gewinde Pg
Schwarz RAL 9005

Pg thread
Black RAL 9005

Art.-Nr.	G	mm	M mm	
8207.40	Pg 7	19	5.0	100
8209.40	Pg 9	22	6.0	100
8211.40	Pg 11	24	6.0	100
8213.40	Pg 13	27	6.0	100
8216.40	Pg 16	30	6.0	100
8221.40	Pg 21	36	7.0	100
8229.40	Pg 29	46	7.0	50
8236.40	Pg 36	60	8.0	25
8242.40	Pg 42	65	8.0	25
8248.48.40	Pg 48	70	8.0	25