

## Part-number Description

LAS1 - ★ - □ / ◇ / ◆● / △ / ▲ / ◎								
Code of series	Code name	Contact structure	Operation mode	Lamp type	◆ Operation position of selector and key-lock type: 2 Two position 3 Three position	Lamp color	Lamp voltage	The crust material
	BGQ	11 1NO1NC	Z Latching type	D Dot	● Operation position of selector and key-lock switch: 1 Maintain 2 Half return 3 Return	R Red	AC/DC 6V	S Stainless steel
	BGQ22	22 2NO2NC	W Micro-travel type	E Ring		G Green	AC/DC 12V	A Aluminium Alloy (Black anodized)
	BGQ25	33 3NO3NC	X Selector type			Y Yellow	AC/DC 24V	
	BGQ30	Different code name has different contact structure	Y Key-lock type			O Orange	AC/DC 110V	
			TS Emergency stop			B Blue	AC/DC 220V	
			No letter means momentary			W White	Note: Other voltage can be made to order	

Note: Pls read the catalog carefully, and choose the right part-number according to the sign.

2、LAS1-BGQ22、LAS1-BGQ25 can be written as GQ22、GQ25.

## Switch Rating

Rated Insulation Voltage Ui		250V			
Thermal Current Ith		3A			
Rated voltage		12V	24V	110V	220V
Rated Operation	AC 50/60Hz	Resistive load	—	5A	3A
		Inductive load	—	3A	2A
Current	DC	Resistive load	5A	1A	0.5A
		Inductive load	2A	0.2A	0.1A
Contact material		Silver Alloy			

Minimum load: 3V AC/DC, 5mA (Reference)

Application scope depends on operating environment and load type

## Lamp Ratings

Lamp Type	LED Lamp (AC/DC)
LED Color	R G Y O B W
Life	40000 hours (Reference)
Rated Voltage	AC/DC6V, AC/DC12V, AC/DC110V AC/DC24V, AC/DC36V, AC/DC220V
Rated Current	About 15mA; About 2mA
Dropping life	Inner resistance; Outer resistance when using 6V lamp.
Lamp Circuit Diagram	Using AC/DC LED lamp, the terminals have no difference of anode and cathode; Using inner resistance, do not need outer resistance

Note: DC LED and other voltage can be made to order.

## Certification



## Terminal Description

LAS1-BGQ(30)

LED Pin

(LAS1-B)GQ22

LED Pin

(LAS1-B)GQ25

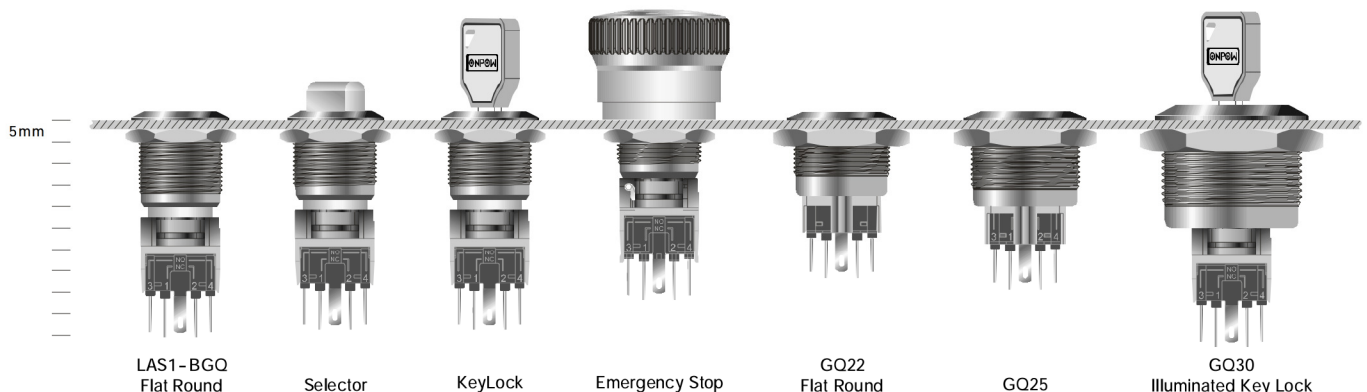
LED Pin

1,2,3,4 are one set; 1,2 are normal closed (NC); 3,4 are normal opened (NO).  
The standard LED terminals have no difference of anode and cathode.  
The lamp and switch are relatively independent and can use switch or peripheral circuit to control the lamp state.

## Switching Operation

Type	Za
Diagram and Sign	
Explanation: Using four terminals, double-break and fast-motion Changeover contact	

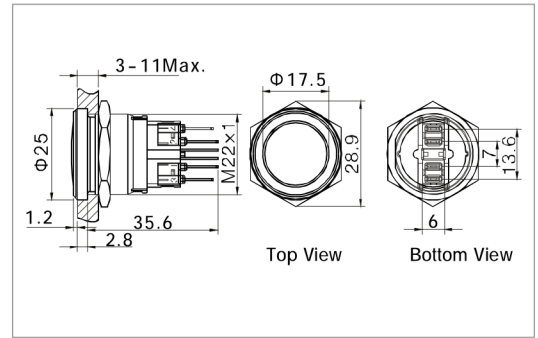
## Installation Effect



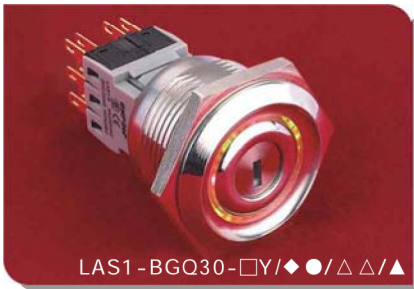
Anti-vandal body illuminated push button



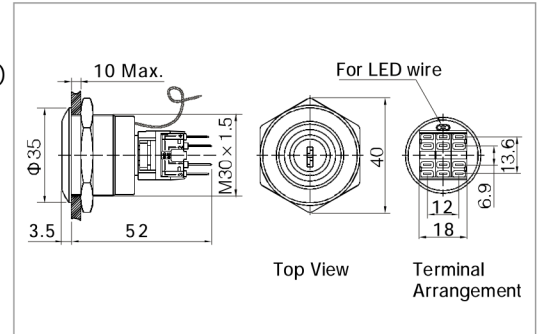
- ⊙ Φ 22mm Diameter
- ⊙ Switch Rating: Ith:5A, Ui:250V
- ⊙ Contact Configuration: 1NO1NC
- ⊙ Operation Type: Momentary
- ⊙ Body Illuminated
- ⊙ LED Color(Δ): **R G Y O B W**
- ⊙ LED Voltage(▲): 6V/12V/24V/110V/220V
- ⊙ The Crust Material: PC
- ⊙ IP Degree: IP65



Metal illuminated keylock switch

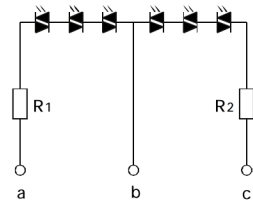


- ⊙ Φ 30mm Diameter
- ⊙ Switch Rating: Ith:5A, Ui:250V
- ⊙ Contact Configuration(□): 1NO1NC (11)  
2NO2NC(22)  
3NO3NC(33)
- ⊙ Operation Position(◆):  
Two Position(2) /Three Position(3)
- ⊙ Operation Type: (●): Remain(1)/  
Half return(2)/Return(3)
- ⊙ Ring illuminated
- ⊙ LED Color(Δ): **R G Y O B W**
- ⊙ LED Voltage(▲): 6V/12V/24V/110V/220V
- ⊙ IP Degree: IP40,IK03



Specification	GQ22-11E/△/▲/PC	LAS1-BGQ30-□Y/◆●/△▲/▲
The Front Shape	Flat Round	Key Lock
Terminal Type	Pin Terminal(2.8×0.5mm)	Pin Terminal(2.8×0.5mm)
Switching	Za(double-break fast-motion changeover contact)	Za(double-break fast-motion changeover contact)
Max. Switch Rating	Ith:5A Ui:250V	Ith:5A Ui:250V
Dielectric Intensity	2000VAC	2000VAC
Operating Temp	-20°C ~ +55°C	-20°C ~ +55°C
Mechanical Life	1,000,000 cycles	500,000 cycles
Electrical Life	50,000 cycles	50,000 cycles
Panel Thickness	1~8mm	1~10mm
Torque	5.5~7N	About 5.5N
IP Degree	IP65	IP40,IK03
Material	Contact	Silver Alloy
	Button	Stainless Steel
	Body	PC
	Base	PA
	RoHS	Made to order
LED	Type	Body illuminated(LED)
	Rated Voltage	6V / 12V / 24V / 110V / 220V
	Color	<b>R G Y O B W</b>
Spec.	Life	40000 hours

Diagram of the flame part



Implication:

- ⊙ Do not need connect outer resistance
- ⊙ Many LED color to choose
- ⊙ Special color through mixed flame color
- ⊙ Different select by changing contact open - close state

Flame display



Red Green Red&Green  
Note: usually to be red&greenLED, others colors can also be made

LAS1-BGQ State chart in operation	Switch Type	90° Two Position			180° Three Position			
		1NO1NC	2NO2NC	3NO3NC	2NO2NC	2NO2NC	2NO2NC	3NO3NC
	Operation Position							

GQ22,30