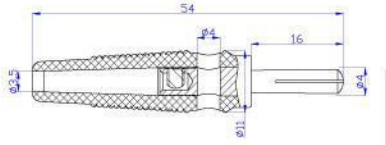


25.414. *



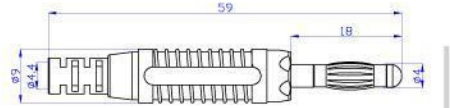
Material
 Insulator:PVC
 Body:Brass
 Surface:Nickel plated
 *Screw connection
Rated voltage/current
 30Vac-60Vdc/Max.32A



25.422. *



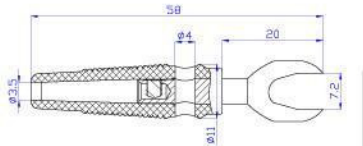
Material
 Insulator:PA
 Body:Brass
 Spring:Beryllium copper
 Surface:Gold plated
 *Solder connection
Rated voltage/current
 30Vac-60Vdc/Max.24A



25.415. *



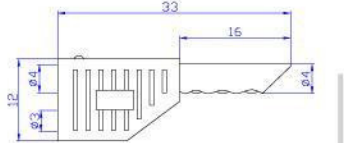
Material
 Insulator:PVC
 Body:Brass
 Surface:Nickel plated
 *Screw connection
Rated voltage/current
 30Vac-60Vdc/Max.24A



25.425. *



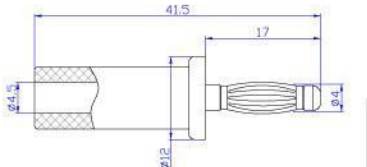
Material
 Insulator:PE
 Body:Beryllium copper
 Spring:Beryllium copper
 Surface:Gold plated
 *Solder connection
Rated voltage/current
 30Vac-60Vdc/Max.19A



25.420. *



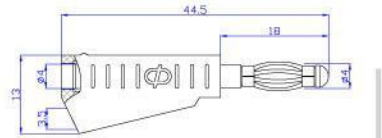
Material
 Insulator:ABS
 Body:Brass
 Surface:Nickel plated
 *Screw connection
Rated voltage/current
 30Vac-60Vdc/Max.24A



25.426. *



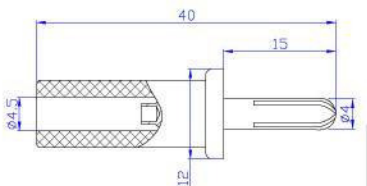
Material
 Insulator:PE
 Body:Brass
 Spring:Steel
 Surface:Nickel plated
 *Solder connection
Rated voltage/current
 30Vac-60Vdc/Max.19A



25.421. *



Material
 Insulator:ABS
 Body:Brass
 Surface:Nickel plated
 *Solder connection
Rated voltage/current
 30Vac-60Vdc/Max.24A



25.430. *



Material
 Insulator:PVC
 Body:Brass
 Surface:Nickel plated
 *Screw connection
Rated voltage/current
 30Vac-60Vdc/Max.24A

