

Data Sheet

Type Number 6206
Designation IEC CR 15H270
System Li-Manganese dioxide / Organic Electrolyte

UL Recognition:..... MH 13654 (N)
Nominal Voltage 3 V
Typical Capacity C 850 mAh
 Current 20 mA, at 20°C down to 1,8 V

Weight (approx.) 11 g
Volume 5,2 ccm

Temperature Ranges min max.
 Storage -20°C 45°C
 Discharge -20°C 60°C

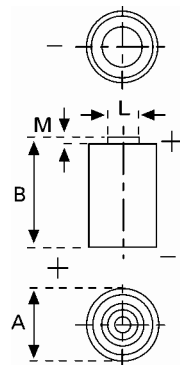
Dimensions min max.
 Diameter (A) 15,1 15,6
 Height (B) 26,3 27,0
 Shoulder Diameter[L]..... 6,2 6,4
 Shoulder Height [M]..... 0,7 1,3

Segment Electronic

Main Applications Photo
 Electronic Devices

Typical Capacities (at 20°C)

Discharge Type	Discharge Current	End Voltage:	1,8 V
Continuous 24h/d,7d/w	20 mA	Capacity [mAh]:	850



All Data contained herein is for single cells
 For battery applications, performance data may vary from single cell data, depending on specific battery configuration