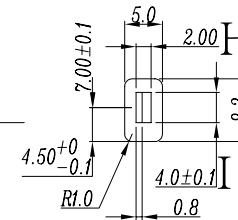
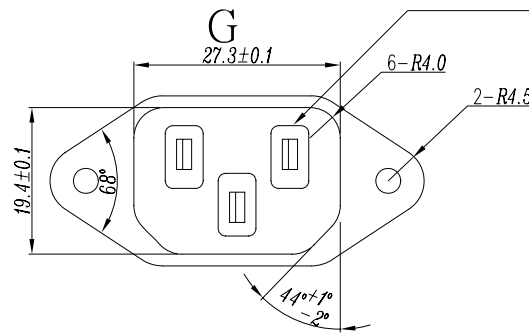
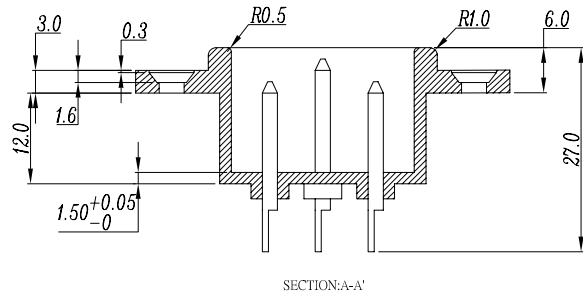


SPECIFICATION MODEL: KS-101

△ RATING: 15A 250VAC (UL/ CUL)
 10A 250VAC (VDE/CCC/SEMKO/
 DEMKO/FIMKO/NEMKO)
 INSULATION RESISTANCE: 100M Ω , DC 500V
 DIELECTRIC STRENGTH: 2000VAC FOR 1 MINUTE
 MEET UL 498 & IEC/EN60320 REQUIREMENTS



NOTE:
 MATERIAL: NAN YA 1403G3,PBT WITH 15%GF,UL 94V-0

REVISION	DESCRIPTION	REVISED BY	TOLERANCES .X±0.1 .XX±0.05		ANGLE 1/2	UNIT	mm	PART NAME	DWG NO
△2005.09.27	增加安規,重新出圖.	孫斌	DRAWN BY	梁春林	DESIGNED BY	梁春林	SCALE	1:1	KS-101 規格圖
△2005.08.22	標示端子孔尺寸	唐雙軍							
△2005.01.03	修改RATING內容.	余龍	CHECKED BY	梁春林	APPROVED BY	梁春林	DATE	2004/5/18	PART NO
△2004.04.21	更換圖框,首次出圖	梁春林							