

REV.	DESCRIPTION	DRAWN	CHECKED	APPROVED
A	NEW RELEASE	YCH 09/08/08'	~	

NOTES:

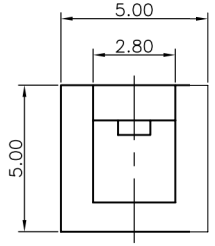
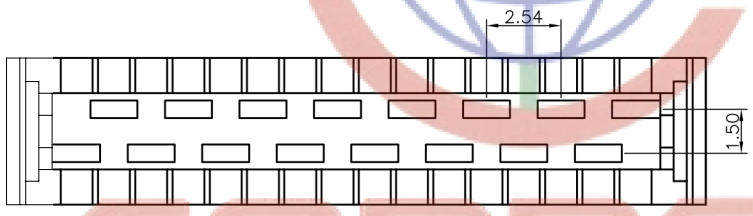
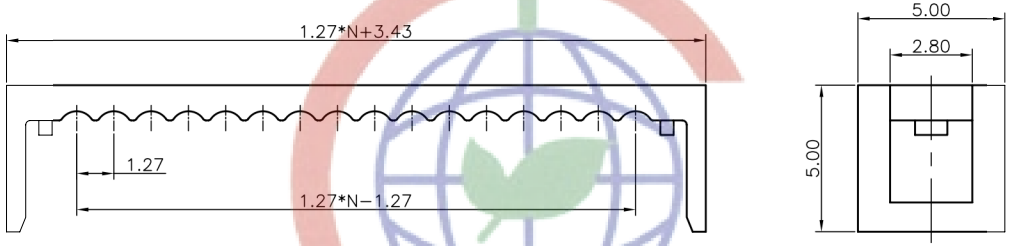
- MATERIAL
  - INSULATOR:THERMOPLASTIC(UL 94V-0).
  - CONTACT: COPPER ALLOY.
- SPECIFICATION
  - TEMPERATURE RANGE:-40-105°C.
  - CONTACT RESISTANCE:30mΩ max.
  - INSULATION RESISTANCE:1000MΩ min.
  - DIELECTRIC WITHSTANDING VOLTAGE:AC 500V PER MINUTE.

3. PRODUCT NUMBER CODE:

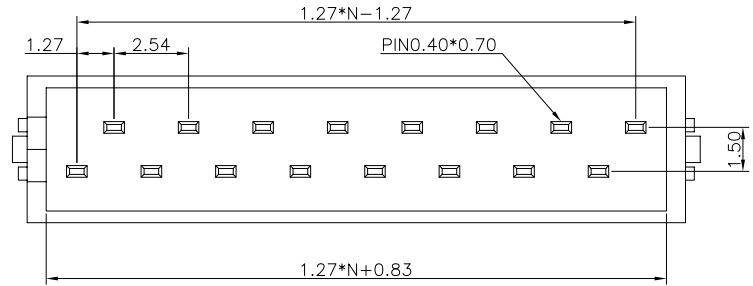
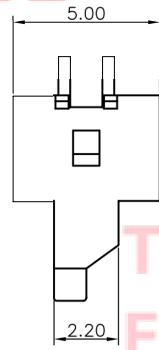
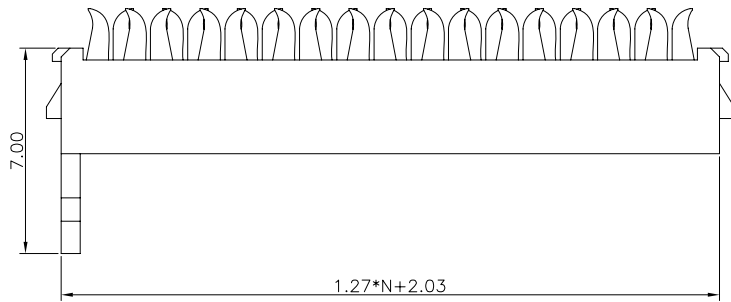
DS1015-01- X X X

- CONTACT PLATING
  - 2: NICKEL + GOLD FLASH
  - 6: FULL Tin
  - 8: FULL GOLD FLASH
- HOUSING COLOR
  - R:RED
- No. OF CONTACTS
  - 04 06 08 10 12
  - 14 16 18 20 24

Tel:86-574-63508787  
 Fax:86-574-63510817  
 E-mail:sale@zhenqin.com.cn  
 Http://www.connfly.com



COVER



HOUSING

GENERAL TOLERANCE		ANGLE TOLERANCE		PROJECTION		TITLE	RED IDC SERIES
X.	±0.60	X.	±5°	UNITS	mm		(MICRO MATCH CONNECTOR)
.X	±0.38	.X	±3°	SHEET SIZE	A4	SERIES	DS1015-01 SERIES
.XX	±0.25	.XX	±2°				
DRAWING TYPE		CUSTOMER		晨翔电子有限公司 <b>CONNFLY CONNFLY ELECTRONIC CO. LTD</b>			
SCALE	1:1	SHEET	1 OF 1				
DRAWING NO.	C-DS1015-01-XXX						