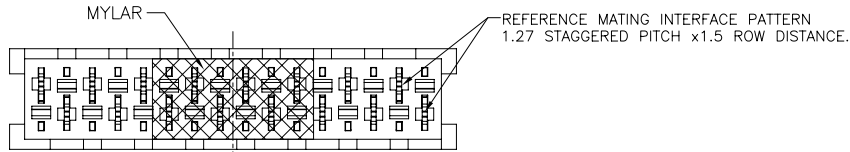


REV.	DESCRIPTION	DRAWN	CHECKED	APPROVED
A	NEW RELEASE	DGQ 06/14/11'		



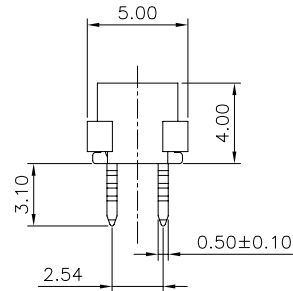
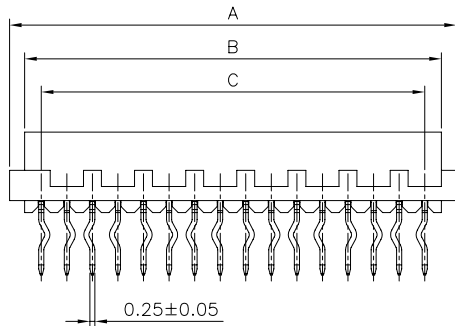
NOTES:

- MATERIAL
  - INSULATOR:PBT(UL 94V-0).
  - CONTACT: 0.25t COPPER ALLOY.
- SPECIFICATION
  - TEMPERATURE RANGE:-40~105°C.
  - CONTACT RESISTANCE:30mΩ max.
  - INSULATION RESISTANCE:1000MΩ min.
  - DIELECTRIC WITHSTANDING VOLTAGE:AC 500V PER MINUTE.

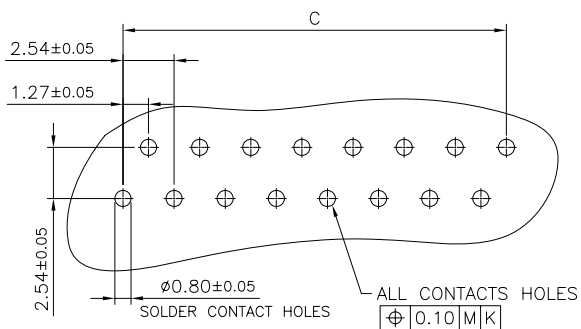
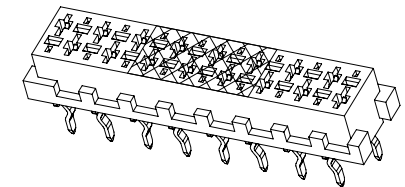
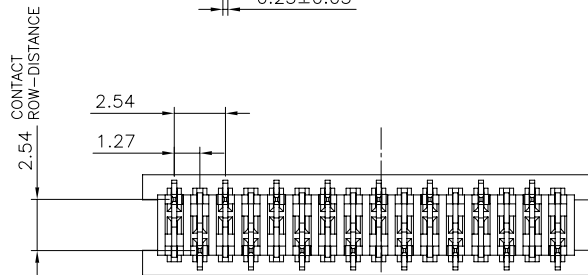
3. PRODUCT NUMBER CODE:

DS1015-04 - X X X X X X

- X X X X X X — PACKING TYPE
- T: TRAY
- MYLAR SUPPORT
- X: W/O MYLAR
- CONTACT PLATING
- 6: FULL MATT TIN
- HOUSING COLOR
- R: RED
- No. OF CONTACTS
- 04 06 08 10 12 14
- 16 18 20 22 24



POSITIONS	DIM A	DIM B	DIM C
4	6.96	5.46	3.81
6	9.50	8.00	6.35
8	12.04	10.54	8.89
10	14.58	13.08	11.43
12	17.12	15.62	13.97
14	19.66	18.16	16.51
16	22.20	20.70	19.05
18	24.74	23.24	21.59
20	27.28	25.78	24.13
22	29.82	28.32	26.67
24	32.36	30.86	29.21



GENERAL TOLERANCE	ANGLE TOLERANCE	PROJECTION		TITLE	MICRO MATCH FEMALE VERTICAL THROUGH HOLE TYPE
X. ±0.60	X. ±5°	UNITS	mm	SERIES	DS1015-04 SERIES
.X ±0.38	.X ±3°	SHEET SIZE	A4		
.XX ±0.25	.XX ±2°				
DRAWING TYPE	CUSTOMER	晨翔电子有限公司 <b>CONNFLY CONNFLY ELECTRONIC CO. LTD</b>			
SCALE	1:1 SHEET 1 OF 1				
DRAWING NO.	C-DS1015-04-XXXX-A				