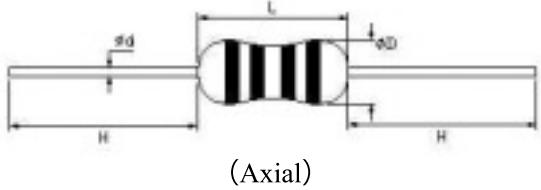
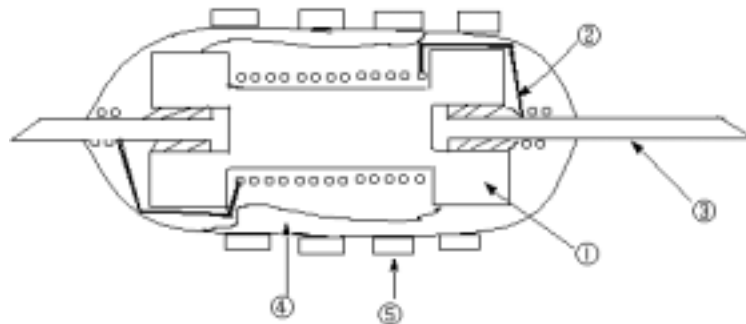


## EXTERNAL DIMENSIONS

Type	Body size (mm)					
	$\phi D \leq$	$L \leq$	t	$\Phi d$	$H \geq$	
0307	2.8	7.0	$t = 10.0 \pm 0.6$ $t = 12.5 \pm 0.6$	$0.50$ $\pm 0.05$	20	(Axial)

## STRUCTURE



NO.	① Core	② Wire	③ Lead	④ Coating	⑤ Color code
Material name	Ferrite	Enamelled wire	Tinned copper wire	Epoxy resin	Epoxy paint for Color coding

ELECTRICAL CHARACTERISTICS & TEST CONDITIONS

Type	Inductance (μH)	Tolerance	Q (min)	RDC (Ω) max	Test frequency (MHz)	SRF (MHz) min	Rated current I <sub>dc</sub> (mA) max
D A0000.22k0307	0.22	K : ±10%		0.40	25.2	150	400
D A0000.27k0307	0.27			0.43			380
D A0000.33k0307	0.33			0.48			370
D A0000.39k0307	0.39			0.51			350
D A0000.47k0307	0.47			0.56			330
D A0000.56k0307	0.56		0.61	320			
D A0000.68k0307	0.68		0.67	310			
D A0000.82k0307	0.82		0.74	290			
D A0001.00k0307	1.0		0.80	270			
D A0001.20k0307	1.2		0.90	260			
D A0001.50k0307	1.5		1.0	250			
D A0001.80k0307	1.8		1.1	240			
D A0002.20k0307	2.2		1.2	230			
D A0002.70k0307	2.7		1.3	220			
D A0003.30k0307	3.3		1.4	210			
D A0003.90k0307	3.9		1.6	200			
D A0004.70k0307	4.7		1.7	190			
D A0005.60k0307	5.6		1.9	180			
D A0006.80k0307	6.8		2.0	175			
D A0008.20k0307	8.2		2.2	165			
D A0010.00k0307	10		2.5	160			
D A0012.00k0307	12		2.5	150			
D A0015.00k0307	15		2.8	145			
D A0018.00k0307	18		3.1	140			
D A0022.00k0307	22		3.4	130			
D A0027.00k0307	27		3.8	125			
D A0033.00k0307	33		4.1	120			
D A0039.00k0307	39		4.5	115			
D A0047.00k0307	47		4.9	110			
D A0056.00k0307	56		5.3	105			
D A0068.00k0307	68		5.8	100			
D A0082.00k0307	82		6.3	95			
D A0100.00k0307	100		7.0	90			
D A0120.00k0307	120		13.0	90			
D A0150.00k0307	150		15.0	85			
D A0180.00k0307	180		16.0	80			
D A0220.00k0307	220		17.0	75			
D A0270.00k0307	270		19.0	65			
D A0330.00k0307	330		20.0	60			
D A0390.00k0307	390		22.0	55			
D A0470.00k0307	470	24.0	55				
D A0560.00k0307	560	26.0	50				
D A0680.00k0307	680	28.0	45				
D A0820.00k0307	820	30.0	40				
D A1000.00k0307	1000	33.0	40				
Test equipment	HP4285A (HP4286A, HP4287A)			HP4338B		HM9461	HP42841A
Ambient temperature	18~25°C						
Ambient humidity	45%~75%						

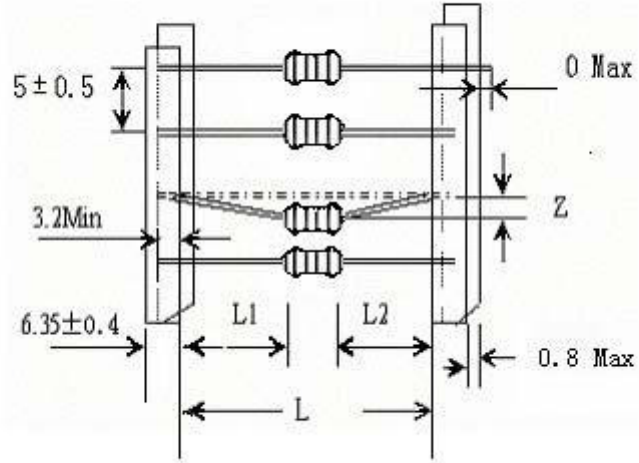
#

The products can be customized according to customer requirement.

## PACKAGING STYLE

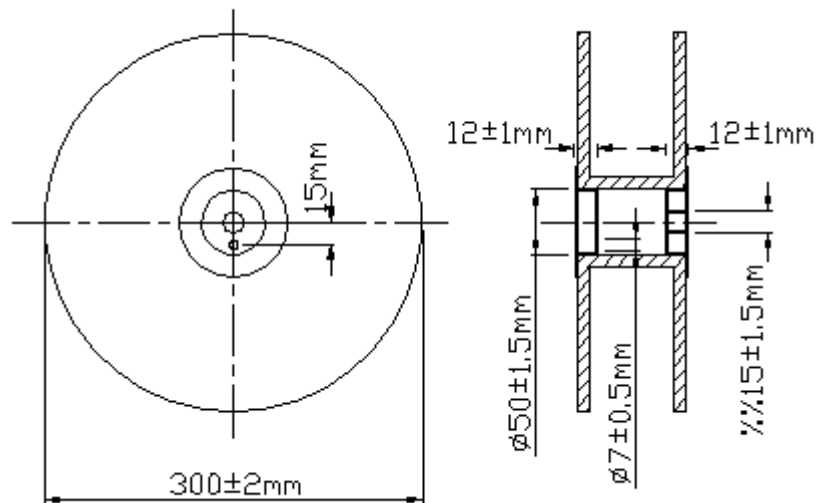
- Taping dimensions

Unit mm

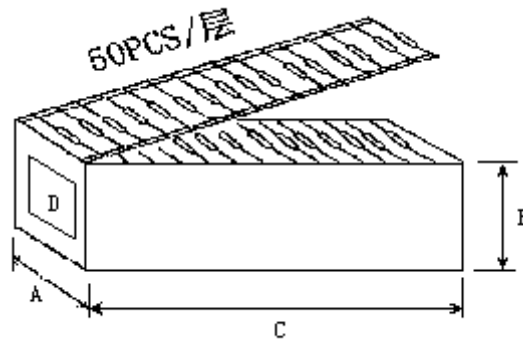


Tape style	L	Z	L1-L2
Tape width	$26 \pm 1.0$	$0.8 \text{ Max}$	$1.0 \text{ Max}$
Tape width	$52^{+2.0}_{-1.0}$	$1.2 \text{ Max}$	

- Tape & reel packaging dimensions



- **Ammo packaging dimensions**



- **Dimensions of box**

Unit mm

Tape type	Dimensions $\pm 5\text{mm}$		
	A	B	C
52	75	82	260
26	50	82	260

- **Packaging quantity**

Packaging style	Ammo	Tape & reel	Bulk
Quantity	2000	2000	1000

#

Packaging according to customer' s requirement